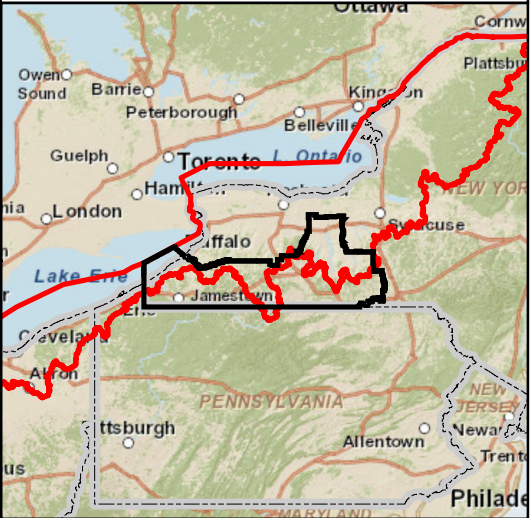


0 20 40 Miles



US Army Corps
of Engineers®
Buffalo District
BUILDING STRONG®



- 1, O&M, Barcelona Harbor
- 2, CG-CAP 14, Canadaway Creek
- 3, CG-GLFER, Chautauqua Creek
- 4, O&M, Dunkirk Harbor
- 5, CG-GLFER, Springville Dam
- 6, CG-CAP 205, Thatcher Brook



US Army Corps
of Engineers®
Buffalo District

FACT SHEET

February 2015

NORTHEAST (NE) HYDRILLA - New York

Section 104 of the River and Harbor Act of 1958
Aquatic Plant Control Research Program (APCRP)

Location

- The monoecious biotype of hydrilla (*Hydrilla verticillata*) was recently discovered in the Cayuga Lake Inlet, Ithaca, NY and Erie Canal, Tonawanda, NY

Project Description

- The Buffalo District and Engineer Research Development Center are providing technical support to state and local resource managers at both project locations
- The Corps is leading a demonstration project for control efforts at the Erie Canal site, about 13-miles, while local interests are leading the effort at Cayuga Lake
- Two US EPA registered herbicides, endothall and fluridone, are typically used to control hydrilla. Other control measures are either ineffective or not suitable for use in northern glacial water bodies

- Total cost of the technical support and herbicide application at the Erie Canal is \$500k annually. The demonstration project is scheduled for 5 years and costs will be reevaluated annually
- Assistance provided under the APCRP is 100% Federal

Importance

- This project will help protect the ecological and economic benefits that are derived from the Erie Canal system. The project will also help reduce the risk of hydrilla spreading to other water bodies in New York and the Great Lakes
- In the absence of hydrilla control measures, the highly invasive plant will crowd out native vegetation, diminish habitat available for fish and wildlife, and impede boating and recreational use of the waterway

Project Phase	Est. Fed. Cost of Phase	Federal Funding through FY14	FY15 Requirement	FY15 Budget	FY16 Requirement	FY16 Budget
Design & Implementation	\$2.5M	\$1,050k*	\$500k	\$0	\$500k	\$0

* \$197.5k Funded through the Great Lakes Restoration Initiative (GLRI) Program

Current Status

- Technical support is ongoing at both locations.
- The first herbicide application in the Erie Canal was completed the week of July 21, 2014. Plans for the 2015 herbicide application are being developed.
- Public outreach and education regarding the impact of hydrilla and the proposed treatment is ongoing.

Project Sponsor/Customer

- New York State Department of Conservation and New York State Canal Corporation.

Congressional Interests

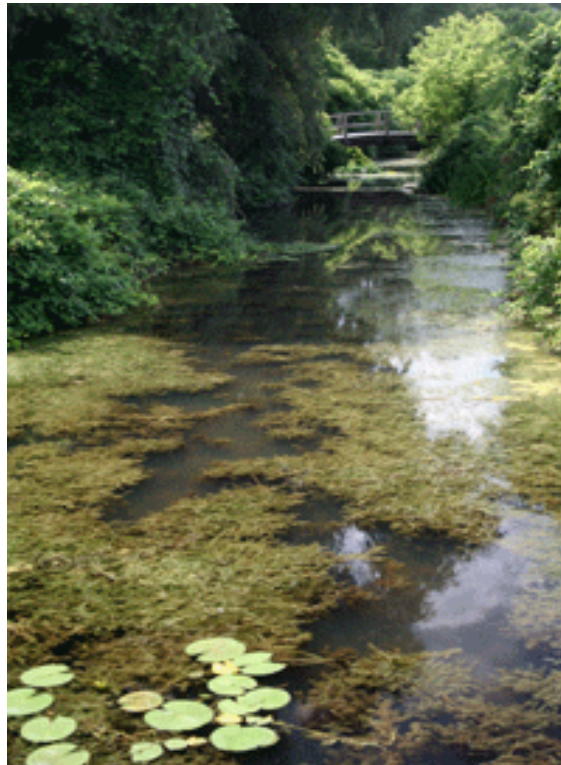
- Representative Tom Reed R-NY-23
- Senator Charles Schumer D-NY
- Senator Kirsten Gillibrand D-NY

Issues

- Eradication of invasive species is challenging especially if the species becomes established.
- The Aquatic Plant Control Research Program hasn't been in the President's Budget since 2011.



Hydrilla infestation at the Erie Canal, photo courtesy of Mike Netherland



Hydrilla infestation at Cayuga Lake Inlet, photo courtesy of Robert Johnson

Project Manager: Michael Greer (716) 879-4229, michael.j.greer@usace.army.mil



US Army Corps
of Engineers®

Buffalo District



Great Lakes
Navigation System

Barcelona Harbor, NY

Harbor Features

- Located on Lake Erie in the Town of Westfield, Chautauqua County, New York
- Authorization: River & Harbor Act of 1945
- Shallow draft recreational harbor
- Authorized depths are 10 feet in the entrance channel and 8 feet in the harbor basin
- The harbor is protected by the East and West Breakwaters with a total length of 1,730 feet
- Other features include public transient slips and launching facilities
- Major stakeholders include the Town of Westfield, one private marina, commercial and charter fishing interests, a charter diving operation and the recreational boating community

Project Requirements

- The harbor typically requires dredging every five to ten years.
- Sandy supplemental funded dredging of approximately 71,000 CY of material from storm impacted harbor areas was completed in Summer 2014.
- Sections of the west breakwater are starting to deteriorate and require repairs.



Consequences of Not Maintaining the Project

- Potential safety issues for recreational boating community
- Potential functional loss of Harbor of Refuge
- Negative economic impacts, locally and regionally

Transportation Importance

- Harbor of Refuge
- Supports 9 charter fishing boats generating approximately \$73,500 in net income annually. Also supports 2 licensed commercial fishing boats and a chartered diving operation

**U.S. Army Corps of Engineers Fiscal Year (FY) 2014, 2015 and 2016
Barcelona Harbor, New York - Project Requirements and President's Budget (\$1,000)**

Work Package	FY14 Requirement	FY14 Appropriation	FY15 Requirement	FY15 Appropriation	FY16 Requirement	FY16 President's Budget
Maintenance Dredging – Primary	250					
E&D/Constr. West Breakwater Repair					500	
Sandy Supplemental Maintenance Dredging	499*	499*				
TOTALS	749	499	0	0	500	0

*Funds allocated through Public Law 113-2 Disaster Relief Appropriations Act, 2013

Congressional Interests

- Representative Tom Reed R-NY-23
- Senator Kirsten Gillibrand D-NY
- Senator Charles Schumer D-NY



US Army Corps
of Engineers®
Buffalo District

FACT SHEET

February 2015

CANADAWAY CREEK SEWERLINE - FREDONIA, NY **Emergency Streambank Erosion Protection for Public Facilities** Section 14 of the Flood Control Act of 1946, as amended Construction General (Continuing Authorities Program)

Location

- Approximately 5,000 feet upstream from the confluence of Canadaway Creek and Lake Erie in the Village of Fredonia, Chautauqua County, NY

Project Description

- Continually eroding stream bank created risk of having raw sewage flowing into the creek and, eventually, Lake Erie; situation is at a critical stage
- Implemented construction: a trench-fill revetment, approximately 800' of the stream's left bank and parallel to the main sewer line
- Feasibility phase is cost-shared 65% Federal and 35% non-Federal
- Design and Implementation is cost-shared 65% Federal and 35% non-Federal

Importance

- Stream bank has eroded more than 100 feet in 50 years
- Integrity of the sanitary sewer line was in jeopardy

Consequences

- Continued erosion of this portion of Canadaway Creek threatened the village of Fredonia's main sewer trunk line to failure and will compromise the stability of the maintenance access road to the sewer line
- If the sewer would fail, raw sewage would flow directly into Canadaway Creek, and subsequently, into Lake Erie

Project Phase	Est. Fed. Cost of Phase	Federal Funding through FY14	FY15 Requirement	FY15 Budget	FY16 Requirement	FY16 Budget
Feasibility ¹ (Complete)	\$309k	\$309k	\$0	\$0	\$0	\$0
Design & Implementation	\$611k	\$115k	\$200k	\$0	\$200k	\$0
TOTAL	\$920k	\$424k	\$200k	\$0	\$200k	\$0

(1) First \$40k is at 100% Federal expense

Project Sponsor/Customer

- The village of Fredonia, NY is both the sponsor and the customer
- Letter from the Mayor to Representative Higgins – February 13, 2006

Congressional Interests

- Representative Tom Reed R-NY-23
- Senator Charles Schumer D-NY
- Senator Kirsten Gillibrand D-NY

Current Status

- The construction contract was awarded July 31, 2014 and the Notice to Proceed was issued August 20, 2014.
- Construction was substantially completed November 14, 2014. Final



restoration and hydroseeding will be completed in the spring of 2015.

Issues

- none

Ground was broken on the Canadaway Creek Sewer Line Protection Project, Dunkirk, NY, August 12, 2014. (Left to Right: U.S. Army Corps of Engineers, Buffalo District Commander LTC Karl Jansen, Congressmen Reed's representative Jacquelyn Chiarot, Village of Fredonia Mayor Steve Keefe, and State Assemblyman Andrew Goodell)



Project Manager: Casimir Brzozowiec (716) 879-4232, Casimir.Brzozowiec@USACE.Army.mil

Cattaraugus Creek Harbor, NY

Harbor Features

- Located on Lake Erie at the mouth of Cattaraugus Creek, Cattaraugus County, New York
- Authorization: River & Harbor Act of 1968
- Shallow draft recreational harbor
- Authorized depths are 8 feet in the entrance channel and 6 feet in the Cattaraugus Creek channel
- The harbor is protected by the North and South Breakwaters with a total length of 2,450 feet
- Construction of the project provided flood control benefits to the local community by removing shoals at the mouth of the creek and thereby reducing the threat of annual ice jam flooding
- Maintenance for this project is cost-shared 59% Federal and 41% local cost-share partner. The local cost-share partner is the New York State Office of Parks, Recreation and Historic Preservation (NYSPRHP)
- Major stakeholders include New York State Department of Environmental Conservation (NYSDEC), NYSPRHP, the Seneca Nation, private marinas, charter fishing interests and the recreational boating community

Project Requirements

- Maintenance dredging is required very infrequently. The project has not been dredged since construction in 1983
- Sections of the south and west breakwaters are starting to deteriorate and require repairs.



Consequences of Not Maintaining the Project

- Potential safety issues for recreational boating community
- Potential functional loss of Harbor of Refuge
- Negative economic impacts, locally and regionally

Transportation Importance

- Harbor of Refuge
- Supports 11 charter fishing boats generating approximately \$90,000 in net income annually

**U.S. Army Corps of Engineers Fiscal Year (FY) 2014, 2015 and 2016
Cattaraugus Creek Harbor, New York - Project Requirements and President's Budget (\$1,000)**

Work Package	FY14 Requirement	FY14 Appropriation	FY15 Requirement	FY15 Appropriation	FY16 Requirement	FY16 President's Budget
E&D, South and West Breakwater Repair			205		205	
Maintenance Dredging (Incl Sediment Sampling & Analysis)			590			
TOTALS	0	0	795	0	205	0

Congressional Interests

- Representative Chris Collins R-NY-27
- Representative Tom Reed R-NY-23
- Senator Kirsten Gillibrand D-NY
- Senator Charles Schumer D-NY



US Army Corps
of Engineers®
Buffalo District



Dunkirk Harbor, NY

Harbor Features

- Located on Lake Erie in the city of Dunkirk, Chautauqua County, New York
- Authorization: River & Harbor Acts of 1827, 1867, 1896, 1910, 1948 and Section 201 of the Flood Control Act of 1965
- Deep draft harbor
- Authorized depths are 17 feet in the outer channel, 16 feet in the inner channel, 8 feet in the access channel and 6 feet in the dock front recreation channels
- Over 1.3 miles of breakwater structures
- The outer, inner, access, and dock front Federal channels total approximately 7,000 feet in length
- Major stakeholders include the NRG Energy power plant, City of Dunkirk, private marinas, charter fishing interests and the recreational boating community

Project Requirements

- Approximately 20,000 cubic yards (CY) of material must be dredged every 2 years to maintain a functional channel. The harbor was last dredged in 2009 when approximately 106,000 CY of material was removed.
- Maintenance dredging is required to restore the channel to the authorized depth.
- Deteriorated sections of the North Breakwater require repair to restore proper function of the structure



Consequences of Not Maintaining the Project

- Potential safety issues for recreational boating community
- Potential functional loss of Harbor of Refuge
- Negative economic impacts, locally and regionally

Transportation Importance

- Formerly active commercial harbor receiving coal for waterfront power plant; coal shipments ceased in 2005
- Harbor of refuge
- Supports 24 charter fishing boats generating approximately \$196,000 in net income annually

**U.S. Army Corps of Engineers Fiscal Year (FY) 2014, 2015 and 2016
Dunkirk Harbor, New York - Project Requirements and President's Budget (\$1,000)**

Work Package	FY14 Requirement	FY14 Appropriation	FY15 Requirement	FY15 Appropriation	FY16 Requirement	FY16 President's Budget
Maintenance Dredging – Primary	650		650		1,190	
Structure Repair – N. Breakwater (F/P)	800					
E&D North Breakwater Repair			250			
Project Condition Surveys	85					
TOTALS	1,535	0	900	0	1,190	0

Congressional Interests

- Representative Tom Reed R-NY-23
- Senator Charles Schumer D-NY
- Senator Kirsten Gillibrand D-NY



**US Army Corps
of Engineers®**
Buffalo District

FACT SHEET

February 2015

Special Studies - Naples, Ontario County, NY

Section 206 of the 1960 Flood Control Act, as amended
General Investigations

Location

- The village of Naples is located in Ontario County near the mouth of Canandaigua Lake

Project Description

- A Special Study will create a hydrologic and hydraulic model for Grimes, Eelpot and Naples
- The study will determine the 1% and .2% chance of exceedance (100 and 500-year flood plain) in the area

Importance

- Updated flood plain information will assist local officials in zoning and flood plain management in the village

Consequences

- Without an updated study the village will not have accurate and current flood plain information

Project Phase*	Estimated Federal Cost	Federal Funding Thru FY14	FY15 Requirement	FY15 Budget	FY16 Requirement	FY16 Budget
Special Study – Naples, Ontario County, NY	\$220k	\$4.5k	\$75k	\$.4k	\$75k	\$0

*Special Studies are 100% Federally financed

Project Sponsor/Customer

- New York State

Congressional Interests

- Representative Tom Reed R-NY-23
- Representative John Katko R-NY-24
- Senator Charles Schumer D-NY
- Senator Kirsten Gillibrand D-NY

Current Status

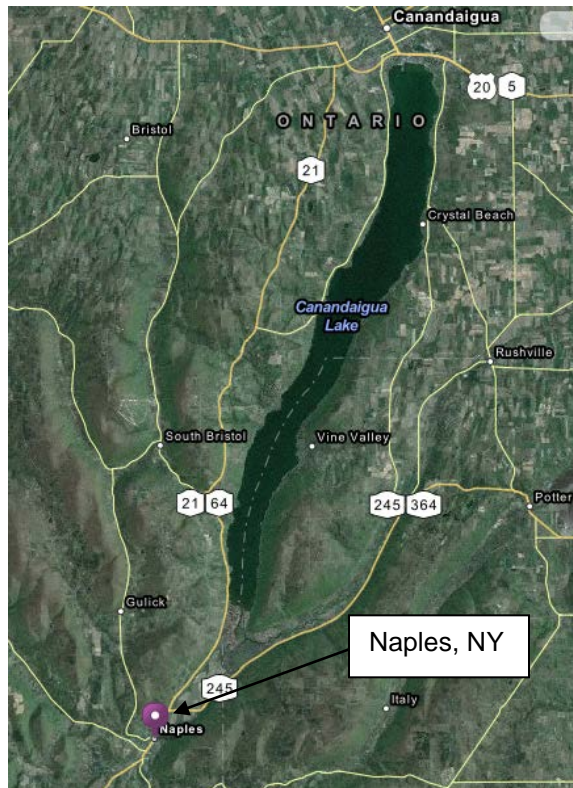
- Prioritization of water bodies needing updated studies was coordinated with Federal Emergency Management Agency

(FEMA), US Geological Survey (USGS) and the New York State Department of Environmental Conservation (NYSDEC)

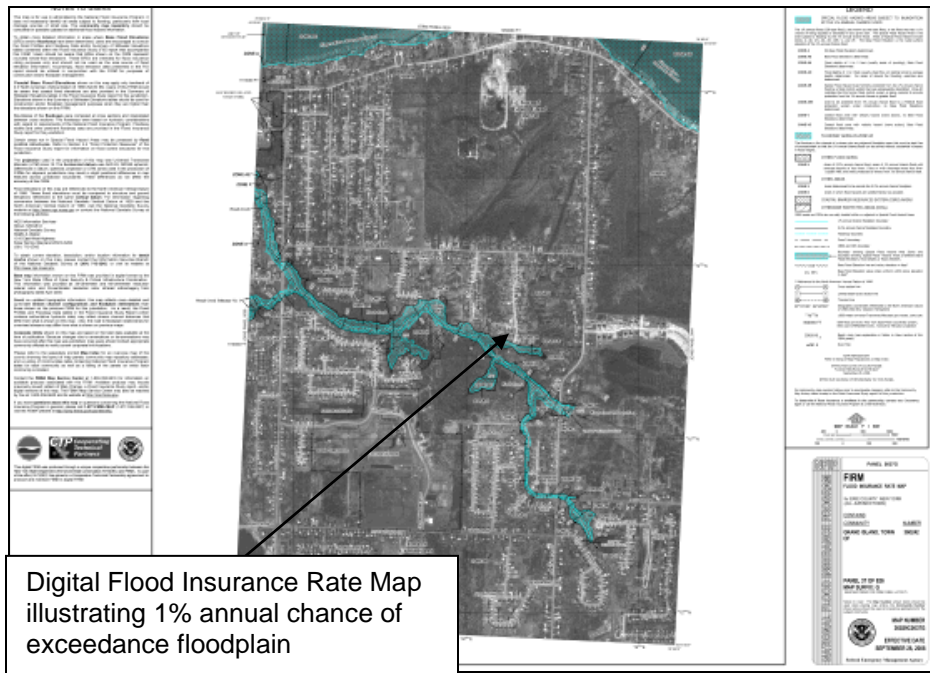
- Resource agencies are providing available background data
- The completed reports and technical studies will be provided to FEMA as an application for a Letter of Map Revision

Issues

- Funding restrictions have impacted progress on studies



Naples, Ontario County, NY Location Map
Source: mapquest.net



Project Manager: Laura V. Ortiz (716) 879-4407, laura.v.ortiz@usace.army.mil



**US Army Corps
of Engineers®**
Buffalo District

FACT SHEET

February 2015

Special Studies – New York

Section 206 of the 1960 Flood Control Act, as amended
General Investigations

Location

- Streams and rivers of NY, located within the Buffalo District boundaries

Project Description

- A Special Study will create a hydrologic and hydraulic model for portions of identified creeks and streams
- The study will determine the 1% and .2% chance of exceedence (100 and 500-year flood plain) in the area

Importance

- Updated flood plain information will assist local officials in zoning and flood plain management in the community

Consequences

- Without an updated study the communities will not have accurate and current flood plain information

Project Phase*	Estimated Federal Cost	Federal Funding Thru FY14	FY15 Requirement	FY15 Budget	FY16 Requirement	FY16 Budget
Special Study – Silver Creek, NY	\$320k	\$3.7k	\$75k	\$.4k	\$315k	\$0
Special Study- Finger Lakes	\$250k	\$4.5k	\$50k	\$.7k	\$245k	\$0
Special Study - Naples, NY	\$220k	\$4.5k	\$75k	\$.4k	\$215k	\$0
Special Study- St. Lawrence County	\$250k	\$5.5k	\$125k	\$.4k	\$245k	\$0
Special Study – Jefferson County	\$250k	\$3.8k	\$80k	\$.3k	\$245k	\$0

*Special Studies are 100% Federally financed

Project Sponsor/Customer

- New York State

Congressional Interests

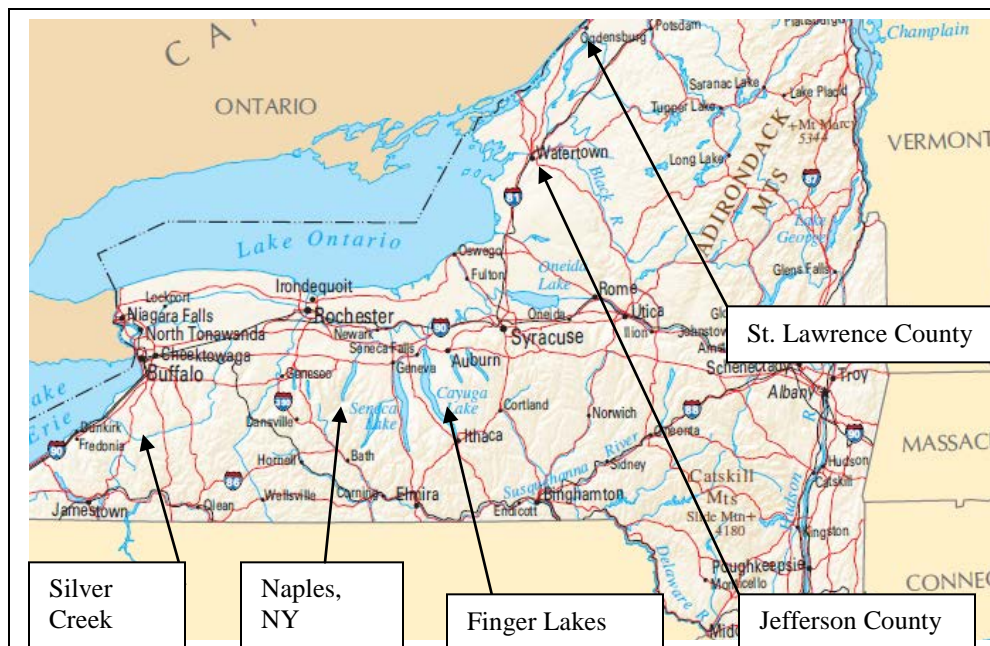
- Representative Elsie Stefanik R-NY-21
- Representative Richard Hanna R-NY-22
- Representative Tom Reed R-NY-23
- Representative John Katko R-NY-24
- Representative Brian Higgins D-NY-26
- Representative Chris Collins R-NY-27
- Senator Charles Schumer D-NY
- Senator Kirsten Gillibrand D-NY

Current Status

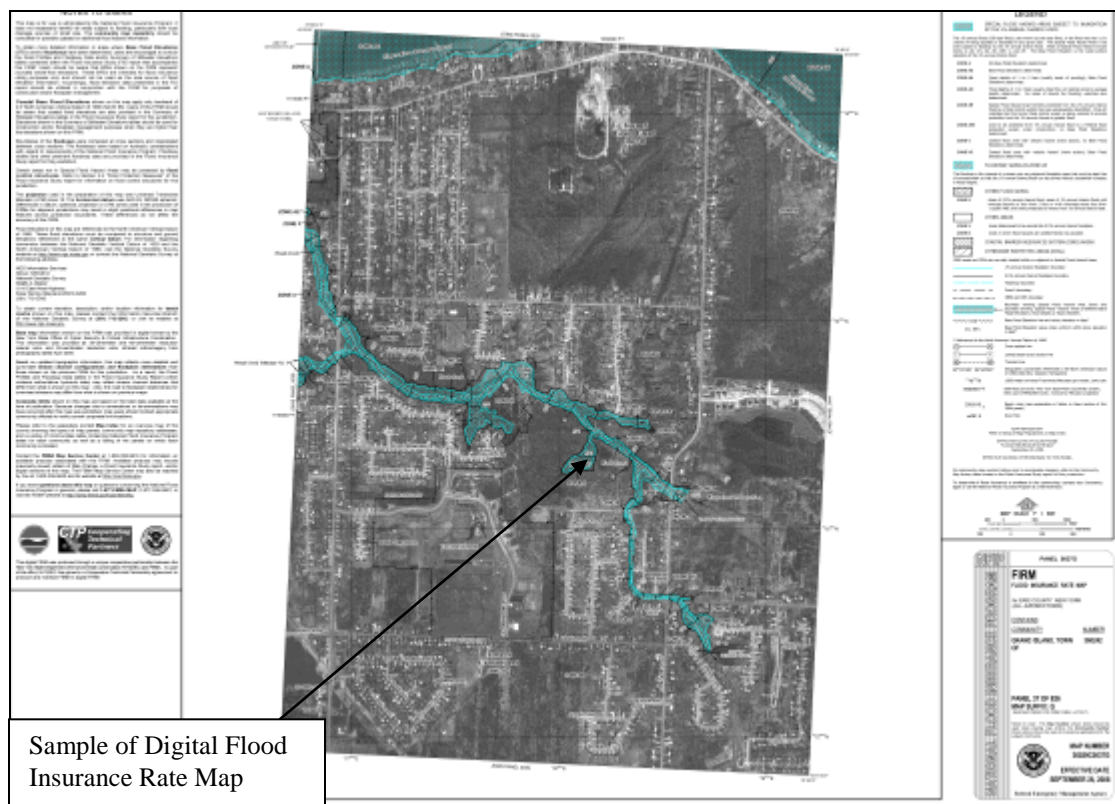
- Limited funding was provided to initiate the studies. Progress will be made based on the availability of funding

Issues

- Limited funding in the Flood Plain Management Program has been insufficient to continue new projects
- Prioritization will occur for unmapped or water bodies in need of updating for each of the studies



Source: Nationalatlas.gov



Project Manager: Laura V. Ortiz (716) 879-4407, laura.v.ortiz@usace.army.mil



US Army Corps
of Engineers®
Buffalo District

FACT SHEET

February 2015

Flood Plain Management Study – Finger Lakes, NY

Section 206 of the 1960 Flood Control Act, as amended
General Investigations

Location

- The Finger Lakes are located within the central portion of NY

Project Description

- A Flood Plain Management Study will create a hydrologic and hydraulic model for several communities located in the Finger Lakes area
- The study will determine the 1% and .2% chance of exceedance (100 and 500-year flood plain) in the area

Importance

- Updated flood plain information will assist local officials in zoning and flood plain management in the village

Consequences

- Without an updated study communities in the Finger Lakes will not have accurate and current flood plain information

Project Phase*	Estimated Federal Cost	Federal Funding Thru FY14	FY15 Requirement	FY15 Budget	FY16 Requirement	FY16 Budget
FPMS –Finger Lakes, NY	\$500k	\$4.5k	\$50k	\$.0k	\$245k	\$0

*FPMS Studies are 100% Federally financed

Project Sponsor/Customer

- New York State

Congressional Interests

- Representative Tom Reed R-NY-23
- Representative John Katko R-NY-24
- Senator Charles Schumer D-NY
- Senator Kirsten Gillibrand D-NY

Current Status

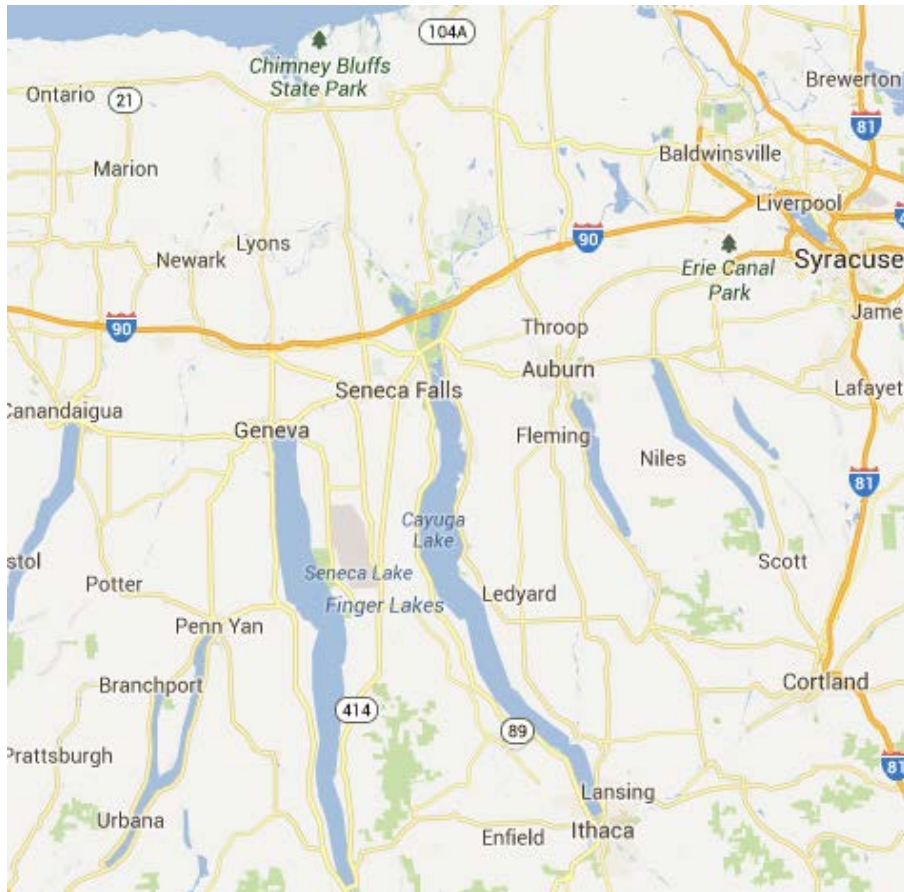
- Prioritization of water bodies needing updated studies was coordinated with Federal Emergency Management

Agency (FEMA), US Geological Survey (USGS) and the New York State Department of Environmental Conservation (NYSDEC)

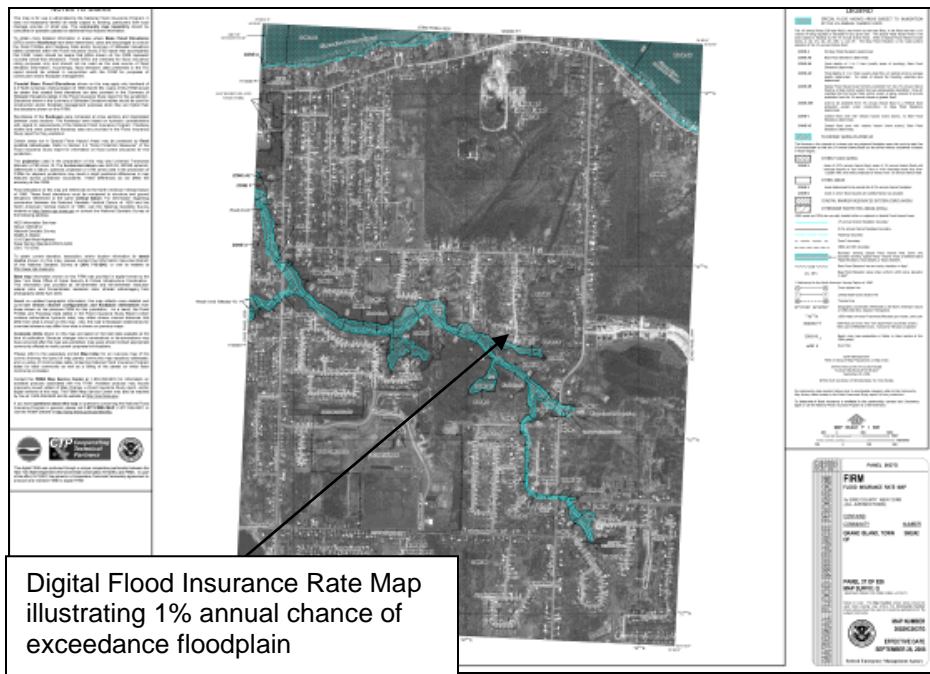
- Resource agencies are providing available background data
- The completed reports and technical studies will be provided to FEMA as an application for a Letter of Map Revision

Issues

- Funding limitations have restricted progress on the study



Finger Lakes, NY Location Map
Source: fingerlakes1.com



Project Manager: Laura V. Ortiz (716) 879-4407, laura.v.ortiz@usace.army.mil



US Army Corps
of Engineers®
Buffalo District

FACT SHEET

February 2015

Genesee River Comprehensive Watershed Study, NY

Section 729 of the Water Resources Development Act (WRDA) of 1986, as amended
General Investigations

Location

- The Genesee River watershed originates in Potter County in northern PA, running north through west central NY to its mouth at Lake Ontario in Rochester, NY

Project Description

- The purpose of the comprehensive watershed study is to develop a multi-agency strategic plan for recommending and implementing measures that will restore the beneficial uses of the Genesee River. The strategic plan will place emphasis on collaboration and consensus building with all relevant Federal, state, and local stakeholders to maximize implementation of actions identified in the Genesee River Basin Action Strategy, the Rochester Embayment Remedial Action Plan and the Lake Ontario Management Plan
- The Genesee/Finger Lakes Regional Planning Council brought together hundreds of stakeholders to develop the Genesee River Basin Action Strategy. This document specifically calls for the development of a management plan for the watershed

Importance

- Watershed restoration is most effective and efficient when projects are formulated, designed and implemented in accordance with a strategic plan
- The watershed management study will result in a strategic plan to guide sustainable development and environmental restoration in the watershed. The plan will recommend alternatives and measures to address (among others) comprehensive ecosystem restoration including habitat and wetland restoration, prevention of future environmental losses, reduction of bacterial loadings and pollutants of concern, improvements to navigation channels, flood risk management including assessment of the condition of floodwalls along the river within the city of Rochester, and improvement of combined sanitary sewers and home sewage disposal

Consequences

- Without the study the Genesee River watershed stakeholders will continue to work in the watershed on a project by project basis without the benefits of a strategic watershed plan to reference and use to guide further comprehensive and multipurpose planning and implementation of sustainable solutions to their complex water resource problems

Project Phase	Est. Fed. Cost of Phase	Federal Funding Thru FY14	FY15 Requirement	FY15 Budget	FY16 Requirement	FY16 Budget
Initial Watershed Assessment	\$100k	\$0	\$100k	\$0	\$100k	\$0

Project Sponsor/Customer

- The Genesee/Finger Lakes Regional Planning Council submitted a Letter of Intent dated September 15, 2004

Congressional Interests

- Representative Tom Reed R-NY-23
- Senator Charles Schumer D-NY
- Senator Kirsten Gillibrand D-NY

Current Status

- Until appropriations are provided, work cannot commence on this study

Issues

- No funding has been appropriated to this project



Project Manager: David A. Schulenberg (716) 879-4263, david.a.schulenberg@usace.army.mil



New York Shallow Draft Harbors

Appropriation Category: Operations and Maintenance (O&M)

Congressional Interests:

Representative Tom Reed R-NY-23

Representative Louise Slaughter D-NY-25

Representative Chris Collins R-NY-27

Senator Charles Schumer D-NY

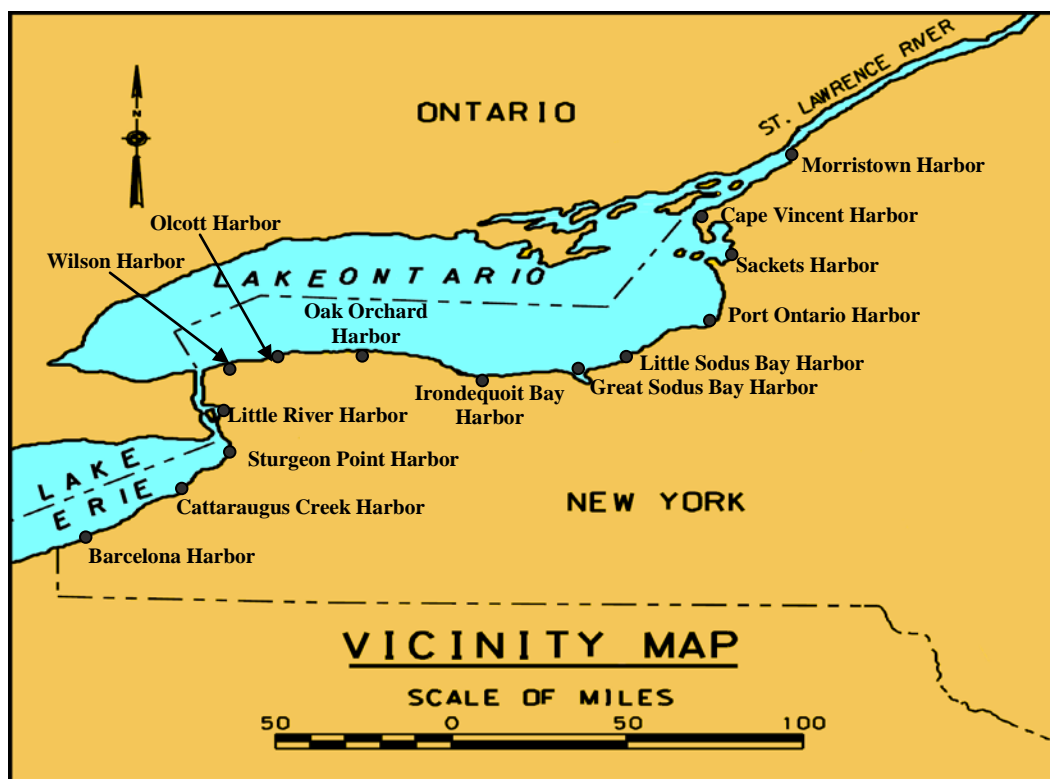
Senator Kirsten Gillibrand D-NY

Work Package	FY14 Requirement	FY14 Appropriation	FY15 Requirement	FY15 Appropriation	FY16 Requirement	FY16 President's Budget
Barcelona, West Breakwater Repair					500	
Barcelona, Dredging	250					
Cape Vincent Harbor, Sediment Sampling & Analysis**			170			
Cattaraugus Creek Harbor, Maintenance Dredging			590			
Cattaraugus Creek Harbor, E&D S&W Breakwater Repair			205		205	
Great Sodus Harbor, Dredging**	830				830	
Great Sodus Harbor, E. Breakwater Repair**	250		250		250	
Irondequoit Bay, Dredging	350	350				
Little River Harbor, Dredging					700	
Little Sodus Harbor, Dredging**	600					
Little Sodus E&D/Const W. Pier Repair**	250		250		250	
Oak Orchard, Dredging	100					
Ogdensburg, Sediment Sampling & Analysis			70		70	
Olcott, Dredging	790					
Port Ontario, E&D, Construction Sand Bypass	1,300				1,300	
Port Ontario, Sediment Sampling and Analysis			70			
Sturgeon Point, Annual Sand Bypass***	20				20	
Wilson, E&D/Constr. West Pier Repair					300	
Wilson, Dredging	300		785		725	
TOTALS	5,040	350	2,390	0	5,150	0

- ** These harbors were authorized as deep draft commercial harbors but are currently maintained as shallow draft recreational harbors.
- *** This project was Federally constructed and is locally operated and maintained.

Current Condition: The New York shallow draft harbors are in serious need of maintenance dredging, navigation structure repair or sand bypassing. Funding for recreational “low-use” harbors is a low priority in the budgetary process. Lack of maintenance at these harbors will lead to increased shoaling, structure deterioration and sand accretion; resulting in limited usage and/or unsafe navigation conditions within the harbor and navigation channels and potential shoreline erosion.

Background: Shallow draft harbors within NY include: Barcelona, Cape Vincent, Cattaraugus Creek, Irondequoit, Little River, Morristown, Oak Orchard, Olcott, Port Ontario, Sackets, Sturgeon Point and Wilson. Shallow draft harbors are utilized for recreational purposes, with no defined commercial traffic. These projects generally consist of a shallow channel (4–14 feet deep), and relatively small system of breakwaters and/or piers.



Significance: The NY shallow draft harbors help to support the regional economy by providing an additional source of revenue, jobs and income to the area. The harbors support recreational interests and numerous regionally significant businesses interests. Major business interests include marinas, charter fishing, tourism, gasoline and marine product sales. In addition, most of the harbors serve as designated harbors of refuge; with the purpose of providing refuge to water crafts during severe lake storms.



US Army Corps
of Engineers®
Buffalo District

FACT SHEET

February 2015

Oswego River Watershed Assessment, NY

Section 729 of the Water Resources Development Act (WRDA) of 1986, as amended
General Investigations

Location

- The Oswego River is located in central NY and covers over 5,000 square miles, including the Finger Lakes

Project Description

- The study would involve a comprehensive investigation of the Oswego River watershed and the New York State Barge Canal, aimed at evaluating water level management and its effects on water resources including water supply, hydropower, fish and wildlife habitat, navigation, flood damage reduction, recreation, and water quality
- A Final Watershed Assessment would be cost-shared 75% Federal and 25% non-Federal

Importance

- The watershed study will result in a strategic plan to guide sustainable water resource management in the watershed. The plan will evaluate alternatives and measures to address basin-wide water management for the purpose of restoring aquatic ecosystems while balancing the needs for flood risk management, navigation, and the other uses of the water resource

Consequences

- Without the assessment, water level management in Oswego River Basin will continue to be difficult and unpredictable
- Operators will continue to manage water levels on a lake by lake basis without knowing how decisions will affect conditions in the entire watershed

Project Phase	Est. Fed. Cost of Phase	Federal Funding Thru FY14	FY15 Requirement	FY15 Budget	FY16 Requirement	FY16 Budget
Initial Watershed Assessment (COMPLETE)	\$92k	\$92k*	\$0	\$0	\$0	\$0
Final Watershed Assessment	\$1,000k	\$115k*	\$100k	\$0	\$200k	\$0

* Funded through the Great Lakes Restoration Initiative Program

Project Sponsor/Customer

- The New York State Thruway Authority/ Canal Corporation
- Finger Lakes Regional Watershed Alliance
- Finger Lakes Institute
- Central New York Waterways

Congressional Interests

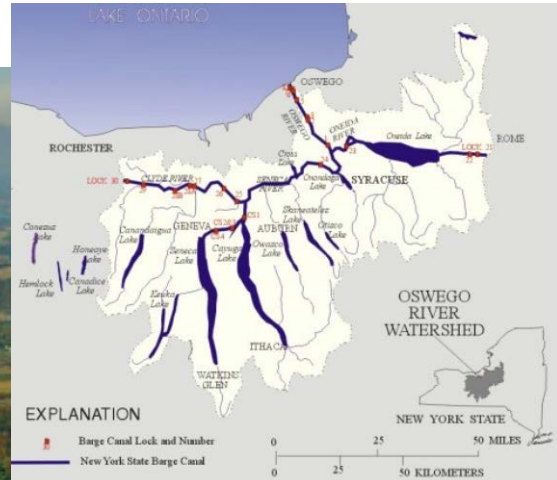
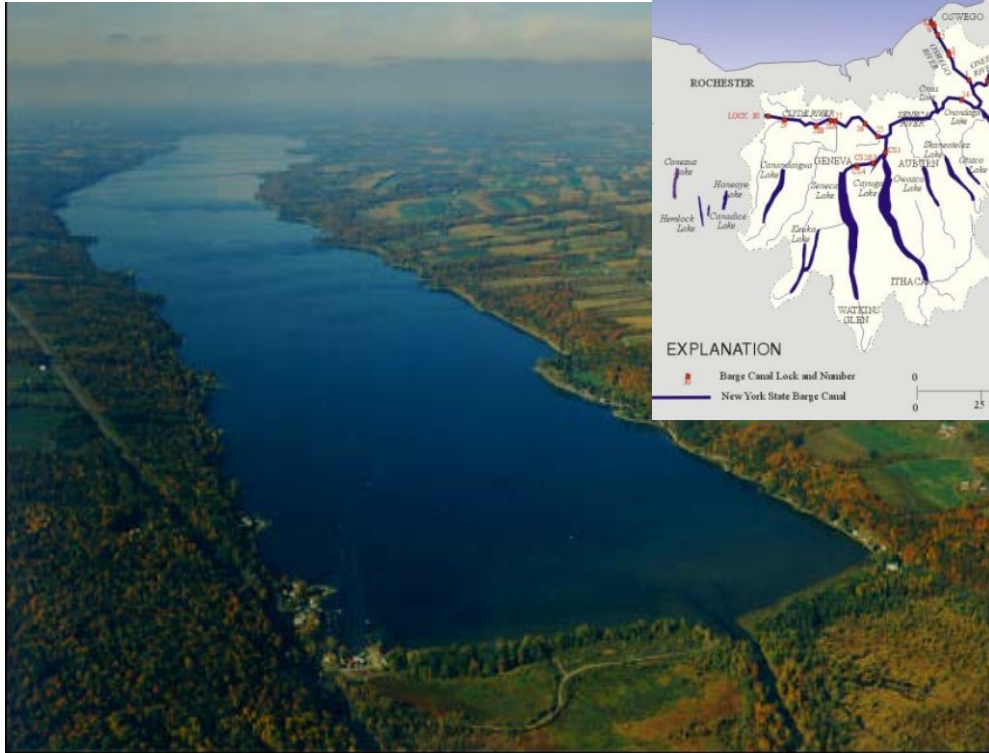
- Representative Richard Hanna R-NY-22
- Representative Tom Reed R-NY-23
- Representative John Katko R-NY-24
- Representative Louise Slaughter D-NY-25
- Senator Kirsten Gillibrand D-NY
- Senator Charles Schumer D-N

Current Status

- The Initial Watershed Assessment has been completed
- Currently on hold awaiting non-Federal sponsor

Issues

- Stakeholder capability to provide cost share uncertain



Project Manager: David A. Schulenberg (716) 879-4263, david.a.schulenberg@usace.army.mil



US Army Corps
of Engineers®
Buffalo District

FACT SHEET

February 2015

Oswego River Basin, NY Flood Forecasting New York State (NYS) Canal Corporation

Water Resources Development Act of 1999, Section 436
General Investigations

Location

- Central New York State, comprising over 5,000 square miles, including the Finger Lakes

Project Description

- In the December 2005 *Report on the Future of New York State Canals*, the NYS Canal Corporation discussed the need for “more coherent and comprehensive system of water management in the Basin” and recommended a “canal system-wide real-time monitoring system with the forecasting tools necessary to project flood estimates, allowing lake managers and the Canal Corporation to make decisions based upon an accurate assessment of basin-wide conditions

Importance

- The area has quite a number of water resource related issues. However, Flooding is a primary issue of the basin and affects numerous communities, businesses, and people. Flooding related issues would be a focus of this study

Consequences

- Without funding; evaluation of water related resource issues and needs will remain unknown

Project Phase	Est. Cost of Phase	Federal Funding Thru FY14	FY15 Requirement	FY15 Budget	FY16 Requirement	FY16 Budget
Feasibility	TBD	\$0	\$100k	\$0	\$150k	\$0

(1) PAS Studies are cost-shared 50% Federal, 50% non-Federal.

Project Sponsor/Customer

- New York State Canal Corporation (NYS Thruway Authority)

Congressional Interests

- Representative Louise Slaughter D-NY-25
- Representative John Katko R-NY-24
- Representative Chris Collins R-NY-27
- Representative Tom Reed R-NY-23
- Senator Kirsten Gillibrand D-NY
- Senator Charles Schumer D-NY

Current Status

- Not funded, not initiated

Issues

- No funding has been appropriated to this project recently



Project Manager David A. Schulenberg (716) 879-4263, david.a.schulenberg@usace.army.mil



FACT SHEET

February 2015

SPRINGVILLE DAM, SPRINGVILLE, NY

Section 506 of the Water Resources Development Act of 2000
Great Lakes Fisheries and Ecosystem Restoration (GLFER)
Construction General (CG)

Location

- The dam is located in the village of Springville, Erie County in western New York on the Cattaraugus Creek. It is approximately 30 miles south of Buffalo and is 34 miles upstream of the Lake Erie confluence. Cattaraugus Creek is the natural boundary separating Erie and Cattaraugus Counties.

Project Description

- Restore ecological connectivity of the upper Cattaraugus Creek watershed to the downstream areas of creek and Lake Erie.
- The preferred plan lowers the dam spillway and replaces it with a sea lamprey (invasive species) barrier and fish ramp. At the top of the ramp will be a stoplog weir, a jump pool and a

lamprey trap. The stoplogs will be removed during non-lamprey spawning season allowing unrestricted access.

Importance

- This project supports Lakewide Management Plan (LaMP) goals: Maintain/restore ecosystem to support self-reproducing diverse biological communities.
- The upper Cattaraugus Creek and its tributaries are all of higher quality than downstream of the dam with regards to water quality and spawning habitat.

Consequences

- Not restoring ecological connectivity will deny fish communities above and below the dam increased richness and abundance.

Project Phase	Est. Federal Cost of Phase	Federal Funding through FY14	FY15 Requirement	FY15 Budget	FY16 Requirement	FY16 Budget
Feasibility	\$997K	\$1,204K ¹	\$150K ¹	\$0	\$0	\$0
Design & Implementation ²	\$3,382K	\$0	\$100K	\$0	\$330K	\$0
TOTAL	\$4,379K³	\$1,204K	\$250K	\$0	\$330K	\$0

¹Most of these funds will be retroactively cost shared at the beginning of PED, after the PPA is completed.

²Includes PPA completion.

³Total project cost (Federal plus Non-Federal) is estimated to be \$6,600K.

Current Status

- The Detailed Project Report and Environmental Assessment is completed and being reviewed for final certification.
- A draft Project Partnership Agreement has been sent to the non-Federal sponsors for review and concurrence.
- Erie County has committed \$470K toward the Non-Federal cost share.

Project Sponsors

- New York State Department of Environmental Conservation through a letter of request in January 2014.
- Erie County through a letter of intent February 2014.

Congressional Interests

- Representative Tom Reed R-NY-23
- Representative Chris Collins R-NY-27
- Senator Charles Schumer D-NY
- Senator Kirsten Gillibrand D-NY

Issues

- Springville Dam does not meet current design safety standards. Any modification to the dam must include bringing the dam into compliance and involve Type 2 IEPR procedure.
- Limiting sea lamprey movements and reproduction should remain a critical consideration of this project.



Figure 1. Springville Dam - Looking upstream, before modification.



Figure 2. Springville Dam - Artist's rendering of completed fish passage ramp with sea lamprey barrier.

Project Manager: Geoffrey K. Hintz, (716) 879-4155, Geoffrey.K.Hintz@usace.army.mil



US Army Corps
of Engineers®
Buffalo District

FACT SHEET

February 2015

THATCHER BROOK, GOWANDA - NY

Small Flood Control Projects

Section 205 of the Flood Control Act of 1948, as amended
Construction General (Continuing Authorities Program)

Location

- In the village of Gowanda, Erie County, NY approximately 29 miles south of the City of Buffalo, NY

Project Description

- A Flood Risk Management study will identify measures to reduce the impacts of future flood events
- The initial phase of the Feasibility Study has determined a positive Federal interest
- A Feasibility Study will formulate and evaluate measures to reduce the future impacts of flooding
- Feasibility phase is cost-shared 50% Federal and 50% non-Federal
- Design and Implementation is cost-shared 65% Federal and 35% non-Federal

Importance

- Continual overbank flooding of Thatcher Brook causes damages to residences and commercial businesses in Gowanda
- Severe flooding in 1998 and 2006 led to previous requests for Section 205 assistance. Severe flooding in August 2009 resulted in a Federal disaster declaration and reaffirmed the need for a flood damage reduction project

Consequences

- If a project is not pursued, Gowanda will continue to incur financial damages and threats to life and safety resulting from flood events

Project Phase	Est. Fed. Cost of Phase	Federal Funding through FY14	FY15 Requirement	FY15 Budget	FY16 Requirement	FY16 Budget
Feasibility ¹	\$811.3k	\$100k	\$50k	\$0k	\$150k	\$0

(1) First \$100k is at 100% Federal expense.

Project Sponsor/Customer

- New York State Department of Environmental Conservation (NYSDEC) through a letter dated 31 October 2012
- The village of Gowanda, NY through a letter of request dated May 6, 2010

Congressional Interests

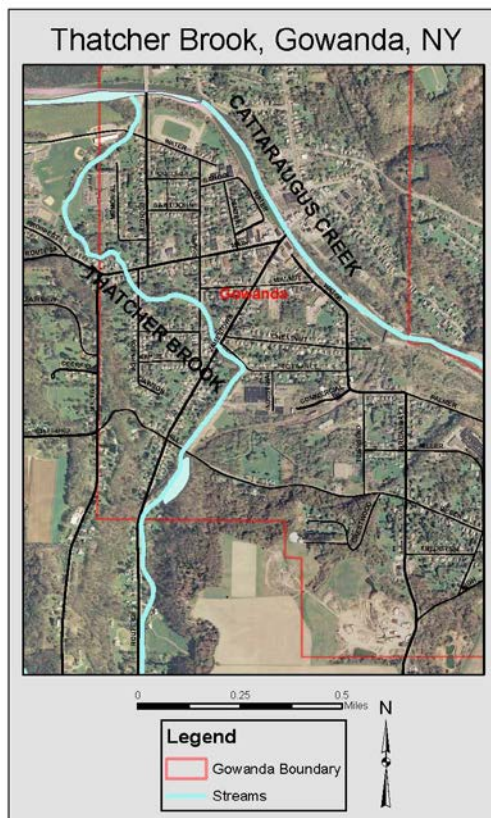
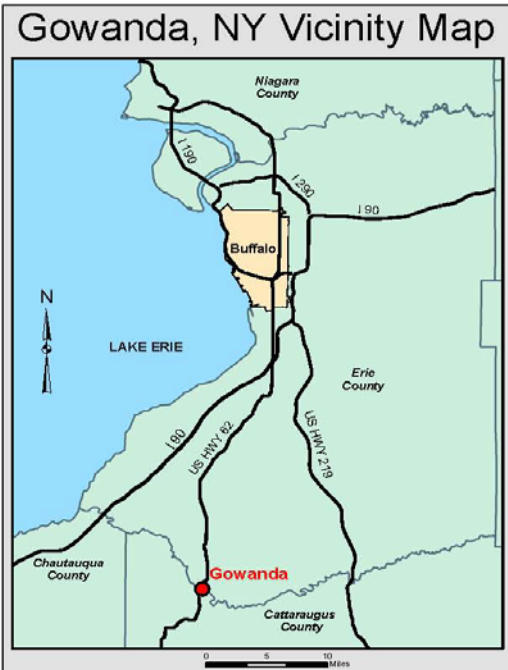
- Representative Tom Reed R-NY-23
- Representative Chris Collins R-NY-27
- Senator Kirsten Gillibrand D-NY
- Senator Charles Schumer D-NY

Current Status

- The Feasibility Cost Sharing Agreement was executed in March 2014 and the funding received in the District
- Study efforts began in October 2014

Issues

- None





US Army Corps
of Engineers®
Buffalo District

FACT SHEET

February 2015

WATER AND WASTEWATER IMPROVEMENTS - WELLSVILLE, NY

Section 219 of the 1992 Water Resources Development Act (WRDA), as Amended

WRDA 2007 Sec. 5158 (189)

Environmental Infrastructure Program

Location

- The Town of Wellsville, NY

Project Description

- Water supply, water, and wastewater infrastructure improvements for the Town of Wellsville
- Authorization - WRDA 2007 Sec. 5158 (189) - \$2,000,000 for water supply, water, and wastewater infrastructure, Wellsville, NY
- Design and/or Construction are cost-shared 75% Federal and 25% non-Federal

Importance

- Capital improvements will continue to serve the water needs of the Town of Wellsville, NY in accordance with all US Environmental Protection Agency and OH Environmental Protection Agency issued permits

Consequences

- System failure will occur without upgrade or replacement
- The risk of partially treated/untreated wastewater being discharged increases without improvements to the existing system

Project Phase	Est. Fed. Cost of Phase	Federal Funding through FY14	FY15 Requirement	FY15 Budget	FY16 Requirement	FY16 Budget
Design & Construction	\$2M	\$0	\$2M	\$0	\$2M	\$0

Project Sponsor/Customer

- Sponsor - To be determined
- Customer - Wellsville, NY

Congressional Interests

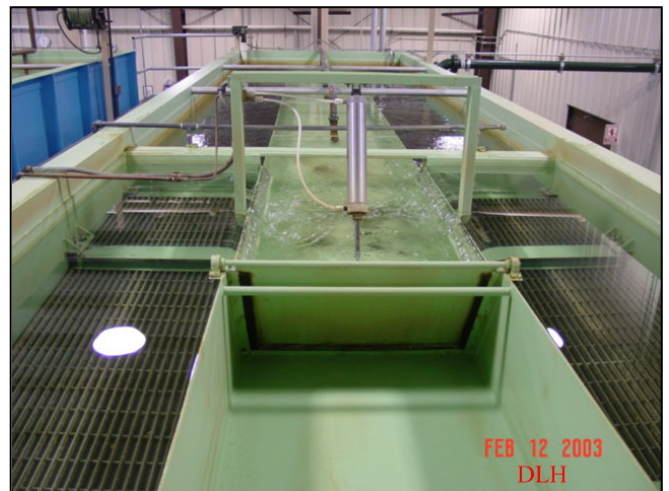
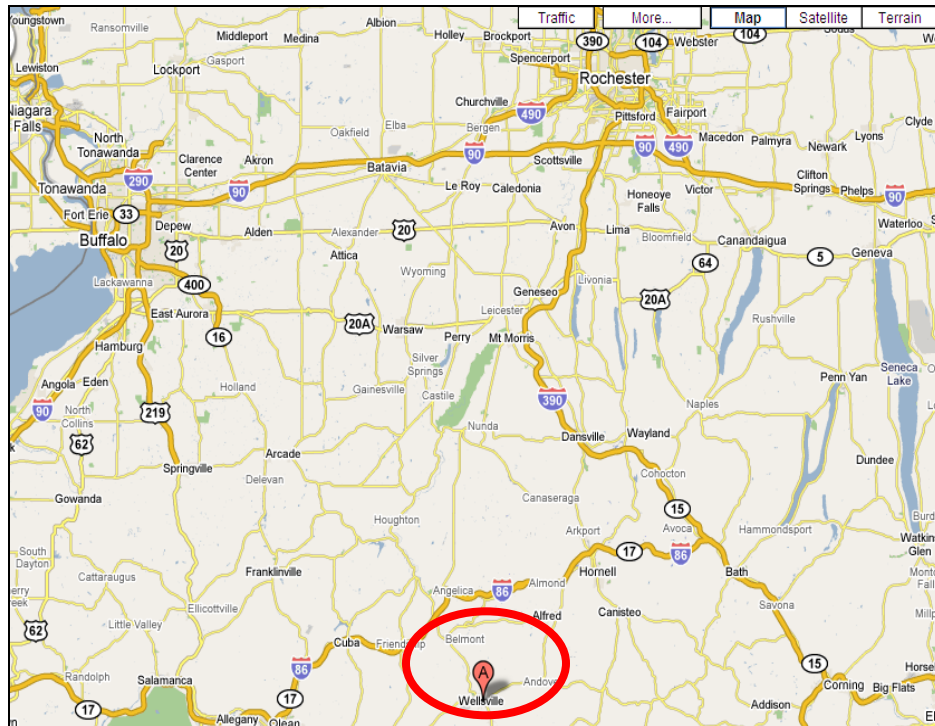
- Representative Tom Reed R-NY-23
- Senator Charles Schumer D-NY
- Senator Kirsten Gillibrand D-NY

Current Status

- Not funded, not initiated

Issues

- Project requires additional funding to move forward



Project Manager: Ron Kozlowski (716)879-4348, Ronald.J.Kozlowski@usace.army.mil