

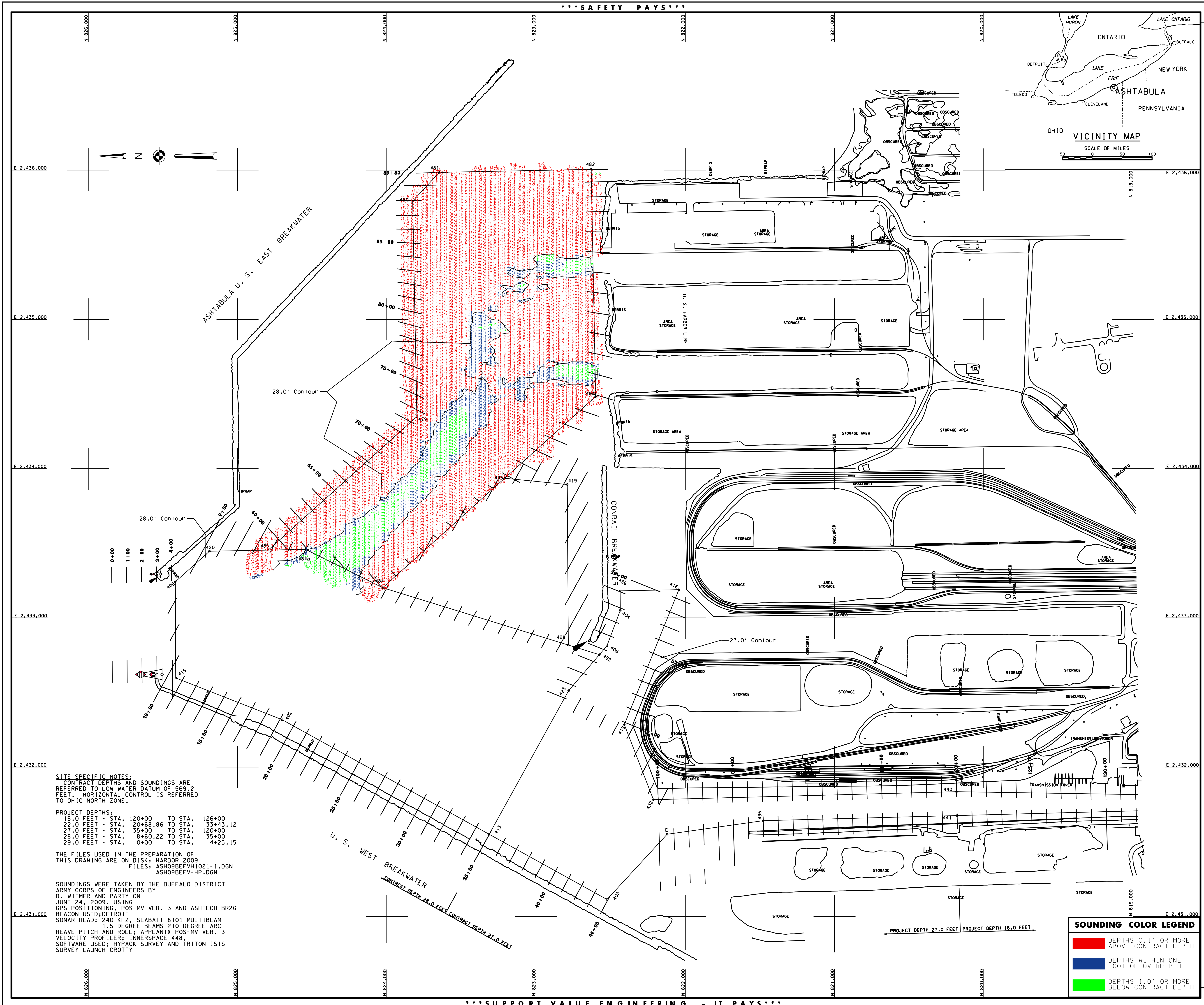
General Notes
The information depicted on this map represents the results of surveys made on the date indicated and can only be considered as indicating the general condition of the area. Unless otherwise noted on this map, all depths and soundings are in feet and referred to the International Great Lakes Datum 1985 (IGLD 1985) and all horizontal positions are referred to North American Datum 1983 (NAD83). See the Site Specific Notes for details on the survey methods used. This drawing was prepared using a CAD system. Scaling may be distorted.

Drawn by: CDD
Checked by:
Reviewed by:
Approved: Chief, Survey Unit
Date: CHIEF, NYPA Navigation and Maintenance Section

U.S. ARMY ENGINEER DISTRICT
CORPS OF ENGINEERS
BUFFALO, NEW YORK 14207-3199

ASHTABULA HARBOR, OHIO
FALL AFTER CONTRACT DREDGING
SOUNDINGS 2009
SCALE: 1" = 200'
50' 0" 100' 200'

Sheet reference number:
VH - 102
Sheet 1 of 1
095-ASH-21



SOUNDING COLOR LEGEND

[Red Box]	DEPTHS 0.1' OR MORE ABOVE CONTRACT DEPTH
[Blue Box]	DEPTHS WITHIN ONE FOOT OF OVERDEPTH
[Green Box]	DEPTHS 1.0' OR MORE BELOW CONTRACT DEPTH

SITE SPECIFIC NOTES:
CONTRACT DEPTHS AND SOUNDINGS ARE REFERRED TO LOW WATER DATUM OF 569.2 FEET. HORIZONTAL CONTROL IS REFERRED TO OHIO NORTH ZONE.

PROJECT DEPTHS:
18.0 FEET - STA. 120+00 TO STA. 126+00
22.0 FEET - STA. 20+68.86 TO STA. 33+43.12
27.0 FEET - STA. 35+00 TO STA. 120+00
28.0 FEET - STA. 8+60.22 TO STA. 35+00
29.0 FEET - STA. 0+00 TO STA. 4+25.15

THE FILES USED IN THE PREPARATION OF THIS DRAWING ARE ON DISK: HARBOR 2009
FILES: ASH09BEF-VH1021-1.DGN
ASH09BEF-V-HP.DGN

SOUNDINGS WERE TAKEN BY THE BUFFALO DISTRICT ARMY CORPS OF ENGINEERS BY D. WITMER AND PARTY ON JUNE 24, 2009, USING GPS POSITIONING, POS-MV VER. 3 AND ASHTECH BR2G BEACON USED; DETROIT SONAR HEAD: 240 KHZ, SEABATT 8101 MULTIBEAM 1.5 DEGREE BEAMS 210 DEGREE ARC HEAVE PITCH AND ROLL; APPLANIX POS-MV VER. 3 VELOCITY PROFILER; INNSPACE 448. SOFTWARE USED: HYPACK SURVEY AND TRITON 1S15 SURVEY LAUNCH CROTTY