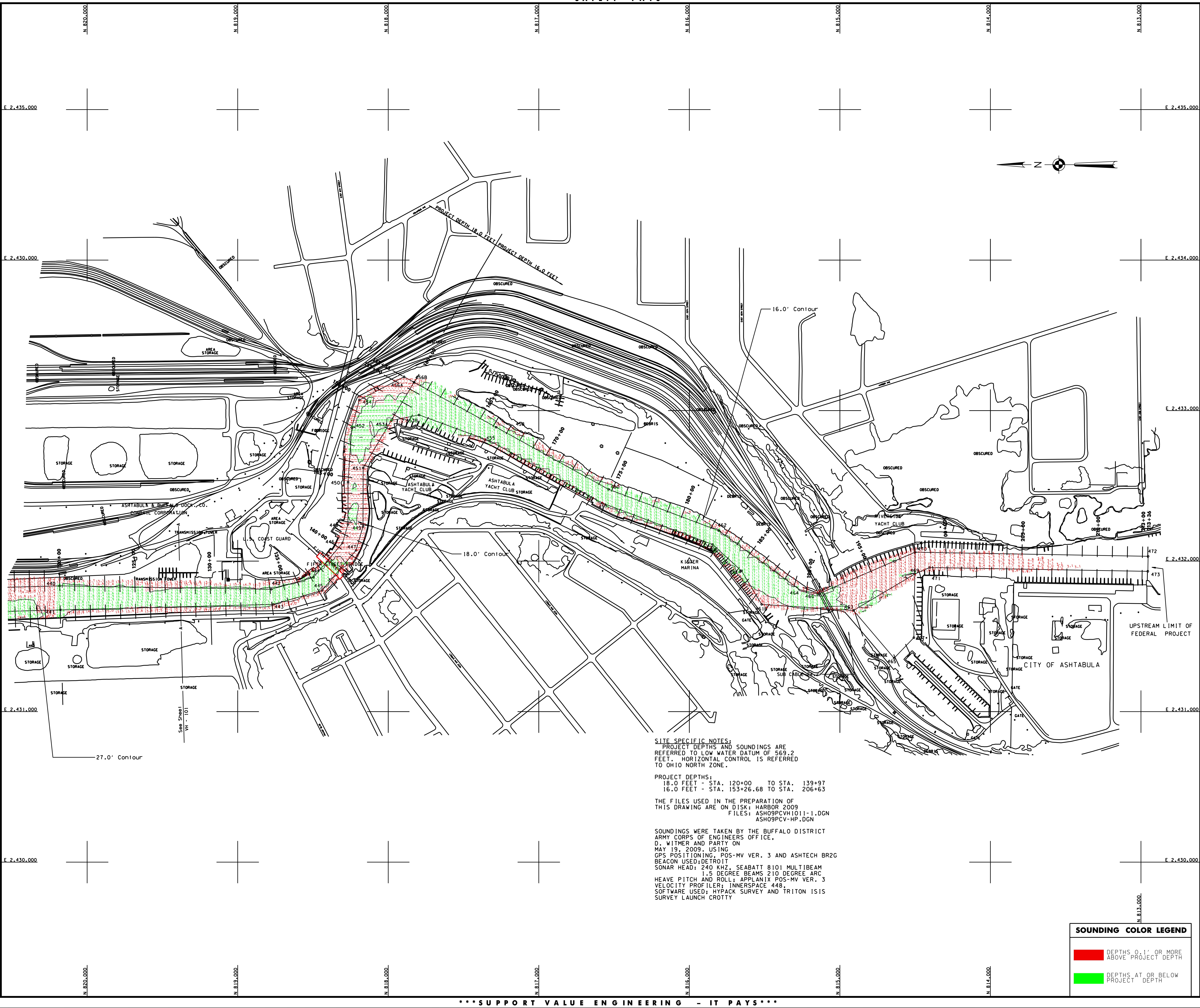


GENERAL NOTES:
The information depicted on this map represents the results of surveys made on the date indicated and can only be considered as indicating the general condition at that time. Unless otherwise noted on this map, all soundings and soundings are in feet and referred to the International Great Lakes Datum 1985 (IGLD 1985) and all horizontal positions are referred to North American Datum 1983 (NAD83). See the Site Specific Notes for appropriate details. To view a color version of this map, point a web browser to <http://www.lfp.usace.army.mil/waterways/survey/survey.html>. This drawing was prepared using a CAD system. Scaling may be distorted.



SITE SPECIFIC NOTES:
PROJECT DEPTHS AND SOUNDINGS ARE REFERRED TO LOW WATER DATUM OF 569.2 FEET. HORIZONTAL CONTROL IS REFERRED TO OHIO NORTH ZONE.

PROJECT DEPTHS:
18.0 FEET - STA. 120+00 TO STA. 139+97
16.0 FEET - STA. 153+26.68 TO STA. 206+63

THE FILES USED IN THE PREPARATION OF THIS DRAWING ARE ON DISK: HARBOR 2009
FILES: ASH09PCVH1011-1.DGN
ASH09PCV-HP.DGN

SOUNDINGS WERE TAKEN BY THE BUFFALO DISTRICT ARMY CORPS OF ENGINEERS OFFICE, D. WITMER AND PARTY ON MAY 19, 2009, USING GPS POSITIONING, POS-MV VER. 3 AND ASHTECH BR2G BEACON USED; DETROIT SONAR HEAD: 240 KHZ, SEABATT 8101 MULTIBEAM 1.5 DEGREE BEAMS 210 DEGREE ARC HEAVE PITCH AND ROLL: APPLANIX POS-MV VER. 3 VELOCITY PROFILER: INNERSPACE 448; SOFTWARE USED: HYDRACK SURVEY AND TRITON ISIS SURVEY LAUNCH CROTTY

SOUNDING COLOR LEGEND	
	DEPTHS 0.1' OR MORE ABOVE PROJECT DEPTH
	DEPTHS AT OR BELOW PROJECT DEPTH

U.S. ARMY ENGINEER DISTRICT
CORPS OF ENGINEERS
BUFFALO, NEW YORK 14207-3199

ASHTABULA HARBOR, OHIO
PROJECT CONDITION SOUNDINGS 2009
90' 0" 100' 200'
SCALE: 1" = 200'

Sheet reference number:
VH - 102
Sheet **2** of **2**
09S-ASH-12