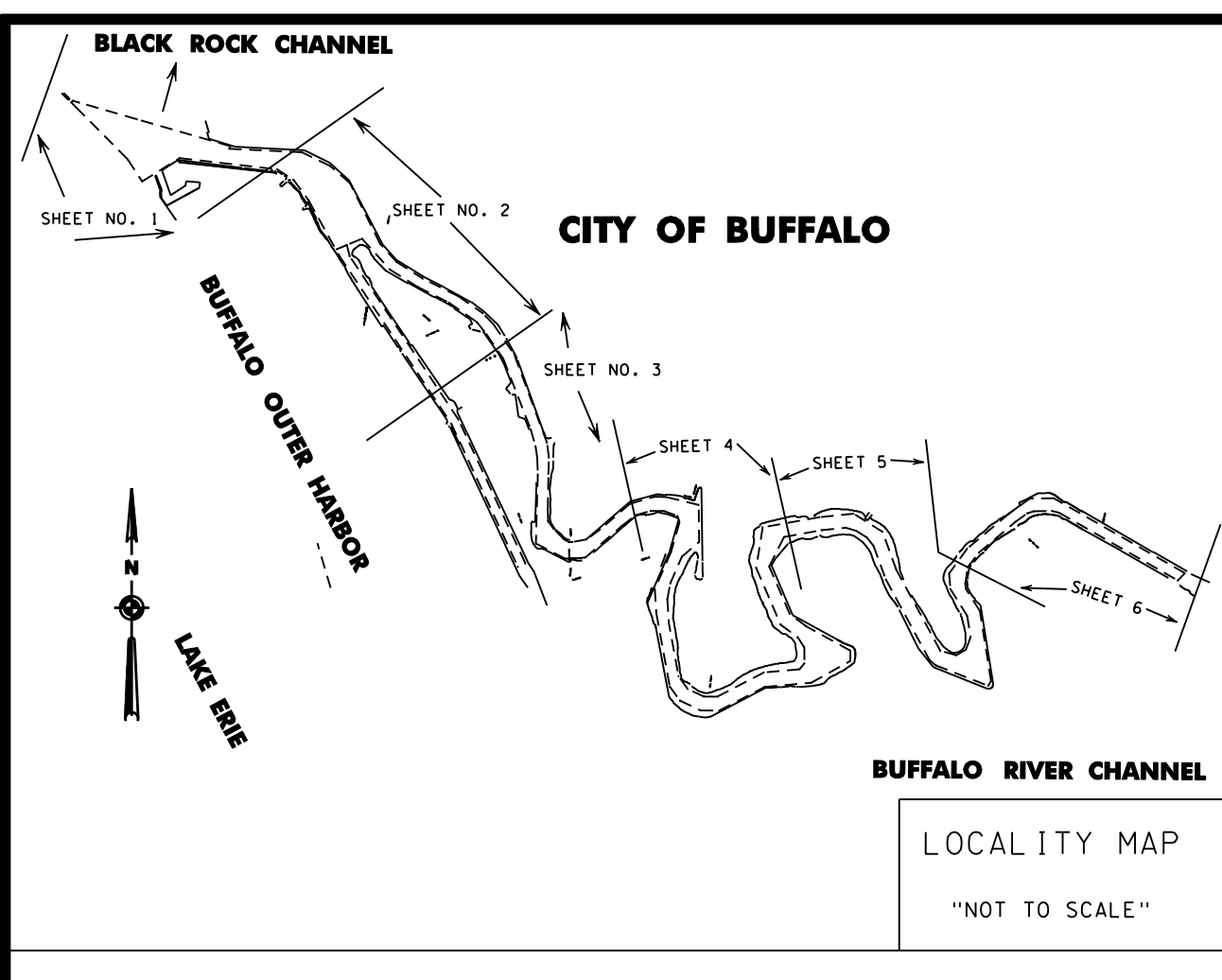
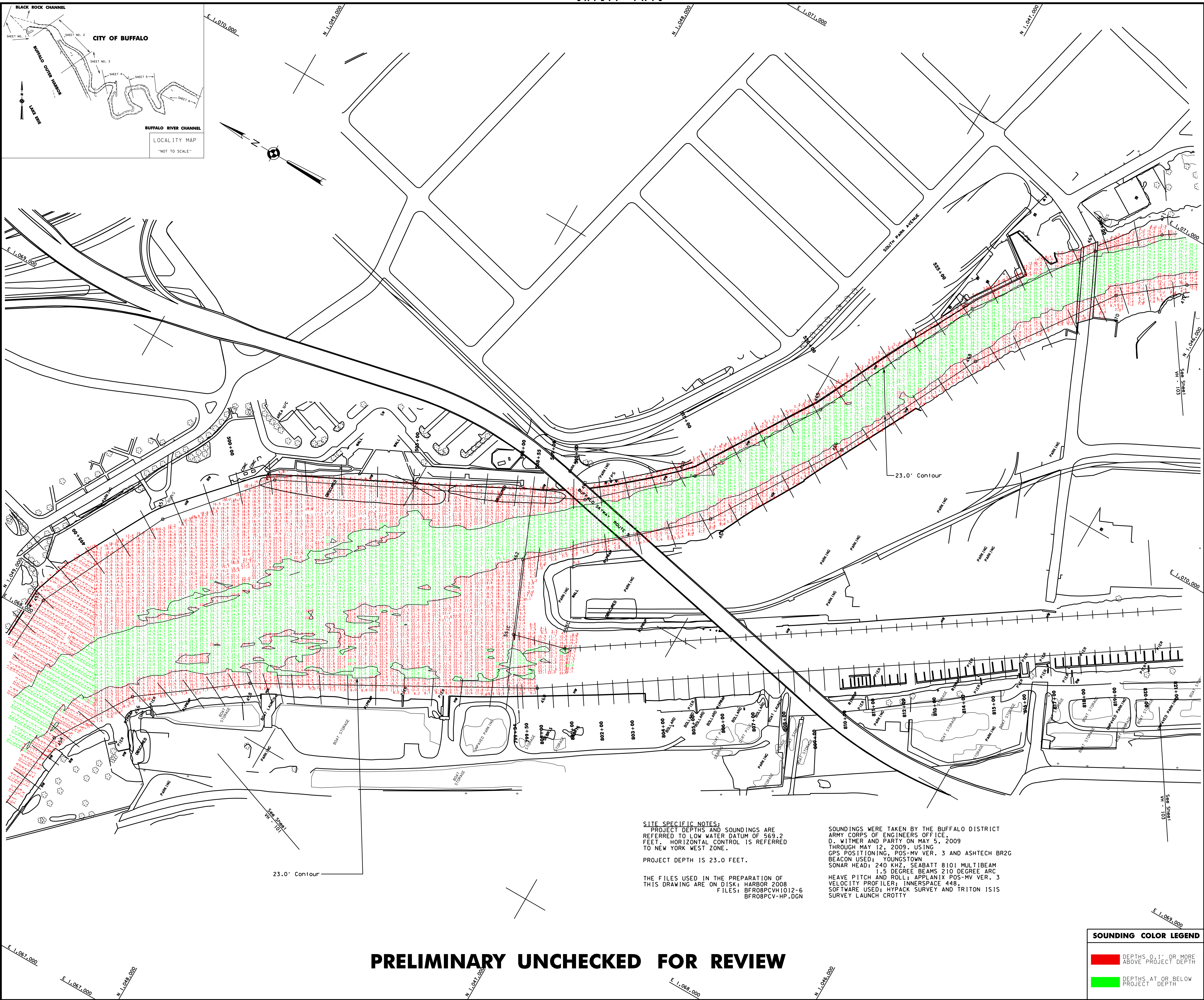


\*\*\* SAFETY PAYS \*\*\*



**SITE SPECIFIC NOTES:**  
 PROJECT DEPTHS AND SOUNDINGS ARE REFERRED TO LOW WATER DATUM OF 569.2 FEET. HORIZONTAL CONTROL IS REFERRED TO NEW YORK WEST ZONE.  
 PROJECT DEPTH IS 23.0 FEET.

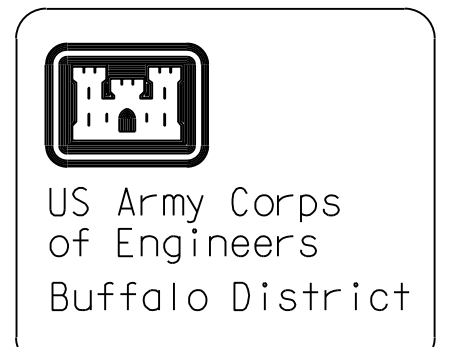
SOUNDINGS WERE TAKEN BY THE BUFFALO DISTRICT ARMY CORPS OF ENGINEERS OFFICE, D. WITMER AND PARTY ON MAY 5, 2009 THROUGH MAY 12, 2009 USING GPS POSITIONING, POS-MV VER. 3 AND ASSTECH BR2G BEACON USED: YOUNGSTOWN SONAR HEAD: 240 KHZ, SEABATT 8101 MULTIBEAM 1.5 DEGREE BEAMS 210 DEGREE ARC HEAVE PITCH AND ROLL: APPLANIX POS-MV VER. 3 VELOCITY PROFILER: INNERSPACE 448. SOFTWARE USED: HYPACK SURVEY AND TRITON ISIS SURVEY LAUNCH CROTTY

THE FILES USED IN THE PREPARATION OF THIS DRAWING ARE ON DISK: HARBOR 2008 FILES: BFR08PCVH1012-6 BFR08PCV-HP.DGN

**PRELIMINARY UNCHECKED FOR REVIEW**

**SOUNDING COLOR LEGEND**

	DEPTHS 0.1' OR MORE ABOVE PROJECT DEPTH
	DEPTHS AT OR BELOW PROJECT DEPTH



**GENERAL NOTES**  
 The information depicted on this map represents the results of surveys made on the date indicated and can only be considered as indicating the general condition at that time. Unless otherwise noted on this map, all depths and soundings are in feet and referred to the International Great Lakes Datum 1985 (IGLD 1985) and all horizontal positions are referred to North American Datum 1983 (NAD83). See the Site Specific Notes for appropriate details. To view a color version of this map, point a web browser to <http://www.lfp.usace.army.mil/waterways/survey/survey.html>. This drawing was prepared using a CAD system. Scaling may be distorted.

Drawn by:	CADD
Checked by:	
Rev. Issued by:	
Drawn:	Survey Unit
Approved:	Chief, Navigation and Maintenance Section

U.S. ARMY ENGINEER DISTRICT  
 CORPS OF ENGINEERS  
 BUFFALO, NEW YORK 14207-3199

BUFFALO HARBOR, N.Y.  
 BUFFALO RIVER AND SHIP CANAL  
**PROJECT CONDITION SOUNDINGS 2009**  
 SCALE: 1" = 100'

Sheet reference number:  
**VH - 102**  
 Sheet 2 of 6  
**09S-BFR-12**

CHECK PRINT FOR FINAL DRAWING

\*\*\* SUPPORT VALUE ENGINEERING - IT PAYS \*\*\*