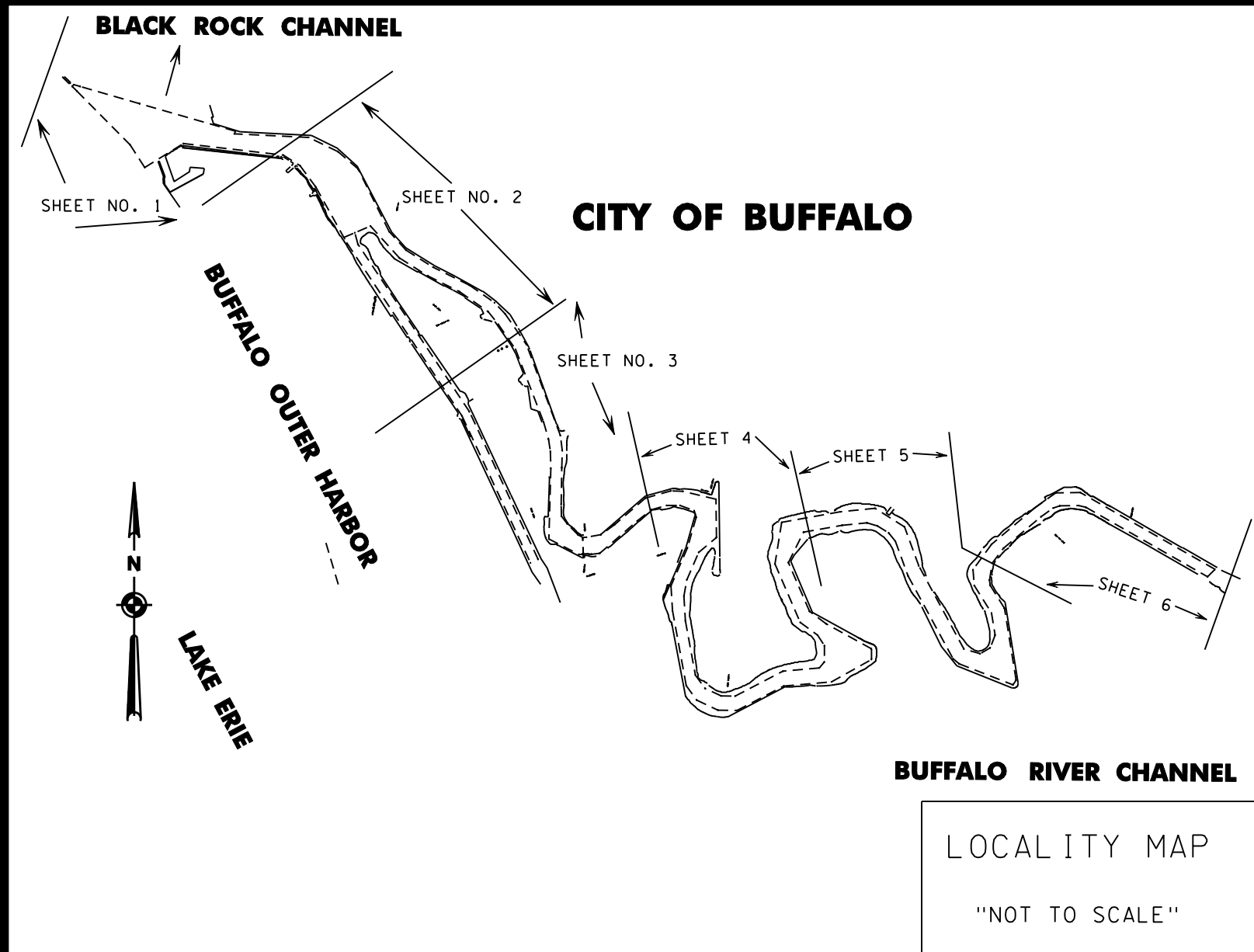
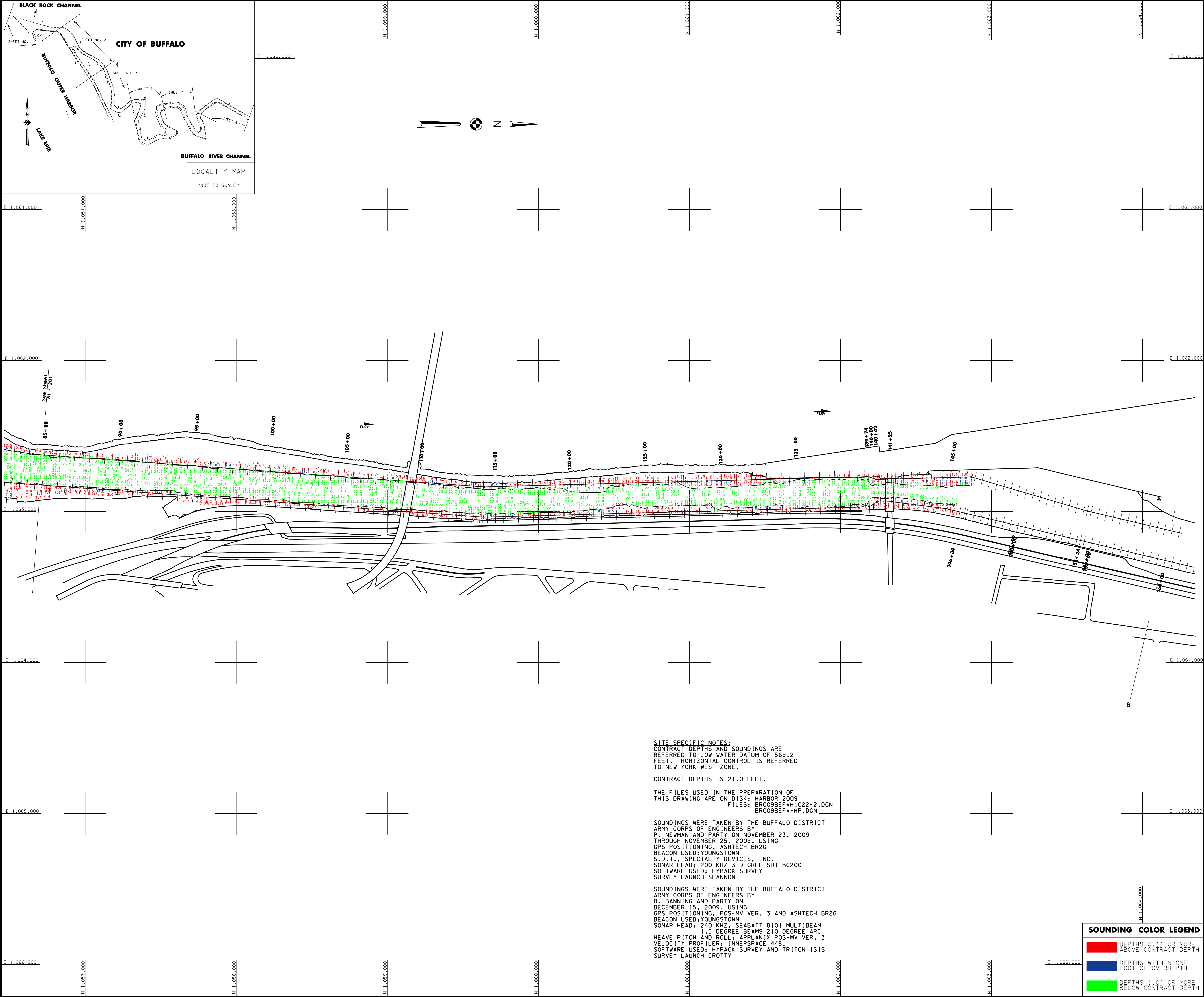


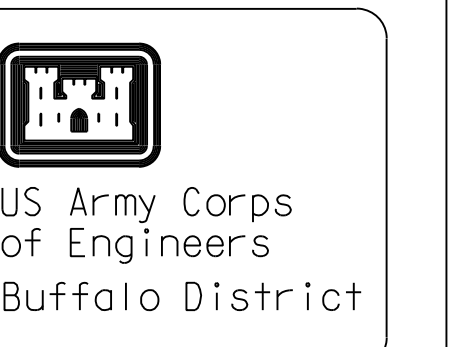
*** SAFETY PAYS ***



SITE SPECIFIC NOTES:
 CONTRACT DEPTHS AND SOUNDINGS ARE REFERRED TO LOW WATER DATUM OF 569.2 FEET. HORIZONTAL CONTROL IS REFERRED TO NEW YORK WEST ZONE.
 CONTRACT DEPTHS IS 21.0 FEET.
 THE FILES USED IN THE PREPARATION OF THIS DRAWING ARE ON DISK: HARBOR 2009
 FILES: BRC09BEFVH1022-2.DGN
 BRC09BEFV-HP.DGN
 SOUNDINGS WERE TAKEN BY THE BUFFALO DISTRICT ARMY CORPS OF ENGINEERS BY P. NEWMAN AND PARTY ON NOVEMBER 23, 2009 THROUGH NOVEMBER 25, 2009. USING GPS POSITIONING, ASHTECH BR2G BEACON USED: YOUNGSTOWN S.D.I., SPECIALTY DEVICES, INC. SONAR HEAD: 200 KHZ 3 DEGREE SD1 BC200 SOFTWARE USED: HYPACK SURVEY SURVEY LAUNCH SHANNON
 SOUNDINGS WERE TAKEN BY THE BUFFALO DISTRICT ARMY CORPS OF ENGINEERS BY D. BANNING AND PARTY ON DECEMBER 15, 2009. USING GPS POSITIONING, POS-MV VER. 3 AND ASHTECH BR2G BEACON USED: YOUNGSTOWN SONAR HEAD: 240 KHZ, SEABATT 8101 MULTIBEAM 1-S DEGREE BEAMS 210 DEGREE ARC HEAVE PITCH AND ROLL: APPLANIX POS-MV VER. 3 VELOCITY PROFILER: INNERSPACE 448. SOFTWARE USED: HYPACK SURVEY AND TRITON ISIS SURVEY LAUNCH CROTTY

SOUNDING COLOR LEGEND

	DEPTHS 0.1' OR MORE ABOVE CONTRACT DEPTH
	DEPTHS WITHIN ONE FOOT OF OVERDEPTH
	DEPTHS 1.0' OR MORE BELOW CONTRACT DEPTH



GENERAL NOTES
 The information depicted on the map represents the results of surveys made on the date indicated and can only be considered as indicating the general condition at that time. Unless otherwise noted on this map, all depths and soundings are in feet and referred to the International Great Lakes Datum 1985 (IGLD 1985) and all horizontal positions are referred to North American Datum 1983 (NAD83). See the Site Specific Notes area for appropriate details. To view a color version of this map, point a web browser to <http://www.lfp.usace.army.mil/waterways/survey/survey.html>. This drawing was prepared using a CAD system. Scaling may be distorted.

Drawn by:	CADD
Checked by:	
Reviewed by:	
Drawn:	Survey Unit
Approved:	Chief, Navigation and Maintenance Section

U.S. ARMY ENGINEER DISTRICT
 CORPS OF ENGINEERS
 BUFFALO, NEW YORK 14207-3199

BLACK ROCK CANAL & TONAWANDA HARBOR, N.Y.
BEFORE CONTRACT DREDGING SOUNDINGS 2009
 SCALE: 1" = 200'
 90' 0" 100' 200'

Sheet reference number:
VH - 202
 Sheet **1** of **2**
095-BRC-22

*** SUPPORT VALUE ENGINEERING - IT PAYS ***