

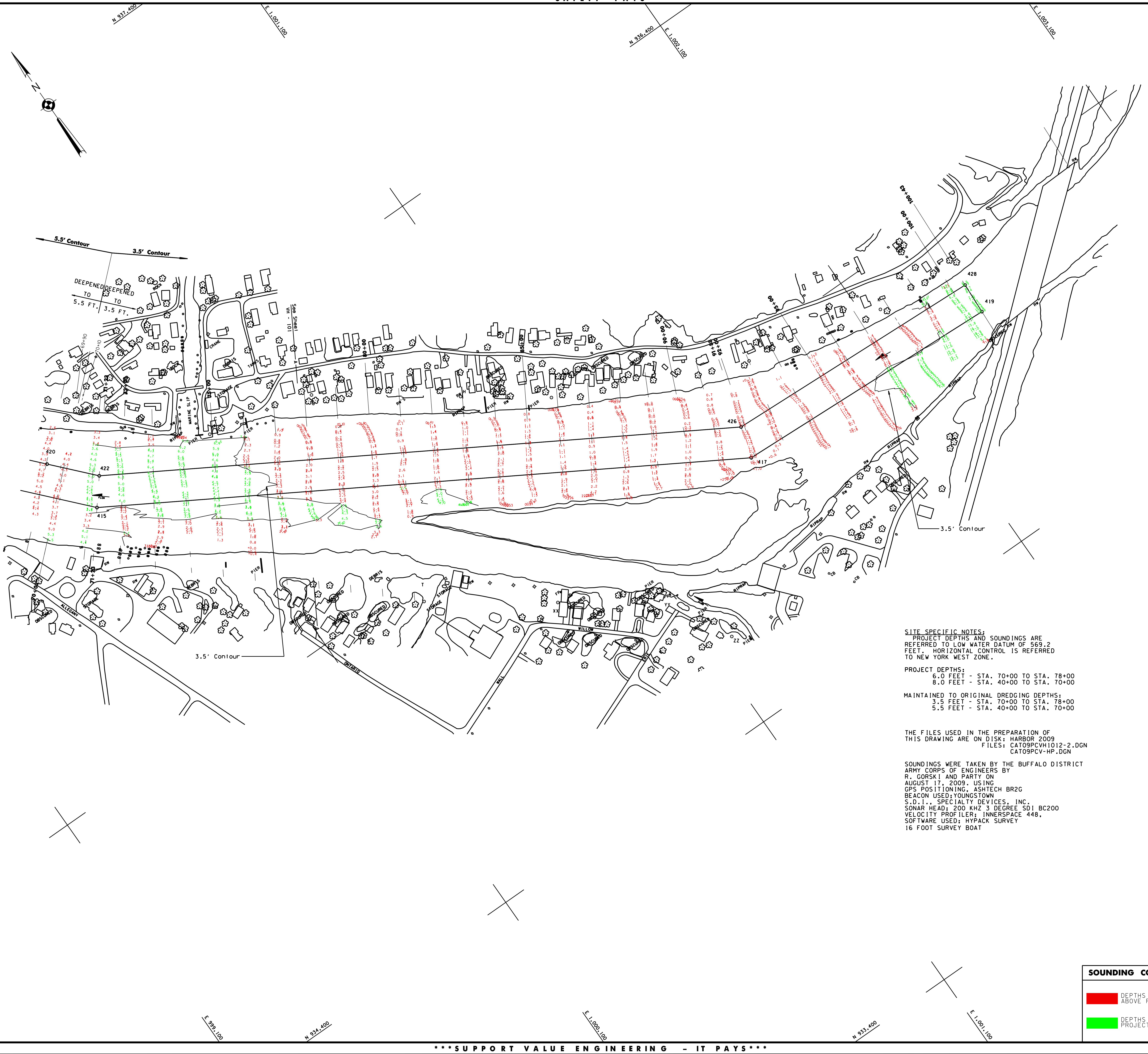
General Notes:
The information depicted on this map represents the results of surveys made on the date indicated and can only be considered as indicating the general condition at that time. Unless otherwise noted on this map, all depths and soundings are in feet and referred to the International Great Lakes Datum 1985 (IGLD 1985) and all horizontal positions are referred to the International datum 1983 (IAD83). See the Site Specific Notes for appropriate details. To view a color version of this map, point a web browser to <http://www.lfe.usace.army.mil/waterways/survey/survey.html>. This drawing was prepared using a CAD system. Scaling may be distorted.

Drawn by: CAD
Checked by:
Reviewed by:
Dist. Survey Unit
Approved:
Chief, W/P, Navigation and Maintenance Section

U.S. ARMY ENGINEER DISTRICT
CORPS OF ENGINEERS
BUFFALO, NEW YORK 14207-3199

CATTARAUGUS CREEK HARBOR, N.Y.
PROJECT CONDITION SOUNDINGS 2009
SCALE: 1" = 100'
25' 0" 50' 100'

Sheet reference number:
VH - 102
Sheet **2** of **2**
09S-CAT-12



SITE SPECIFIC NOTES:
PROJECT DEPTHS AND SOUNDINGS ARE REFERRED TO LOW WATER DATUM OF 569.2 FEET. HORIZONTAL CONTROL IS REFERRED TO NEW YORK WEST ZONE.
PROJECT DEPTHS:
6.0 FEET - STA. 70+00 TO STA. 78+00
8.0 FEET - STA. 40+00 TO STA. 70+00
MAINTAINED TO ORIGINAL DREDGING DEPTHS:
3.5 FEET - STA. 70+00 TO STA. 78+00
5.5 FEET - STA. 40+00 TO STA. 70+00

THE FILES USED IN THE PREPARATION OF THIS DRAWING ARE ON DISK: HARBOR 2009
FILES: CAT09PCVH1012-2.DGN
CAT09PCV-HP.DGN

SOUNDINGS WERE TAKEN BY THE BUFFALO DISTRICT ARMY CORPS OF ENGINEERS BY R. GORSKI AND PARTY ON AUGUST 17, 2009. USING GPS POSITIONING, ASHTACH BR20 BEACON USED: YOUNGSTOWN S.D.I., SPECIALTY DEVICES, INC. SONAR HEAD: 200 KHZ 3 DEGREE SDI BC200 VELOCITY PROFILER: INnersPACE 448. SOFTWARE USED: HYPACK SURVEY 16 FOOT SURVEY BOAT

SOUNDING COLOR LEGEND

	DEPTHS 0.1' OR MORE ABOVE PROJECT DEPTH
	DEPTHS AT OR BELOW PROJECT DEPTH