

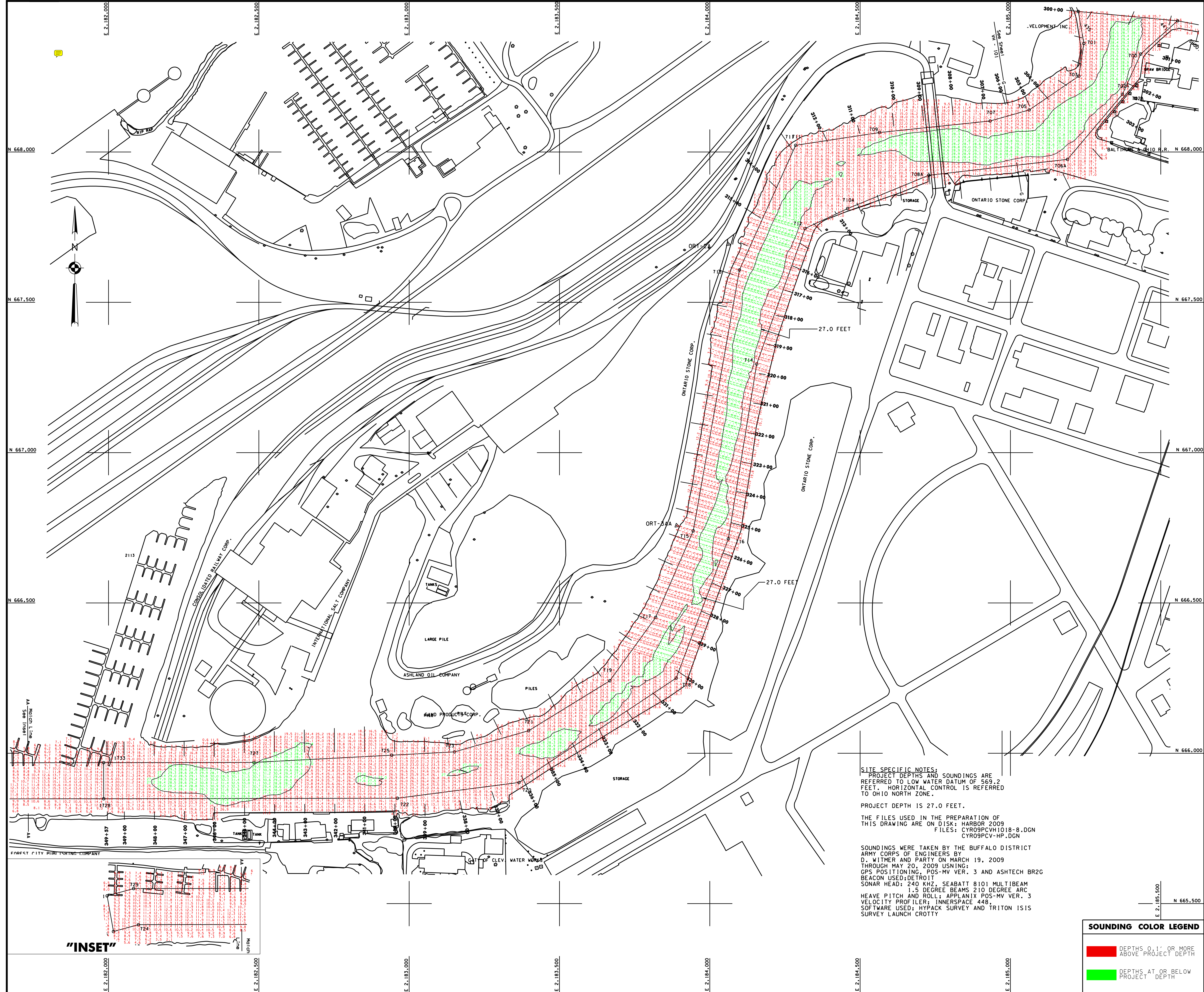
General Notes
The information depicted on the map represents the results of surveys made on the date indicated and can only be considered as indicating the general condition of that date. Unless otherwise noted on this map, all depths and soundings are in feet and are referred to the International Great Lakes Datum 1985 (IGLD 1985) and all horizontal positions are referred to the North American Datum 1983 (NAD83). See the Site Specific Notes area for appropriate details. To view a color version of this map, point a web browser to <http://www.frb.usace.army.mil/webpages/survey/survey.html>. This drawing was prepared using a CAD system. Scaling may be distorted.

Drawn by: CAD
Checked by:
Reviewed by:
Date:
Chief, NYPA Navigation and Maintenance Section

U.S. ARMY ENGINEER DISTRICT
CORPS OF ENGINEERS
BUFFALO, NEW YORK 14207-3199

CLEVELAND HARBOR, OHIO
CUYAHOGA RIVER AND OLD RIVER
PROJECT CONDITION SOUNDINGS 2009
SCALE: 1" = 100'
25' 0" 50' 100'

Sheet reference number:
VH - 108
Sheet 8 of 8
095-CYR-18



SITE SPECIFIC NOTES:
PROJECT DEPTHS AND SOUNDINGS ARE REFERRED TO LOW WATER DATUM OF 569.2 FEET. HORIZONTAL CONTROL IS REFERRED TO OHIO NORTH ZONE.
PROJECT DEPTH IS 27.0 FEET.
THE FILES USED IN THE PREPARATION OF THIS DRAWING ARE ON DISK: HARBOR 2009
FILES: CYR09PCVH1018-8.DGN
CYR09PCV-HP.DGN
SOUNDINGS WERE TAKEN BY THE BUFFALO DISTRICT ARMY CORPS OF ENGINEERS BY D. WITMER AND PARTY ON MARCH 19, 2009 THROUGH MAY 20, 2009 USING:
GPS POSITIONING: POS-MV VER. 3 AND ASHTECH BR2G
BEACON USED: DETROIT
SONAR HEAD: 240 KHZ, SEABATT 8101 MULTIBEAM
1.5 DEGREE BEAMS 210 DEGREE ARC
HEAVE PITCH AND ROLL: APPLANIX POS-MV VER. 3
VELOCITY PROFILER: INNERSPACE 448,
SOFTWARE USED: HYPACK SURVEY AND TRITON ISIS
SURVEY LAUNCH CROTTY

SOUNDING COLOR LEGEND

| | |
|-------|---|
| Red | DEPTHS 0.1' OR MORE ABOVE PROJECT DEPTH |
| Green | DEPTHS AT OR BELOW PROJECT DEPTH |

