

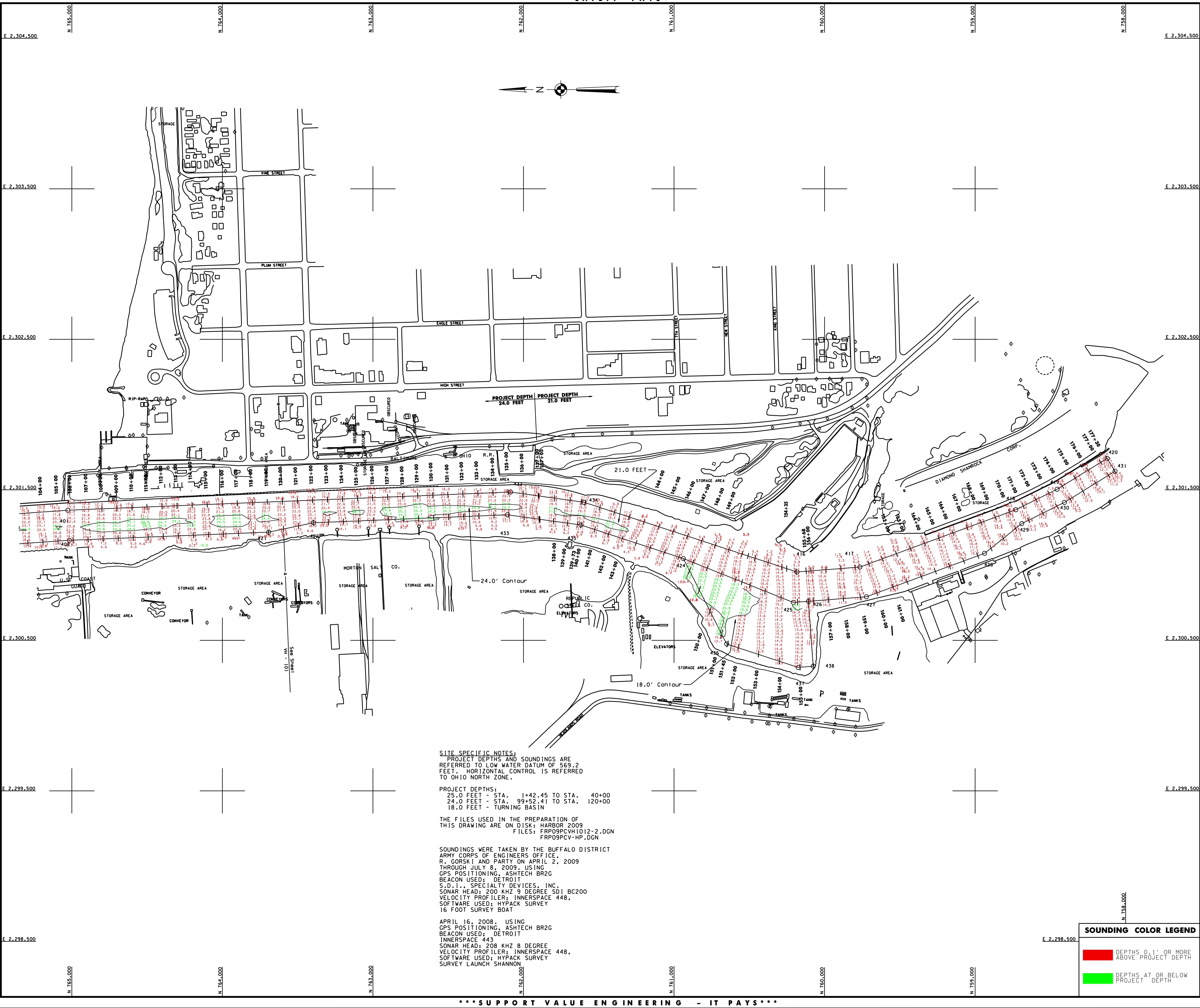
GENERAL NOTES
The information depicted on this map represents the results of surveys made on the date indicated and can only be considered as indicating the general condition at that time. Unless otherwise noted on this map, all depths and soundings are in feet and referred to the International Great Lakes Datum 1985 (IGLD 1985) and all horizontal positions are referred to North American Datum 1983 (NAD83). See the Site Specific Notes for appropriate details. To view a color version of this map, point a web browser to <http://www.frp.usace.army.mil/waterways/survey/survey.html>. This drawing was prepared using a CAD system. Scaling may be distorted.

Drawn by: CADD
Checked by: [blank]
Reviewed by: [blank]
Date: [blank]
Approved: [blank]
Chief, Navigation and Maintenance Section

U.S. ARMY ENGINEER DISTRICT
CORPS OF ENGINEERS
BUFFALO, NEW YORK 14207-3199

FAIRPORT HARBOR, OHIO
AFTER CONTRACT DREDGING SOUNDINGS 2009
SCALE: 1" = 200'
30' 0" 100' 200'

Sheet reference number:
VH - 102
Sheet **2** of **2**
095-FRP-12



SITE SPECIFIC NOTES:
PROJECT DEPTHS AND SOUNDINGS ARE REFERRED TO LOW WATER DATUM OF 569.2 FEET. HORIZONTAL CONTROL IS REFERRED TO OHIO NORTH ZONE.
PROJECT DEPTHS:
25.0 FEET - STA. 1+42.45 TO STA. 40+00
24.0 FEET - STA. 99+52.41 TO STA. 120+00
18.0 FEET - TURNING BASIN
THE FILES USED IN THE PREPARATION OF THIS DRAWING ARE ON DISK: HARBOR 2009
FILES: FRP09PCVH1012-2.DGN
FRP09PCV-HP.DGN
SOUNDINGS WERE TAKEN BY THE BUFFALO DISTRICT ARMY CORPS OF ENGINEERS OFFICE.
R. GORSKI AND PARTY ON APRIL 2, 2009 THROUGH JULY 8, 2009, USING GPS POSITIONING, ASHTECH BR2G BEACON USED; DETROIT S.D.I., SPECIALTY DEVICES, INC. SONAR HEAD: 200 KHZ 9 DEGREE S01 BC200 VELOCITY PROFILER; INnersPACE 448. SOFTWARE USED; HYPACK SURVEY 16 FOOT SURVEY BOAT
APRIL 16, 2008, USING GPS POSITIONING, ASHTECH BR2G BEACON USED; DETROIT INnersPACE 443 SONAR HEAD: 208 KHZ 8 DEGREE VELOCITY PROFILER; INnersPACE 448. SOFTWARE USED; HYPACK SURVEY SURVEY LAUNCH SHANNON

SOUNDING COLOR LEGEND

	DEPTHS 0.1' OR MORE ABOVE PROJECT DEPTH
	DEPTHS AT OR BELOW PROJECT DEPTH