

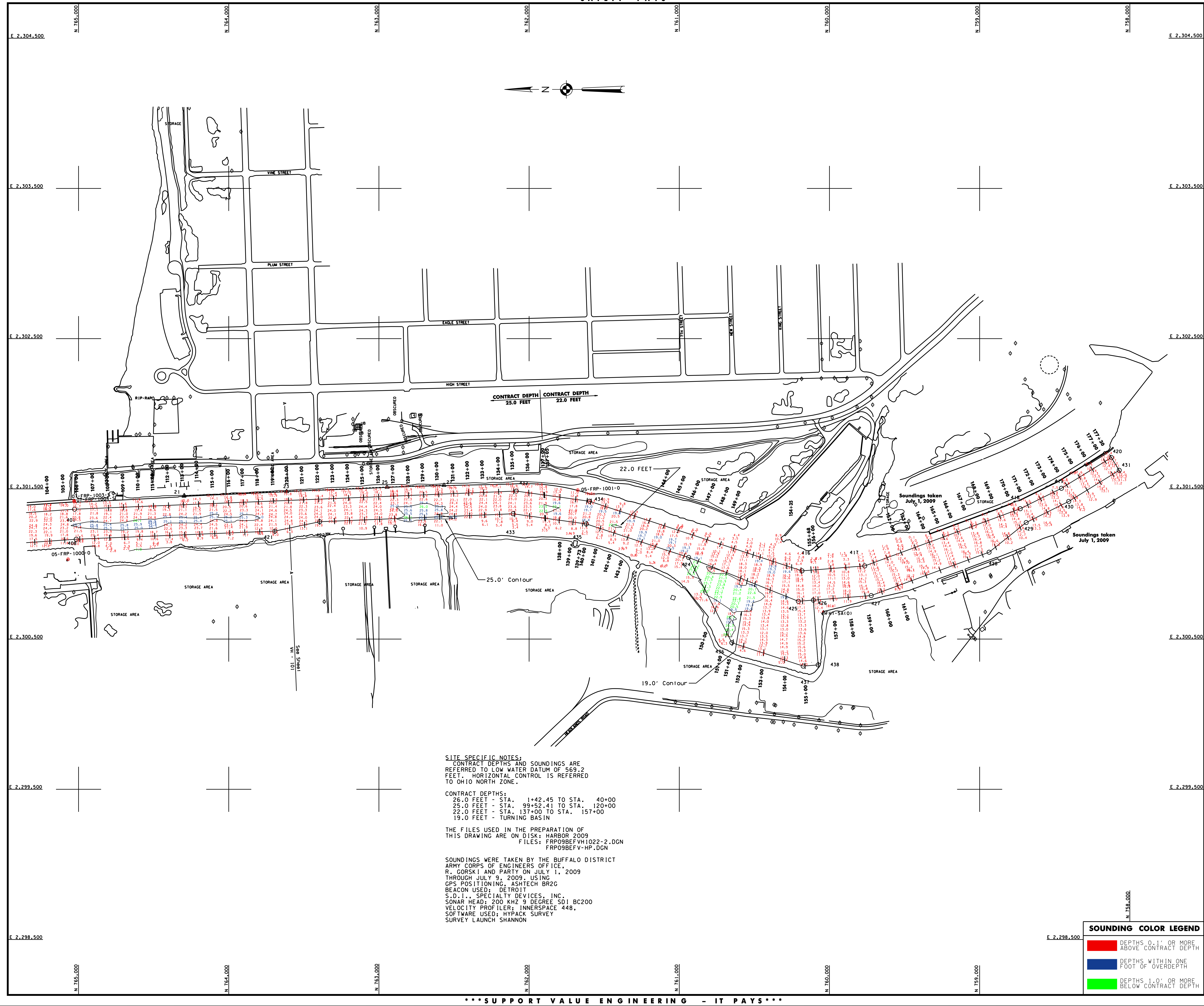
GENERAL NOTES  
The information depicted on this map represents the results of surveys made on the date indicated and can only be considered as indicating the general condition at that time. Unless otherwise noted on this map, all depths and soundings are in feet and referred to the International Great Lakes Datum 1985 (IGLD 1985) and all horizontal positions are referred to North American datum 1983 (NAD83). See the Site Specific Notes for appropriate details. To view a color version of this map, point a web browser to <http://www.frd.usace.army.mil/waterways/survey/survey.html>. This drawing was prepared using a CAD system. Scaling may be distorted.

Drawn by:	CADD
Checked by:	
Reviewed by:	
Design:	Survey Unit
Approved:	Director
CHIEF, WYPA Navigation and Maintenance Section	

U.S. ARMY ENGINEER DISTRICT  
CORPS OF ENGINEERS  
BUFFALO, NEW YORK 14207-3199

FAIRPORT HARBOR, OHIO  
**BEFORE CONTRACT DREDGING SOUNDINGS 2009**  
30' 0" 100' 200'  
SCALE: 1" = 200'

Sheet reference number:  
**VH - 202**  
Sheet 2 of 2  
**09S-FRP-22**



**SITE SPECIFIC NOTES:**  
CONTRACT DEPTHS AND SOUNDINGS ARE REFERRED TO LOW WATER DATUM OF 569.2 FEET. HORIZONTAL CONTROL IS REFERRED TO OHIO NORTH ZONE.  
CONTRACT DEPTHS:  
26.0 FEET - STA. 1+42.45 TO STA. 40+00  
25.0 FEET - STA. 99+52.41 TO STA. 120+00  
22.0 FEET - STA. 137+00 TO STA. 157+00  
19.0 FEET - TURNING BASIN  
THE FILES USED IN THE PREPARATION OF THIS DRAWING ARE ON DISK: HARBOR 2009  
FILES: FRP09BEFVH1022-2.DGN  
FRP09BEFV-HP.DGN  
SOUNDINGS WERE TAKEN BY THE BUFFALO DISTRICT ARMY CORPS OF ENGINEERS OFFICE, R. CORSKI AND PARTY ON JULY 1, 2009 THROUGH JULY 9, 2009, USING GPS POSITIONING, ASHTECH BR2C BEACON USED: DETROIT S.D.I., SPECIALTY DEVICES, INC. SONAR HEAD: 200 KHZ 9 DEGREE SD1 BC200 VELOCITY PROFILER: INNERSPACE 448. SOFTWARE USED: HYDRACK SURVEY SURVEY LAUNCH SHANNON

**SOUNDING COLOR LEGEND**

Red	DEPTHS 0.1' OR MORE ABOVE CONTRACT DEPTH
Blue	DEPTHS WITHIN ONE FOOT OF OVERDEPTH
Green	DEPTHS 1.0' OR MORE BELOW CONTRACT DEPTH