

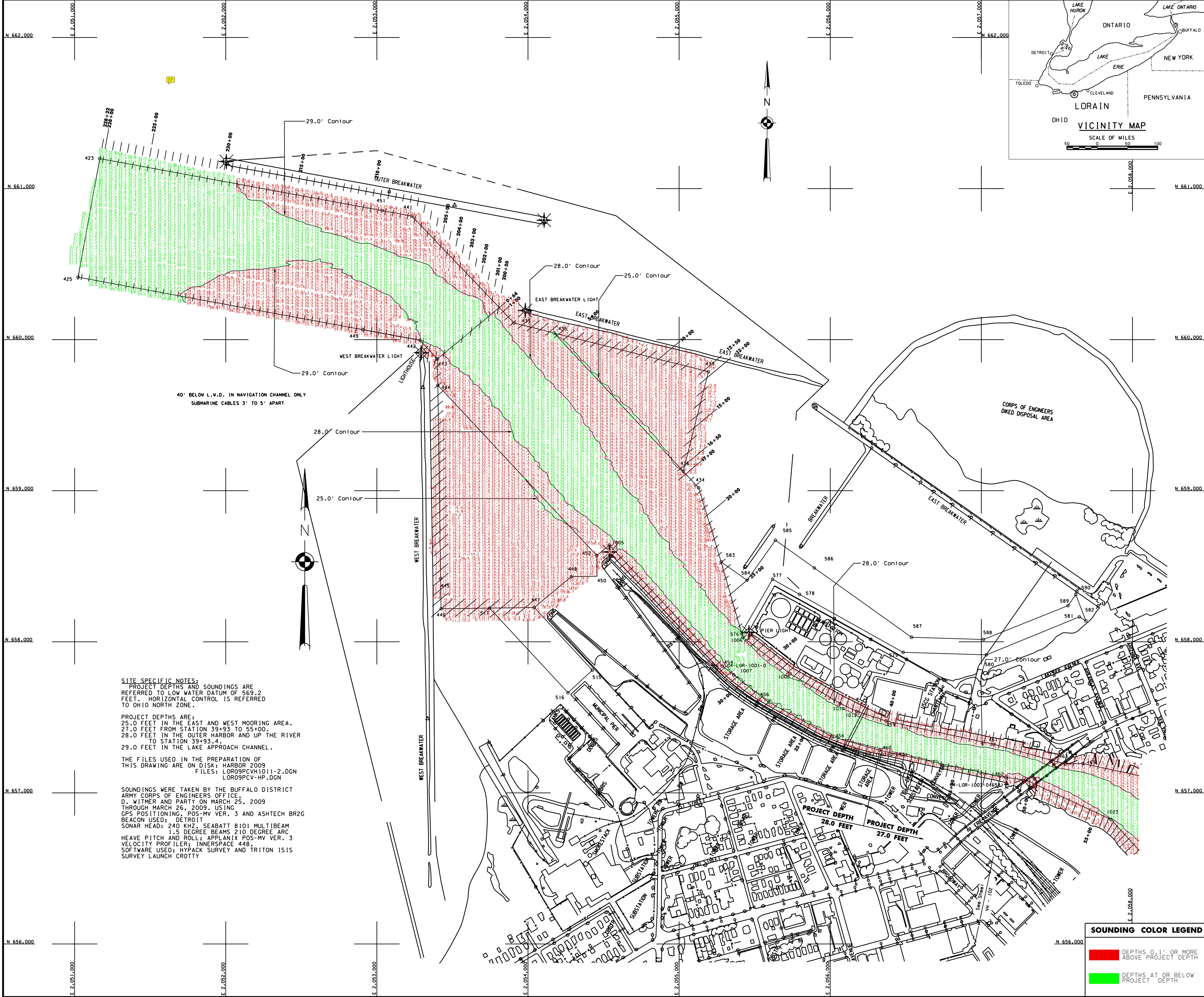
GENERAL NOTES  
 The information depicted on this map represents the results of surveys made on the date indicated and can only be considered as indicating the general location of the features. No other use should be made of this information without the express approval of the District Engineer. This drawing is based on the data as of the date indicated and is not to be used for any other purpose. Specific areas for appropriate details, to view a color version of this map, point a web browser to <http://www.17h.usace.army.mil/activities/survey/survey.html>. This drawing was prepared using a CAD system. Scaling may be distorted.

Drawn by: CAD  
 Checked by:  
 Reviewed by:  
 Chief, Survey Unit  
 Date:

U.S. ARMY ENGINEER DISTRICT  
 CORPS OF ENGINEERS  
 BUFFALO, NEW YORK 14207-3199

LORAIN HARBOR, OHIO  
**PROJECT CONDITION SOUNDINGS 2009**  
 SCALE OF FEET  
 50.0' 100.0' 200.0'

Sheet Reference number:  
**VH - 101**  
 Sheet 1 of 2  
**08S-LOR-1/1**



40' BELOW L.W.D. IN NAVIGATION CHANNEL ONLY  
 SUBMARINE CABLES 3' TO 5' APART

**SITE SPECIFIC NOTES:**  
 PROJECT DEPTHS AND SOUNDINGS ARE REFERRED TO LOW WATER DATUM OF 569.2 FEET. HORIZONTAL CONTROL IS REFERRED TO OHIO NORTH ZONE.  
 PROJECT DEPTHS ARE:  
 25.0 FEET IN THE EAST AND WEST MOORING AREA.  
 27.0 FEET FROM STATION 39+93 TO 55+00.  
 28.0 FEET IN THE OUTER HARBOR AND UP THE RIVER TO STATION 39+93.4.  
 29.0 FEET IN THE LAKE APPROACH CHANNEL.  
 THE FILES USED IN THE PREPARATION OF THIS DRAWING ARE ON DISK: HARBOR 2009  
 FILES: LOR09PCVH1011-2.DGN  
 LOR09PCV-HP.DGN  
 SOUNDINGS WERE TAKEN BY THE BUFFALO DISTRICT ARMY CORPS OF ENGINEERS OFFICE, D. WITMER AND PARTY ON MARCH 25, 2009 THROUGH MARCH 26, 2009. USING GPS POSITIONING, POS-MV VER. 3 AND ASYTECH BR2C BEACON USED: DETROIT SONAR HEAD: 240 KHZ, SEABATT 8101 MULTIBEAM 1.5 DEGREE BEAMS 210 DEGREE ARC HEAVE PITCH AND ROLL: APPLANIX POS-MV VER. 3 VELOCITY PROFILER: INNERSPACE 448. SOFTWARE USED: HYPACK SURVEY AND TRITON ISIS SURVEY LAUNCH CROTTY

**SOUNDING COLOR LEGEND**

	DEPTHS 0.1' OR MORE ABOVE PROJECT DEPTH
	DEPTHS AT OR BELOW PROJECT DEPTH