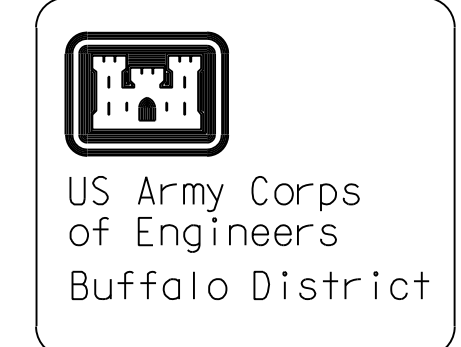
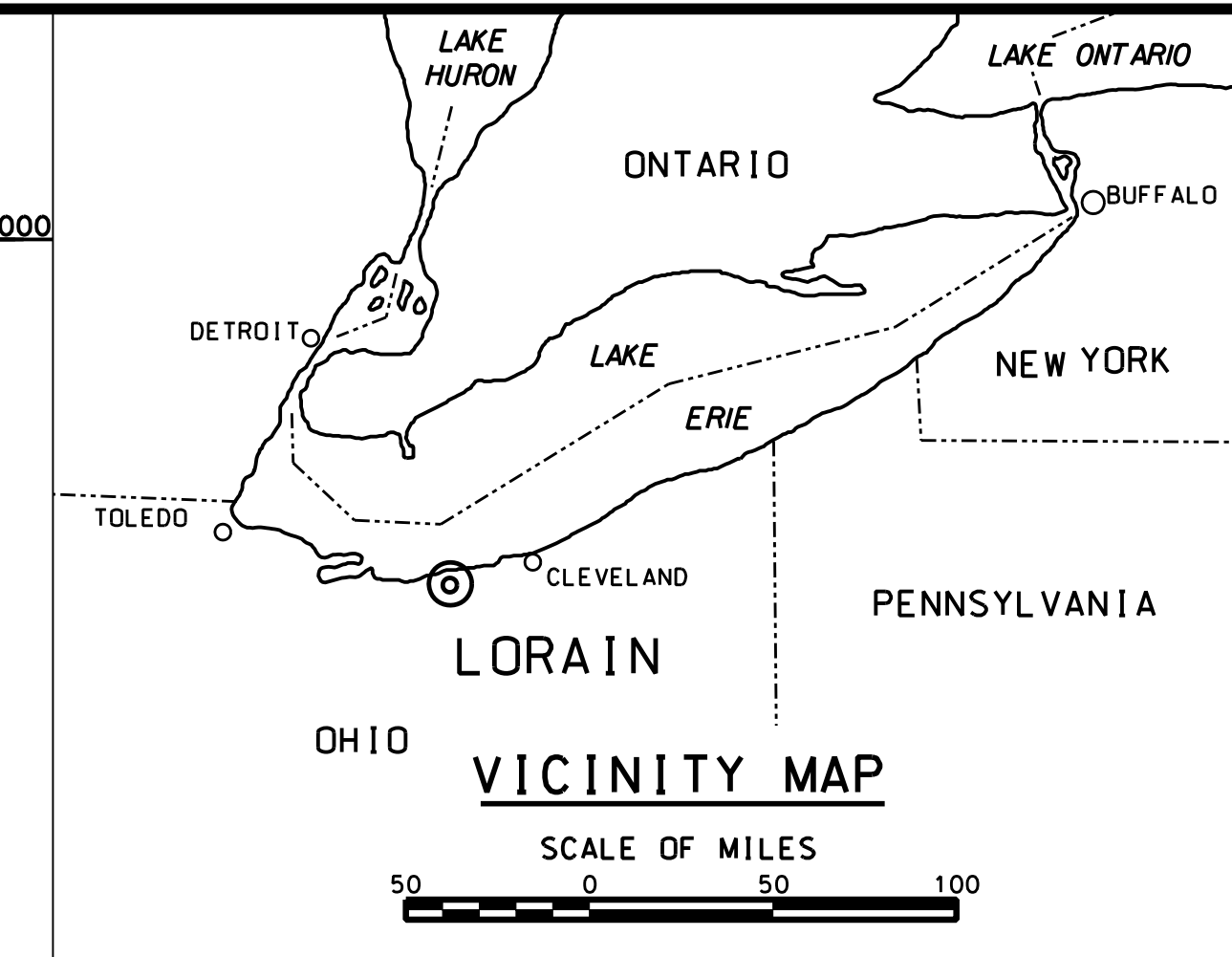


SAFETY PAYS



General Notes

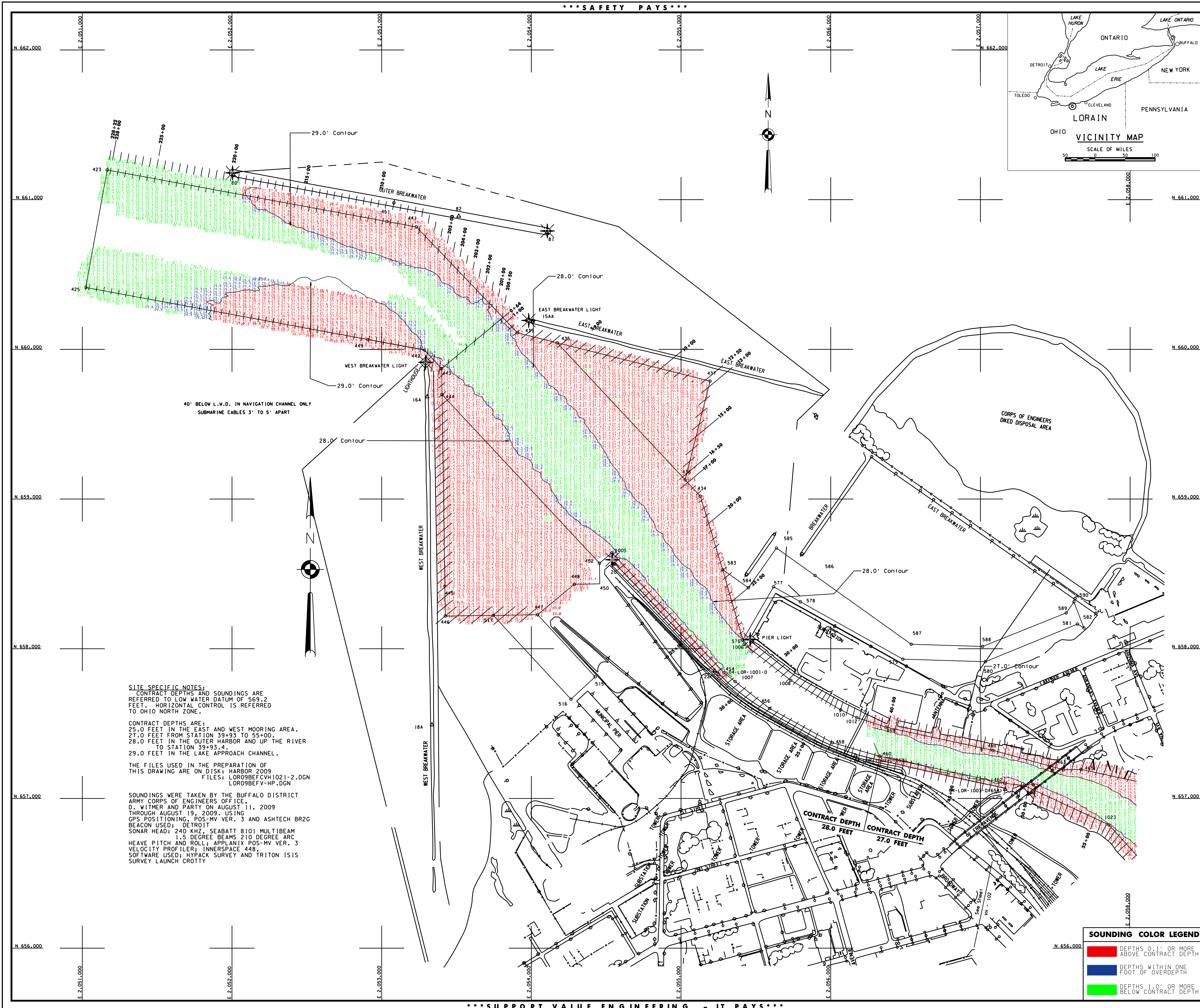
The information depicted on this map represents the results of surveys made on the date indicated and can only be considered as indicating the general condition of the area. Unless otherwise noted on this map, all depths and soundings are in feet and referred to the International Great Lakes Datum 1985 (IGLD 1985) and all horizontal positions are referred to North American Datum 1983 (NAD83). See the Site Specific Notes for details on the survey methods used for the collection of this data. Horizontal and vertical datums are indicated on the drawing. This drawing was prepared using a CAD system. Scaling may be distorted.

Drawn by: CDD
 Checked by:
 Reviewed by:
 Chief, Survey Unit
 Approved:
 Dates:
 Chief, NYPA Navigation and Maintenance Section

U.S. ARMY ENGINEER DISTRICT
 CORPS OF ENGINEERS
 BUFFALO, NEW YORK 14207-3199

LORAIN HARBOR, OHIO
 BEFORE CONTRACT DREDGING SOUNDINGS 2009
 SCALE OF FEET
 50 TO 100 = 200
 SCALE: 1" = 200'

Sheet reference number:
VH - 201
 Sheet 1 of 2
095-LOR-21



SITE SPECIFIC NOTES:
 CONTRACT DEPTHS AND SOUNDINGS ARE REFERRED TO LOW WATER DATUM OF 569.2 FEET. HORIZONTAL CONTROL IS REFERRED TO OHIO NORTH ZONE.

CONTRACT DEPTHS ARE:
 25.0 FEET IN THE EAST AND WEST MOORING AREA.
 27.0 FEET FROM STATION 39+93 TO 55+00.
 28.0 FEET IN THE OUTER HARBOR AND UP THE RIVER TO STATION 39+93.4.
 29.0 FEET IN THE LAKE APPROACH CHANNEL.

THE FILES USED IN THE PREPARATION OF THIS DRAWING ARE ON DISK: HARBOR 2009
 FILES: LOR09BEFCVH1021-2.DGN
 LOR09BEFV-HP.DGN

SOUNDINGS WERE TAKEN BY THE BUFFALO DISTRICT ARMY CORPS OF ENGINEERS OFFICE, D. WITMER AND PARTY ON AUGUST 11, 2009 THROUGH AUGUST 19, 2009, USING GPS POSITIONING, POS-MV VER. 3 AND ASHTECH BR2G BEACON USED; DETROIT SONAR HEAD: 240 KHZ, SEABATT 8101 MULTIBEAM 1.5 DEGREE BEAMS 210 DEGREE ARC HEAVE PITCH AND ROLL; APPLANIX POS-MV VER. 3 VELOCITY PROFILER; INNERSPACE 448. SOFTWARE USED: HYPACK SURVEY AND TRITON ISIS SURVEY LAUNCH CROTTY

SOUNDING COLOR LEGEND

	DEPTHS 0.1' OR MORE ABOVE CONTRACT DEPTH
	DEPTHS WITHIN ONE FOOT OF OVERDEPTH
	DEPTHS 1.0' OR MORE BELOW CONTRACT DEPTH

SUPPORT VALUE ENGINEERING - IT PAYS