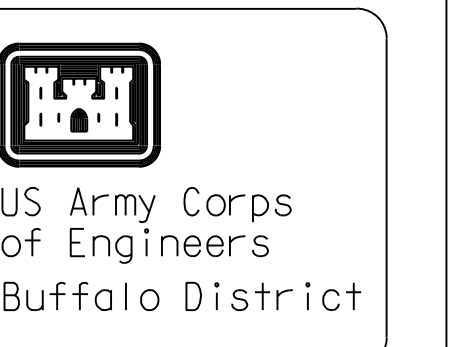
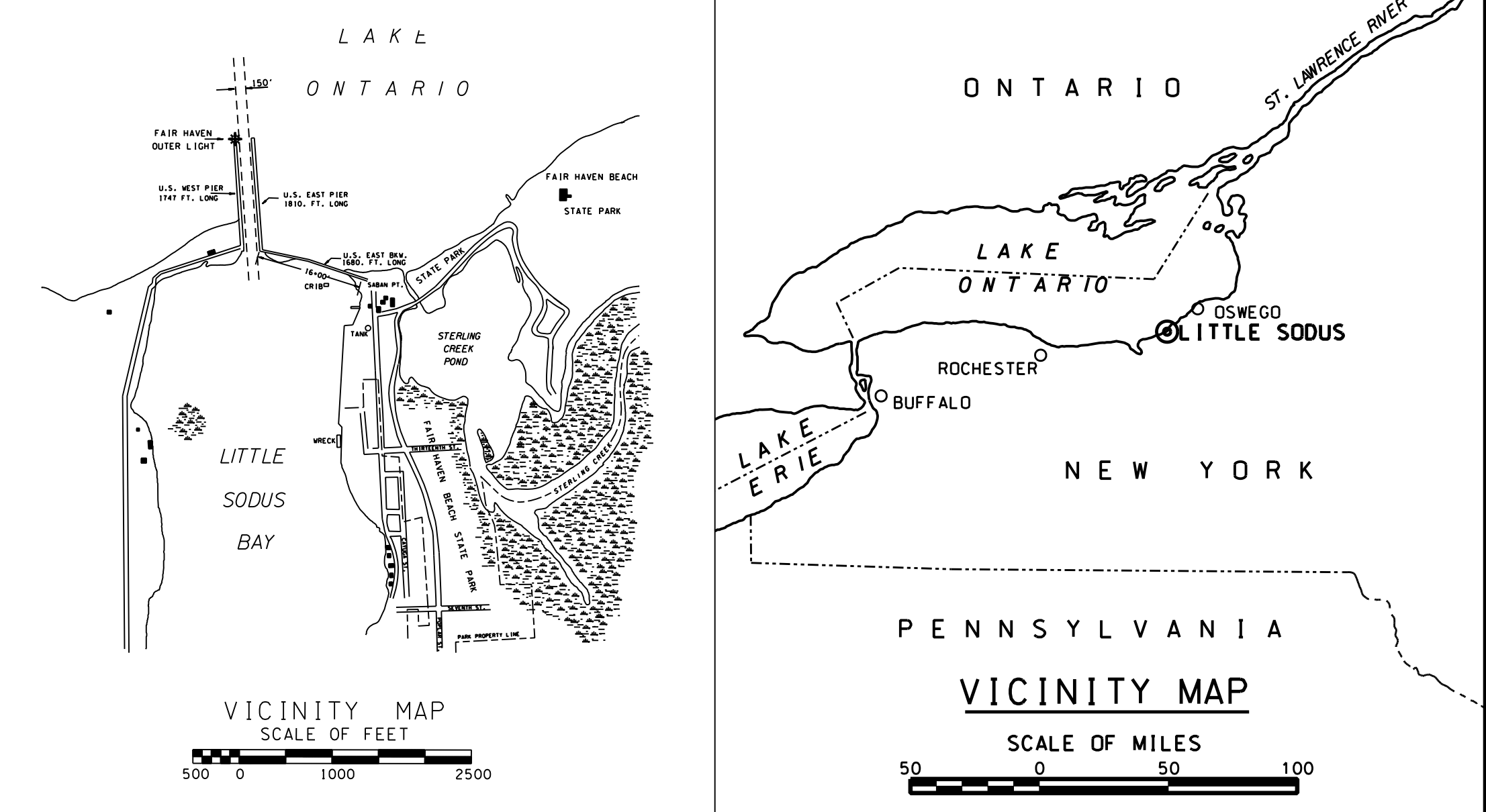


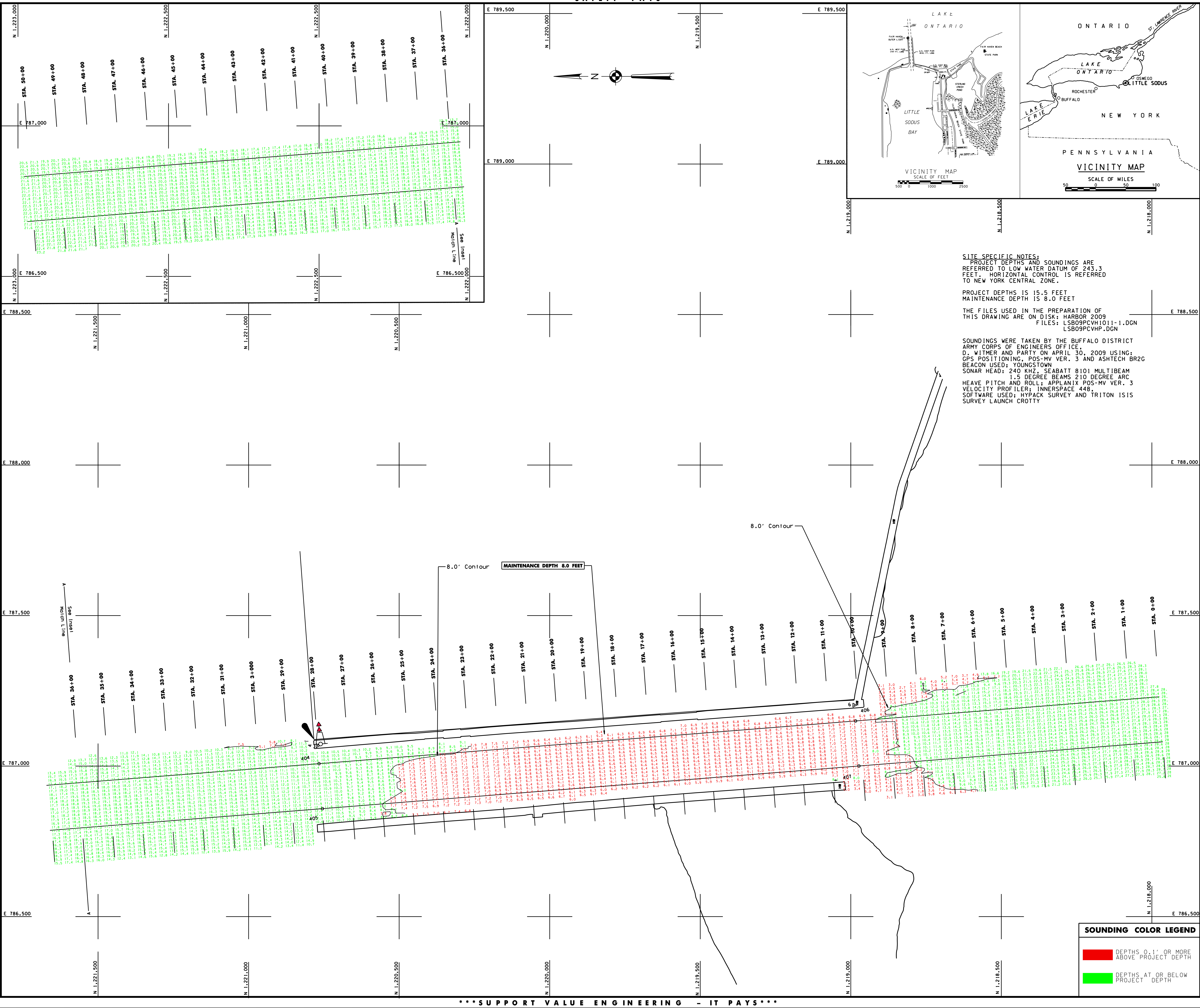
*** SAFETY PAYS ***



GENERAL NOTES:
The information depicted on this map represents the results of surveys made on the date indicated and can only be considered as indicating the general condition at that time. Unless otherwise noted on this map, all depths and soundings are in feet and are referred to the International Great Lakes Datum 1985 (IGLD 1985) and all horizontal positions are referred to North American Datum 1983 (NAD83). See the Site Specific Notes for appropriate details. To view a color version of this map, point a web browser to <http://www.frd.usace.army.mil/waterways/survey/survey.html>. This drawing was prepared using a CAD system. Scaling may be distorted.

SITE SPECIFIC NOTES:
PROJECT DEPTHS AND SOUNDINGS ARE REFERRED TO LOW WATER DATUM OF 243.3 FEET. HORIZONTAL CONTROL IS REFERRED TO NEW YORK CENTRAL ZONE.
PROJECT DEPTHS IS 15.5 FEET
MAINTENANCE DEPTH IS 8.0 FEET
THE FILES USED IN THE PREPARATION OF THIS DRAWING ARE ON DISK: HARBOR 2009
FILES: LSB09PCVH1011-1.DGN
LSB09PCVHP.DGN

SOUNDINGS WERE TAKEN BY THE BUFFALO DISTRICT ARMY CORPS OF ENGINEERS OFFICE, D. WITMER AND PARTY ON APRIL 30, 2009 USING: GPS POSITIONING: POS-MV VER. 3 AND ASYTECH BR2C BEACON USED: YOUNGSTOWN SONAR HEAD: 240 KHZ, SEABATT 8101 MULTIBEAM 1.5 DEGREE BEAMS 210 DEGREE ARC VELOCITY PROFILER: INnersPACE 448. SOFTWARE USED: HYPACK SURVEY AND TRITON ISIS SURVEY LAUNCH CROTTY



SOUNDING COLOR LEGEND

	DEPTHS 0.1' OR MORE ABOVE PROJECT DEPTH
	DEPTHS AT OR BELOW PROJECT DEPTH

Drawn by:	CADD
Checked by:	
Reviewed by:	
Drawn:	Survey Unit
Approved:	Dist.
Chief, NYPA Navigation and Maintenance Section	

U.S. ARMY ENGINEER DISTRICT
CORPS OF ENGINEERS
BUFFALO, NEW YORK 14207-3199

LITTLE SODUS BAY HARBOR, N.Y.
PROJECT CONDITION SOUNDINGS 2009
SCALE: 1" = 100'
30' 25' 0'

Sheet reference number:
VH - 101
Sheet 1 of 1
09S-LSB-VI

*** SUPPORT VALUE ENGINEERING - IT PAYS ***