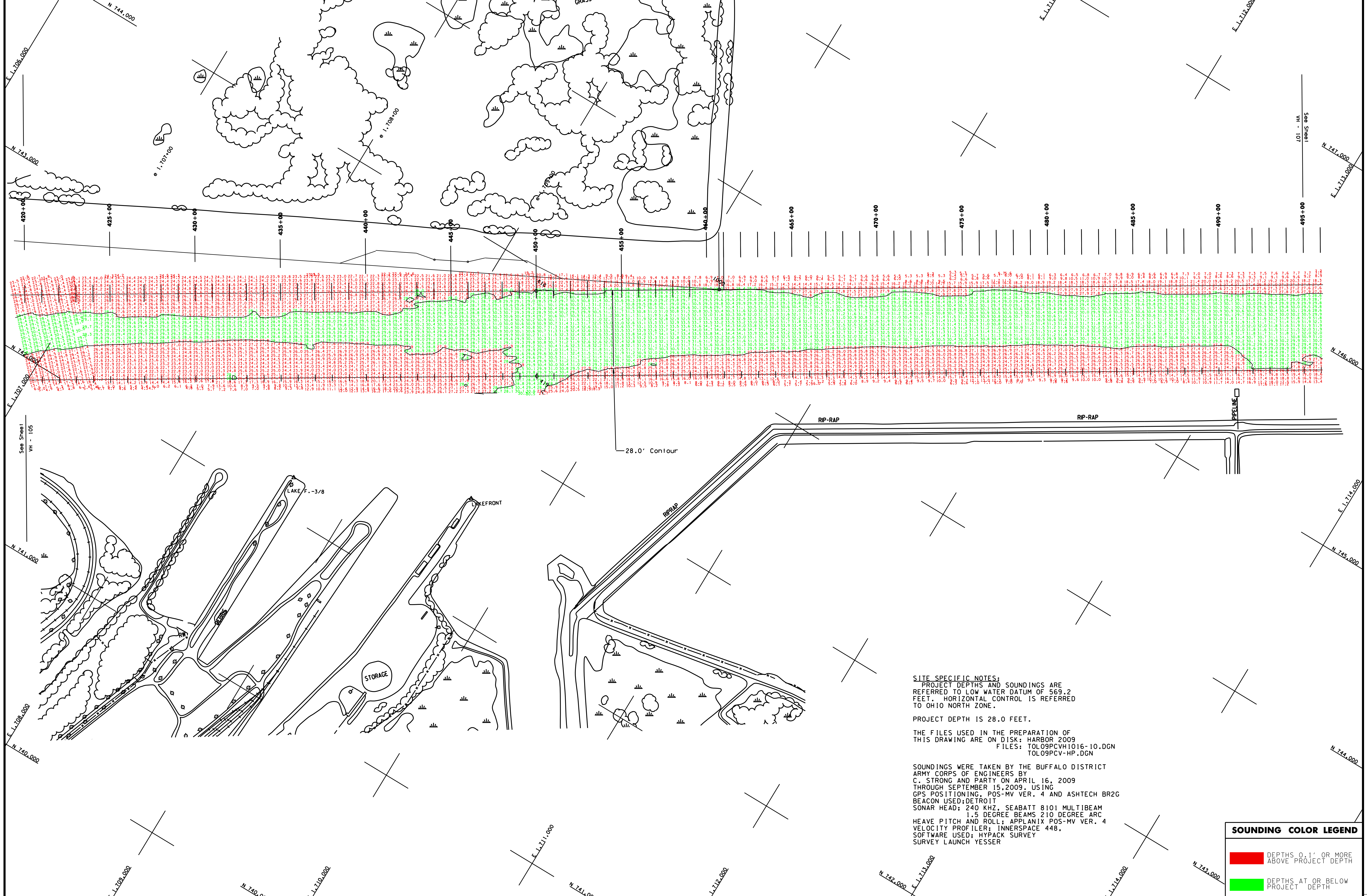
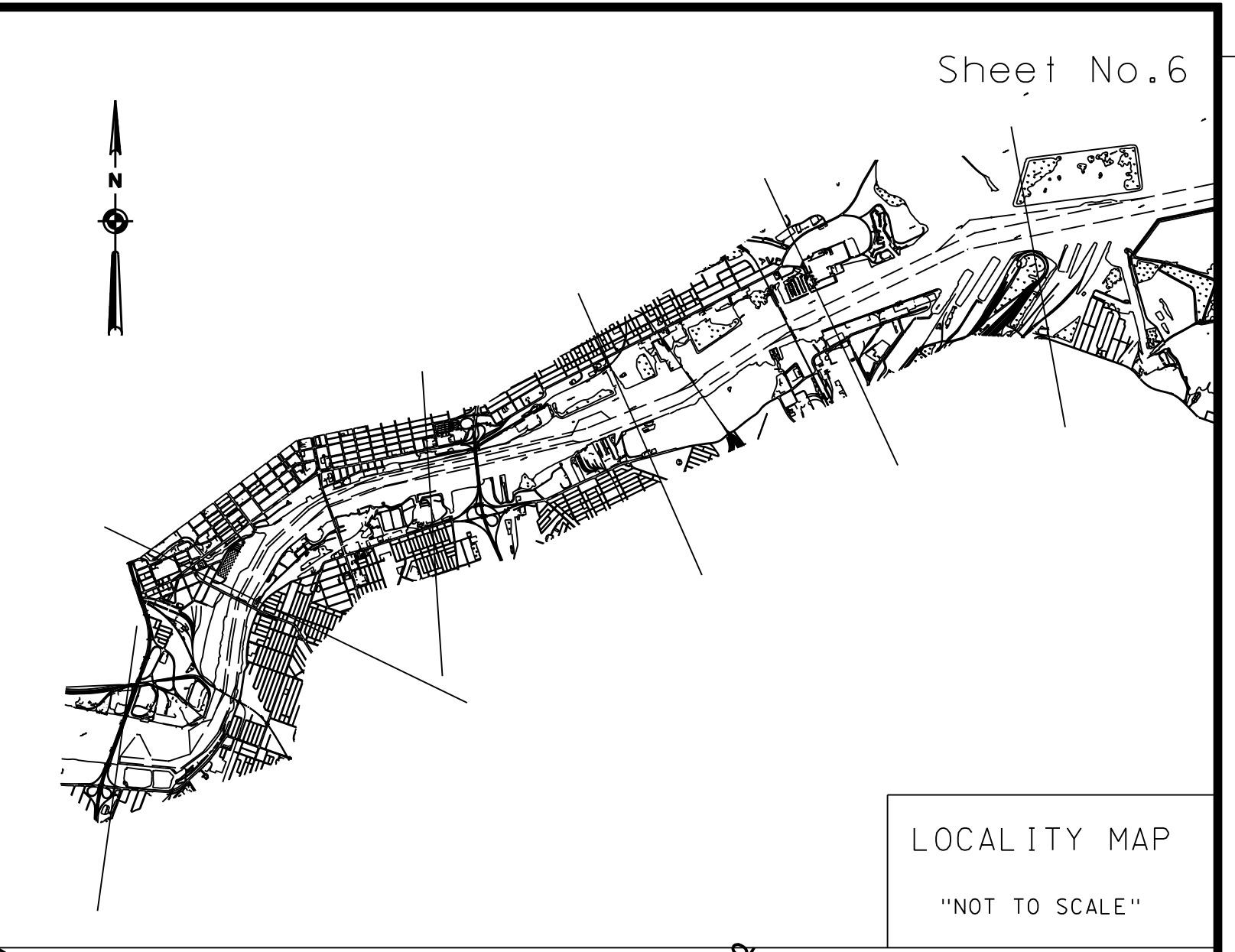
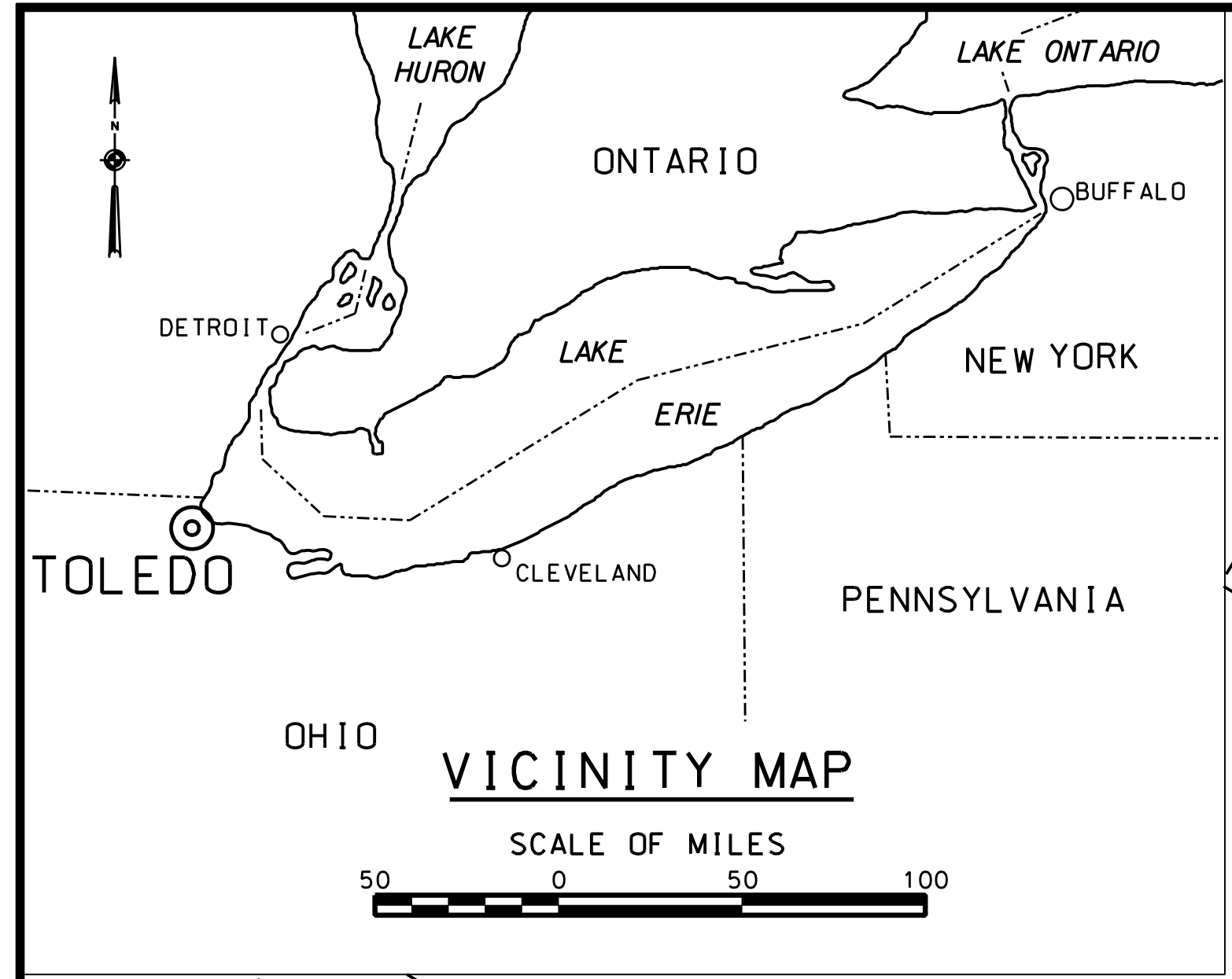
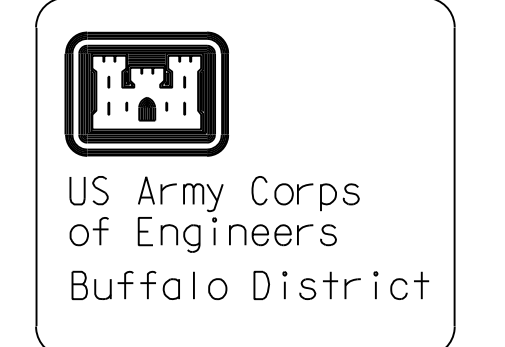


SAFETY PAYS

Sheet No. 6



General Notes
The information depicted on this map represents the results of surveys made on the date indicated and can only be considered as indicating the general condition of the project. Unless otherwise noted on this map, all depths and soundings are in feet and referred to the International Great Lakes Datum 1985 (IGLD 1985) and all horizontal positions are referred to North American Datum 1983 (NAD83). See the Site Specific Notes for details on the survey methods used. The information on this map is for general reference only. This drawing was prepared using a CAD system. Scaling may be distorted.

Drawn by: CDD
Checked by:
Reviewed by:
Chief, Survey Unit
Approver:
Dates:
CHIEF, NYPA Navigation and Maintenance Section

U.S. ARMY ENGINEER DISTRICT
CORPS OF ENGINEERS
BUFFALO, NEW YORK 14207-3199

TOLEDO HARBOR, OHIO
BAY SECTIONS
PROJECT CONDITION SOUNDINGS 2009
SCALE OF FEET
50 0 100 200
SCALE: 1" = 200'

Sheet reference number:
VH - 106
Sheet 5 of 6
09S-TOL-16

SITE SPECIFIC NOTES:
PROJECT DEPTHS AND SOUNDINGS ARE REFERRED TO LOW-WATER DATUM OF 569.2 FEET. HORIZONTAL CONTROL IS REFERRED TO OHIO NORTH ZONE.
PROJECT DEPTH IS 28.0 FEET.
THE FILES USED IN THE PREPARATION OF THIS DRAWING ARE ON DISK: HARBOR 2009
FILES: TOL09PCV1016-10.DGN
TOL09PCV-HP.DGN

SOUNDINGS WERE TAKEN BY THE BUFFALO DISTRICT ARMY CORPS OF ENGINEERS BY C. STRONG AND PARTY ON APRIL 16, 2009 THROUGH SEPTEMBER 15, 2009. USING GPS POSITIONING, POS-MV VER. 4 AND ASYTECH BR2G BEACON USED; DETROIT SONAR HEAD; 240 KHZ, SEABATT 8101 MULTIBEAM 1.5 DEGREE BEAMS 210 DEGREE ARC HEAVE PITCH AND ROLL; APPLANIX POS-MV VER. 4 VELOCITY PROFILER; INNSPACE 448. SOFTWARE USED: HYPACK SURVEY SURVEY LAUNCH YESSER

SOUNDING COLOR LEGEND

Red	DEPTHS 0.1' OR MORE ABOVE PROJECT DEPTH
Green	DEPTHS AT OR BELOW PROJECT DEPTH

SUPPORT VALUE ENGINEERING - IT PAYS