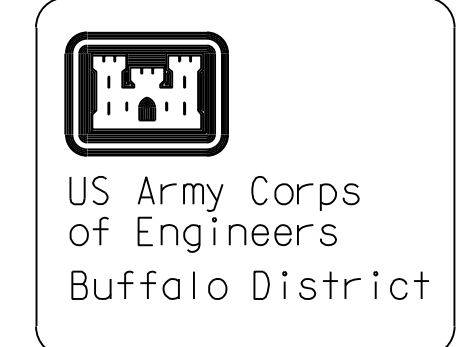
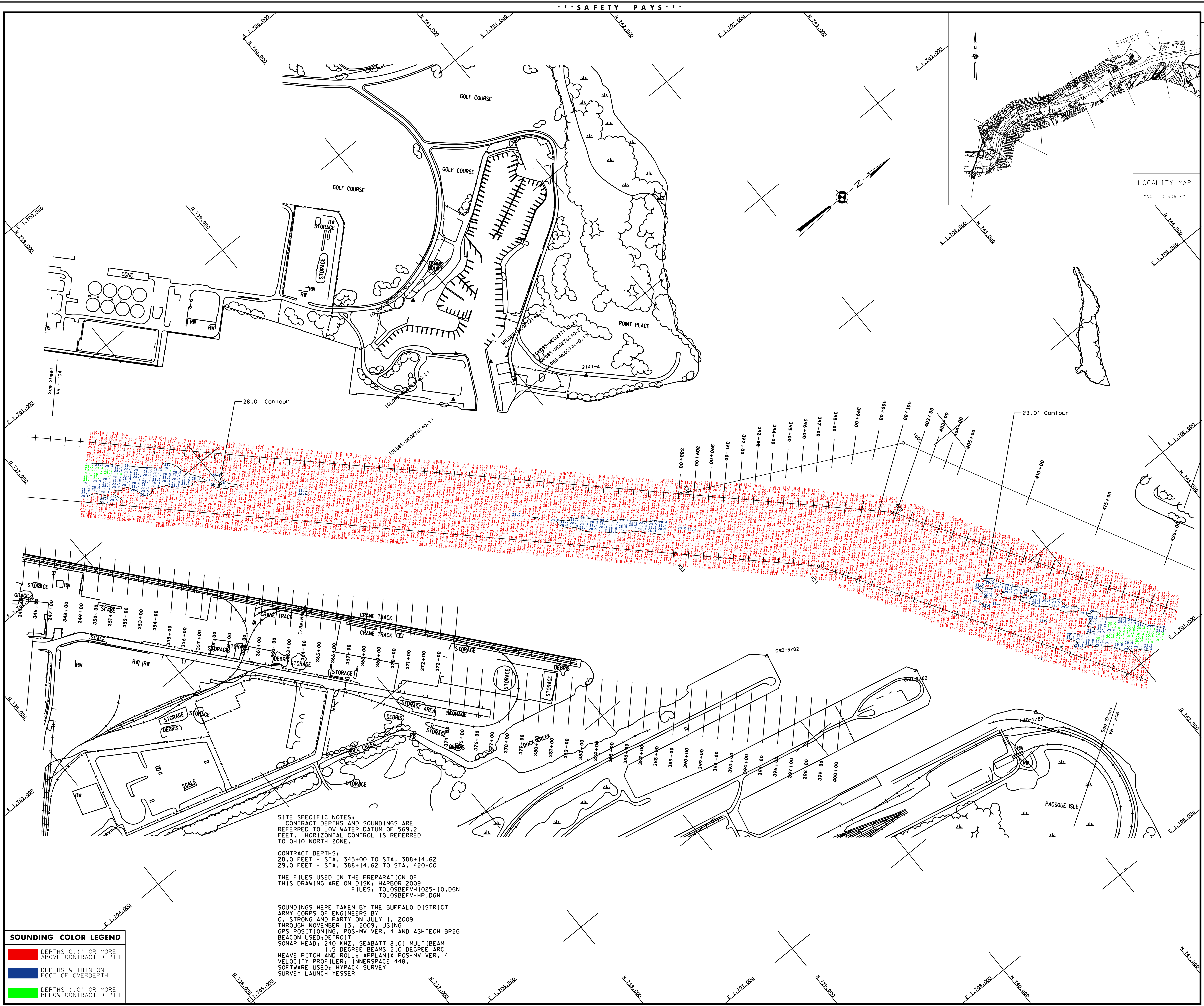
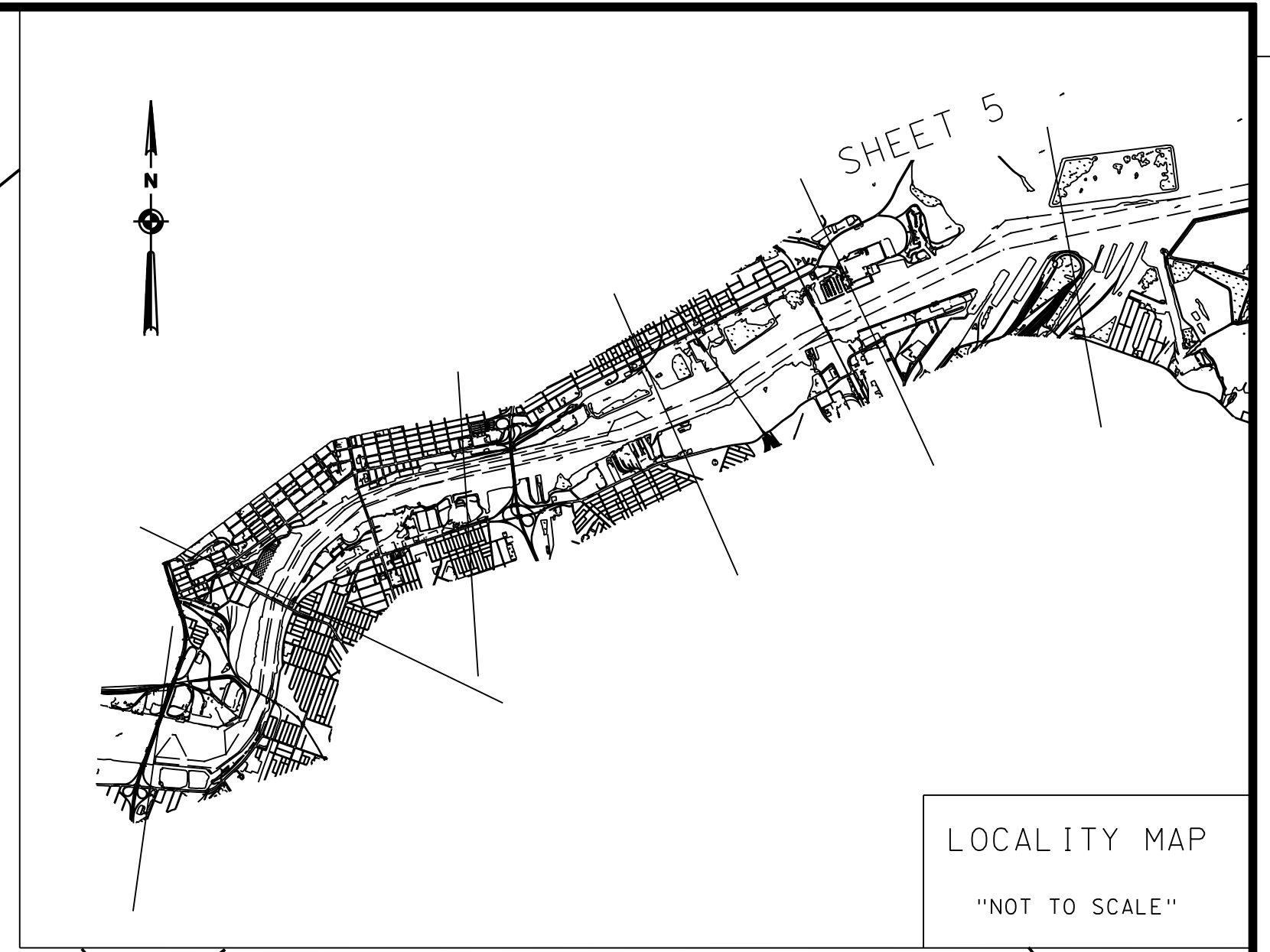


*** SAFETY PAYS ***



GENERAL NOTES

The information depicted on this map represents the results of surveys made on the date indicated and can only be considered as indicating the general condition of that date, unless otherwise noted on this map. All depths and soundings are in feet and referred to the Invention Great Lakes Datum 1985 (IGLD 1985) and all horizontal positions are referred to North American Datum 1983 (NAD83). See the Site Specific Notes for more information on the survey methods used. The information on this map is for general reference only and is not to be used for navigation. This drawing was prepared using a CAD system. Scaling may be distorted.



SITE SPECIFIC NOTES:
 CONTRACT DEPTHS AND SOUNDINGS ARE REFERRED TO LOW WATER DATUM OF 569.2 FEET. HORIZONTAL CONTROL IS REFERRED TO OHIO NORTH ZONE.

CONTRACT DEPTHS:
 28.0 FEET - STA. 345+00 TO STA. 388+14.62
 29.0 FEET - STA. 388+14.62 TO STA. 420+00

THE FILES USED IN THE PREPARATION OF THIS DRAWING ARE ON DISK: HARBOR 2009
 FILES: TOL09BEFVH1025-10.DGN
 TOL09BEFV-HP.DGN

SOUNDINGS WERE TAKEN BY THE BUFFALO DISTRICT ARMY CORPS OF ENGINEERS BY C. STRONG AND PARTY ON JULY 1, 2009 THROUGH NOVEMBER 13, 2009, USING OPS POSITIONING, POS-MV VER. 4 AND ASHTECH BR2G BEACON USED: DETROIT
 SONAR HEAD: 240 KHZ, SEABATT 8101 MULTIBEAM
 HEAVE PITCH AND ROLL: APPLANIX POS-MV VER. 4
 VELOCITY PROFILER: INNERSPACE 448.
 SOFTWARE USED: HYPACK SURVEY SURVEY LAUNCH YESSER

SOUNDING COLOR LEGEND

	DEPTHS 0.1' OR MORE ABOVE CONTRACT DEPTH
	DEPTHS WITHIN ONE FOOT OF OVERDEPTH
	DEPTHS 1.0' OR MORE BELOW CONTRACT DEPTH

Drawn by:	CRD
Checked by:	
Reviewed by:	
Chief, Survey Unit:	
Approver:	
Date:	
CHIEF, NYPA Navigation and Maintenance Section	

U.S. ARMY ENGINEER DISTRICT
 CORPS OF ENGINEERS
 BUFFALO, NEW YORK 14207-3199

TOLEDO HARBOR, OHIO
 RIVER SECTIONS
 BEFORE CONTRACT DREDGING SOUNDINGS 2009
 SCALE OF FEET
 50 TO 100 = 200'
 SCALE: 1" = 200'

Sheet reference number:
VH - 205
 Sheet 1 of 3
09S-TOL-25

*** SUPPORT VALUE ENGINEERING - IT PAYS ***