

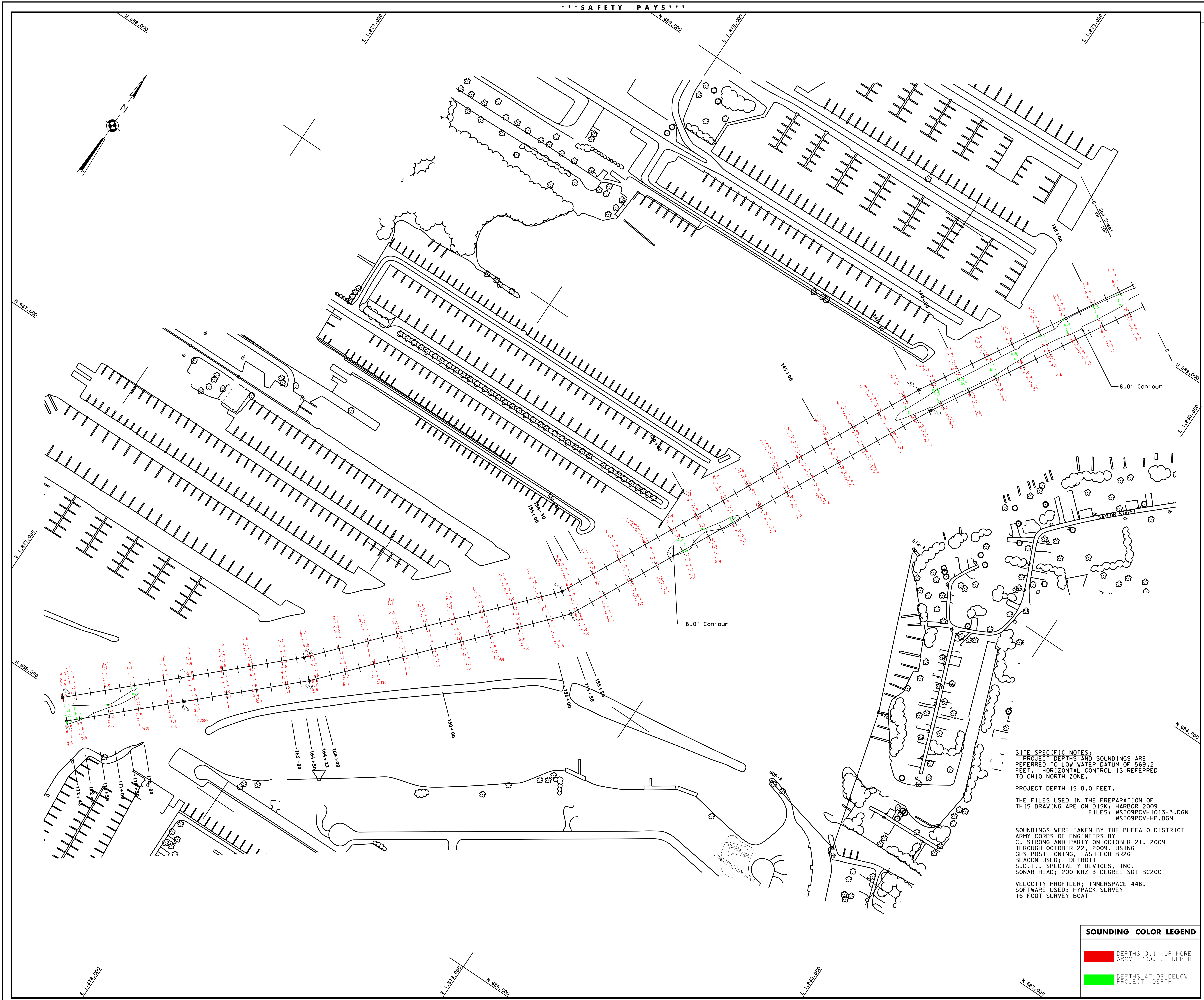
General Notes: The information depicted on this map represents the results of surveys made on the date indicated and can only be considered as indicating the general condition of their files. Unless otherwise noted on this map, all depths and soundings are in feet and referred to the International Great Lakes Datum 1985 (IGLD 1985) and all horizontal positions are referred to the International Great Lakes Datum 1985 (IGLD 1985). See the Site Specific Notes for details on the use of this map. Point to map browser to http://www.usace.army.mil/infocenter/cadp/infocenter/cadp.html. This drawing was prepared using a CAD system. Scoping may be disturbed.

Drawn by: CAD
Checked by:
Reviewed by:
Approved: Chief, Survey Unit
Dates:
Chief, NYPA Navigation and Maintenance Section

U.S. ARMY ENGINEER DISTRICT
CORPS OF ENGINEERS
BUFFALO, NEW YORK 14207-3199

WEST HARBOR, OHIO
PROJECT CONDITION SOUNDINGS 2009
SCALE OF FEET
25 50 100
SCALE: 1" = 100'

Sheet reference number:
VH - 103
Sheet 3 of 3
09S-WST-13



SITE SPECIFIC NOTES:
PROJECT DEPTHS AND SOUNDINGS ARE REFERRED TO LOW WATER DATUM OF 569.2 FEET. HORIZONTAL CONTROL IS REFERRED TO OHIO NORTH ZONE.
PROJECT DEPTH IS 8.0 FEET.
THE FILES USED IN THE PREPARATION OF THIS DRAWING ARE ON DISK: HARBOR 2009
FILES: WST09PCVH1013-3.DGN
WST09PCV-HP.DGN
SOUNDINGS WERE TAKEN BY THE BUFFALO DISTRICT ARMY CORPS OF ENGINEERS BY C. STRONG AND PARTY ON OCTOBER 21, 2009 THROUGH OCTOBER 22, 2009, USING GPS POSITIONING, ASHTECH BR2C BEACON USED; DETROIT S.D.I., SPECIALTY DEVICES, INC. SONAR HEAD; 200 KHZ 3 DEGREE SD1 BC200
VELOCITY PROFILER; INNERSPACE 448. SOFTWARE USED; HYPACK SURVEY 16 FOOT SURVEY BOAT

SOUNDING COLOR LEGEND

Red	DEPTHS 0.1' OR MORE ABOVE PROJECT DEPTH
Green	DEPTHS AT OR BELOW PROJECT DEPTH