

PREPARED FOR: USACE

DATE: 11-Dec-2015

DRAWN BY: [Redacted]

CHK'D BY: [Redacted]

APP'D BY:

NOTES AND SOURCES:

Figure modified from Figure ES-1 of the Former Harshaw Chemical Company Site Feasibility Study Report (SAIC, 2012).



U.S. ARMY ENGINEER DISTRICT
CORPS OF ENGINEERS
BUFFALO, NY





Legend

- Fenceline
- Building G-1
- Geophysical Survey Boundary
- Debris Staging and Laydown Area
- Office Trailer and Laydown Area
- Truck Haul Route (Through Mid-April 2015)
- ➔ Truck Haul Route (Mid-April 2015 through project completion)

Figure 2-2

Building G-1 Project Site Layout

Project Construction Report

Building G-1 Deconstruction and Groundwater Investigation



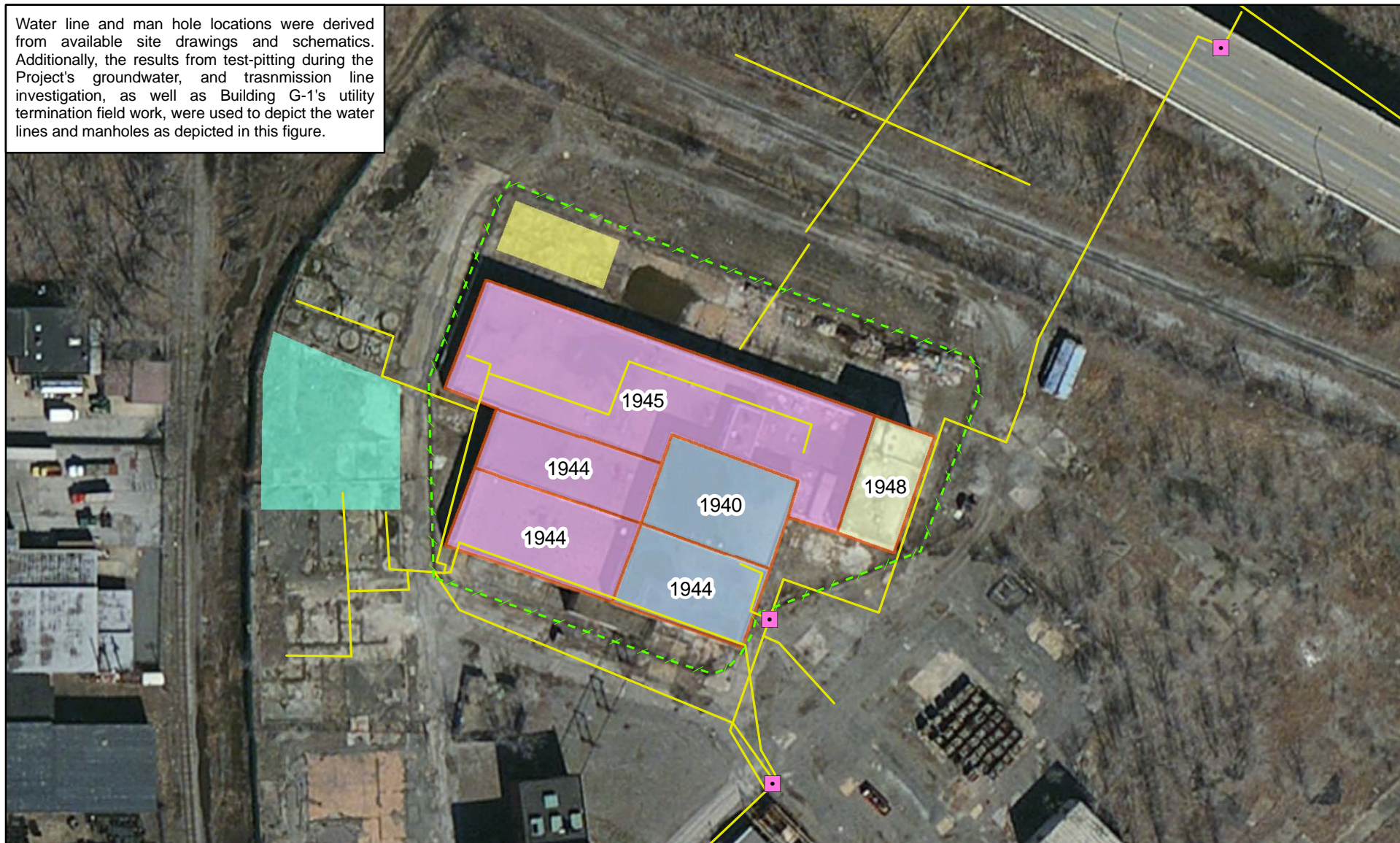
1 inch = 200 feet

Projection/Coordinate System:
UTM Z17N, WGS84



0 100 200 400
Feet

Water line and man hole locations were derived from available site drawings and schematics. Additionally, the results from test-pitting during the Project's groundwater, and transmission line investigation, as well as Building G-1's utility termination field work, were used to depict the water lines and manholes as depicted in this figure.



Legend

- | | |
|---------------------------------|--------------------------|
| Water-Sewer Man Hole | Number of Stories |
| Building G-1 Water Lines | 1 Story |
| Fenceline | 2 Stories |
| Debris Staging and Laydown Area | 3 Stories |
| Office Trailer and Laydown Area | |

Figure 2-3

Building G-1

Project Construction Report

Building G-1 Deconstruction and Groundwater Investigation

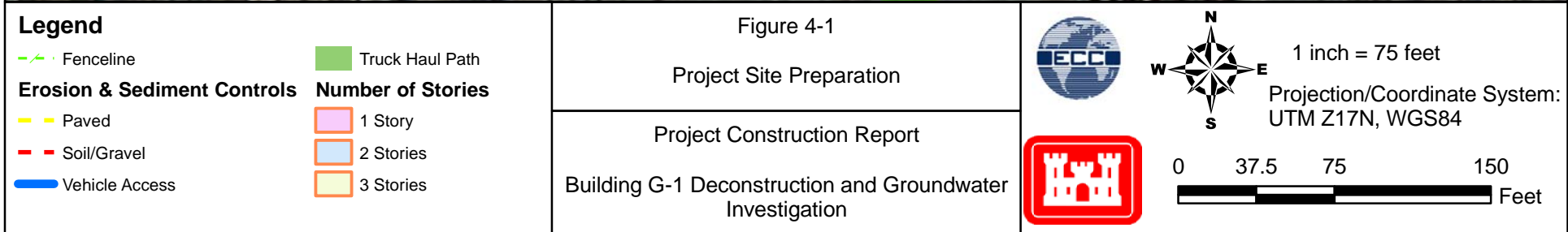


1 inch = 100 feet

Projection/Coordinate System:
UTM Z17N, WGS84



0 50 100 200
Feet



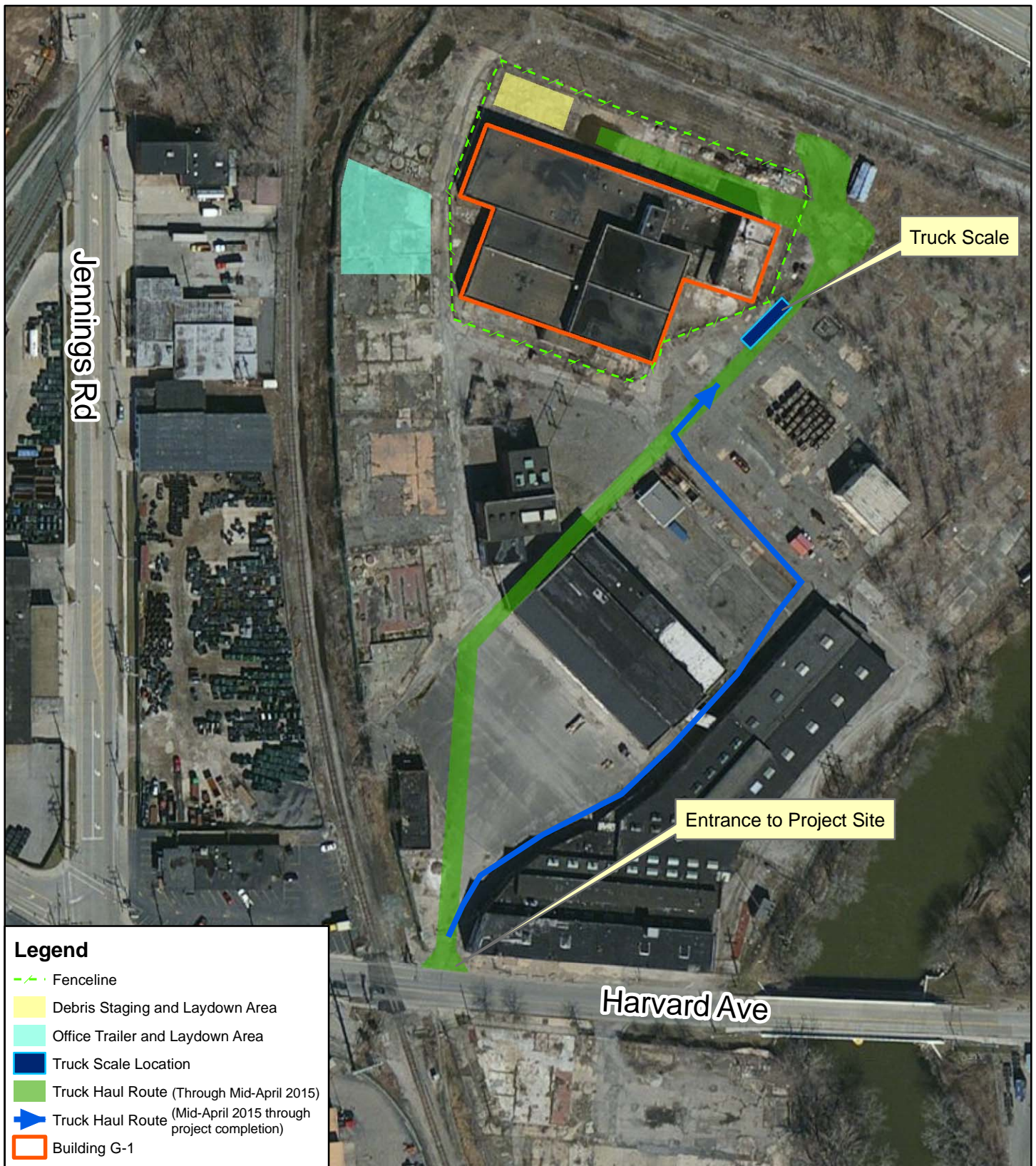


Figure 5-1

Truck Haul Route

Project Construction Report

Building G-1 Deconstruction and Groundwater Investigation



1 inch = 150 feet

Projection/Coordinate System:
UTM Z17N, WGS84

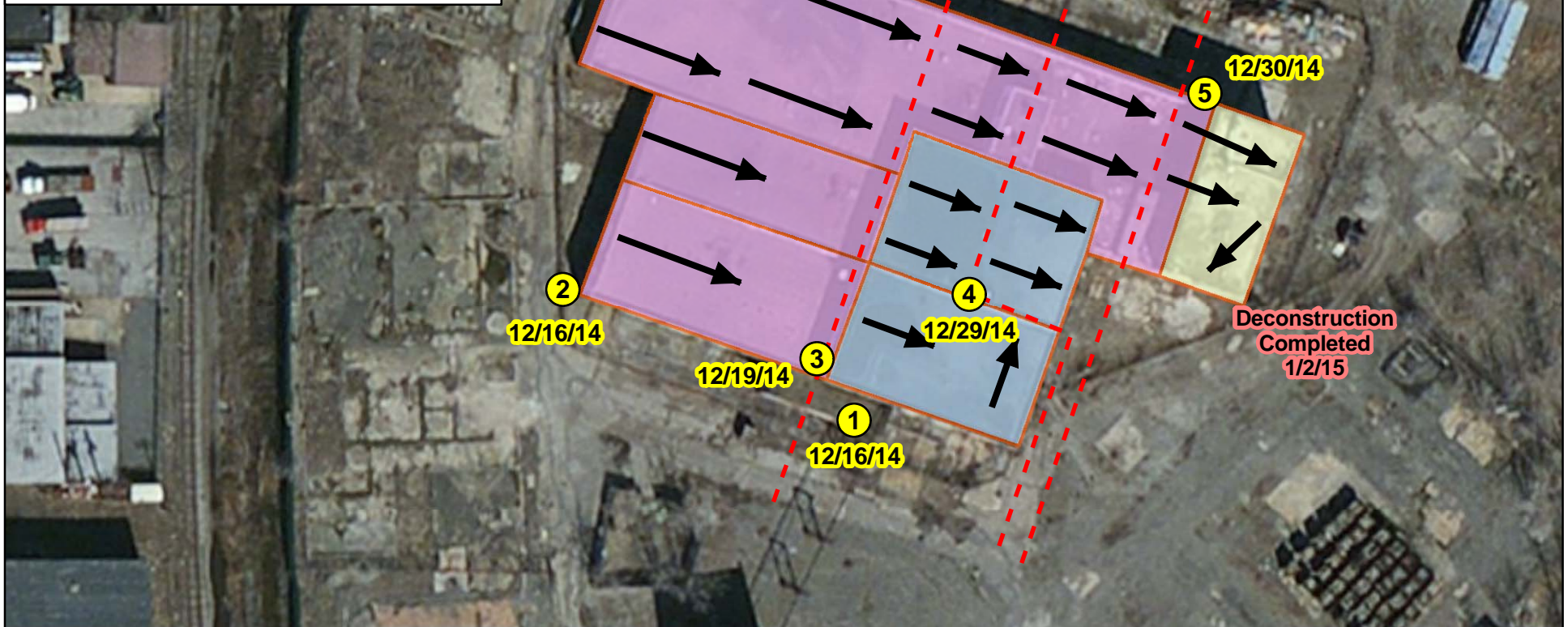


0 75 150 300
Feet

Yellow circles illustrate the approximate location where the deconstruction began during the date displayed next to the circle.

Black arrows indicate the general direction and track that the heavy machinery proceeded during deconstruction.

The red-dashed lines illustrate the where deconstruction stopped progressing farther eastward. Deconstruction proceeded west-to-east, from the outside-in, towards this line. Deconstruction continued eastward of the red-dashed line once the previously deconstructed area's debris was staged, allowing the excavator to access and continue progress eastward.



- Legend**
- Number of Stories**
- 1 Story
 - 2 Stories
 - 3 Stories

Figure 5-2

Building G-1 Deconstruction Progress Sequence

Project Construction Report

Building G-1 Deconstruction and Groundwater Investigation



1 inch = 75 feet

Projection/Coordinate System:
UTM Z17N, WGS84



0 37.5 75 150
Feet

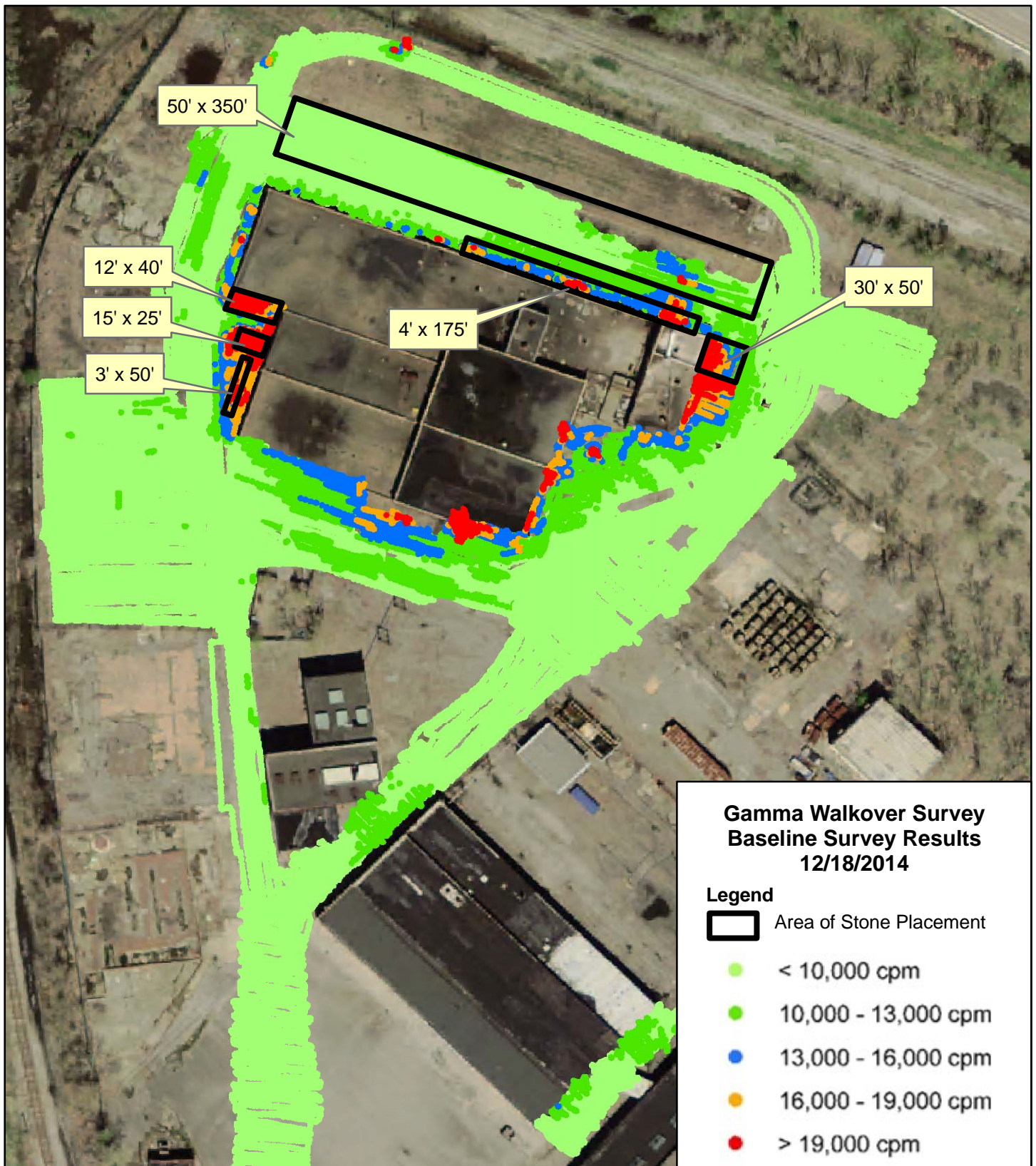
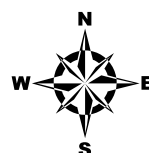


Figure 6-1

Gamma Walkover Survey

Project Construction Report

Building G-1 Deconstruction and Groundwater
Investigation



1 inch = 100 feet

Projection/Coordinate System:
UTM Z17N, WGS84

0 50 100 200
Feet

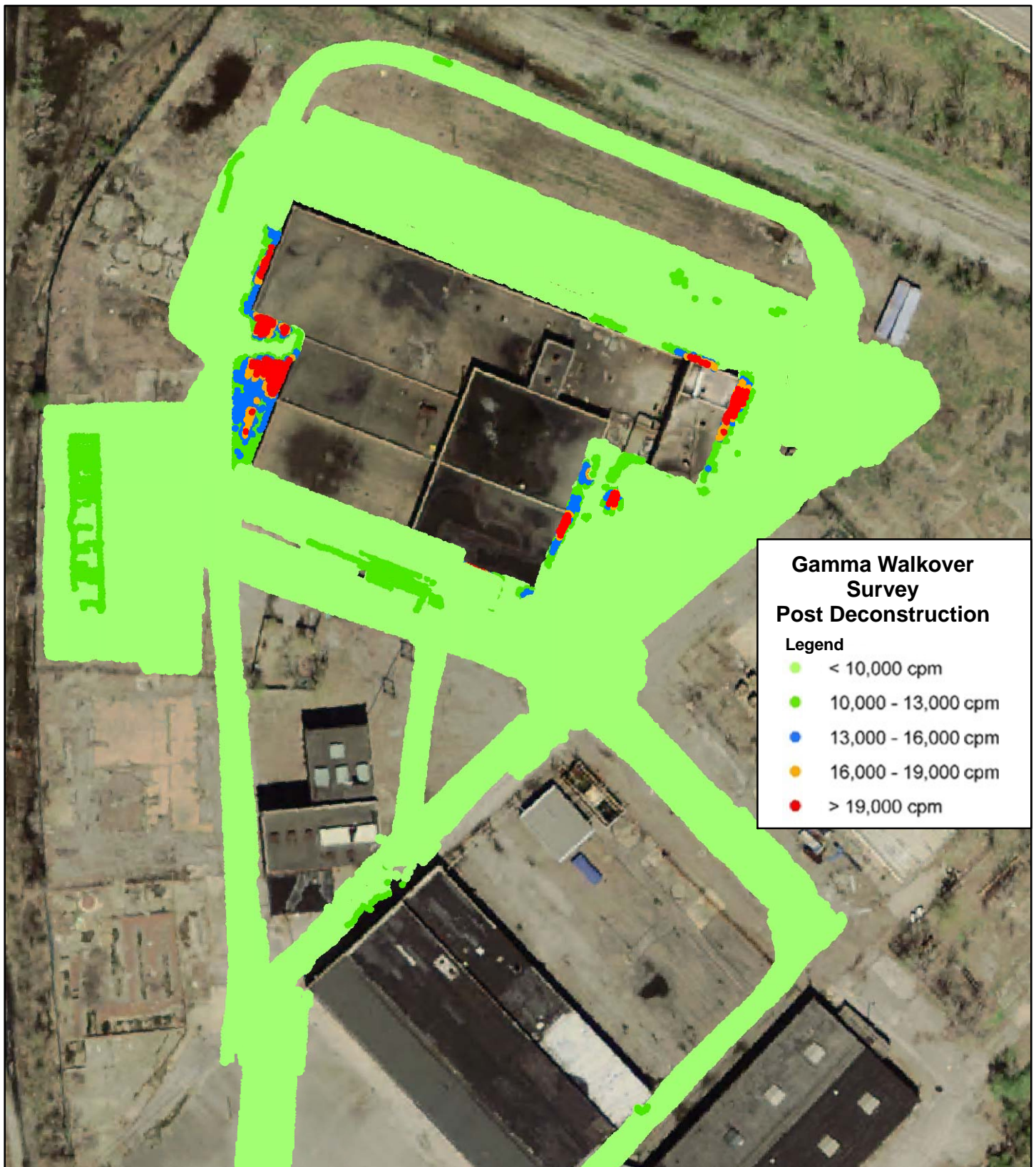
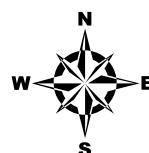


Figure 7-1
Gamma Walkover Survey
Post Deconstruction

Project Construction Report

Building G-1 Deconstruction and Groundwater
Investigation



1 inch = 100 feet

Projection/Coordinate System:
UTM Z17N, WGS84

0 50 100 200
Feet