

In the following photos, the orange line is the Occidental property boundary; the pink lines are other parcel boundaries.

1938 photo:



The 1944 Aerial shows “dark spots” to the north and south of the east-west ditch:

Identify from: anomalies

anomalies  
pits, possible

Location: 1,039,242.000 1,176,408.028 Feet

Field	Value
ID	63
DESCR	pits, possible
REMARKS	sbc (possible); features appear dark-toned against the background of snow.
TextYear	1944
Join_Cou_1	1
PIN	60.00-3-5
TEC_SBCInv	Yes
PrimaryTEC	SBC
xcent	1039247.16614
ycent	1176394.117032

Identified 1 Feature

These notes are from our Anomalies GIS layer that contains TEC report notes. The notes refer to the rectangular shaped anomaly identified in the northern pond area. Field “TextYear” indicates the photograph year being evaluated.

northern pond area

linear feature thought to be east-west trending ditch

southern pond area

1951 photo:



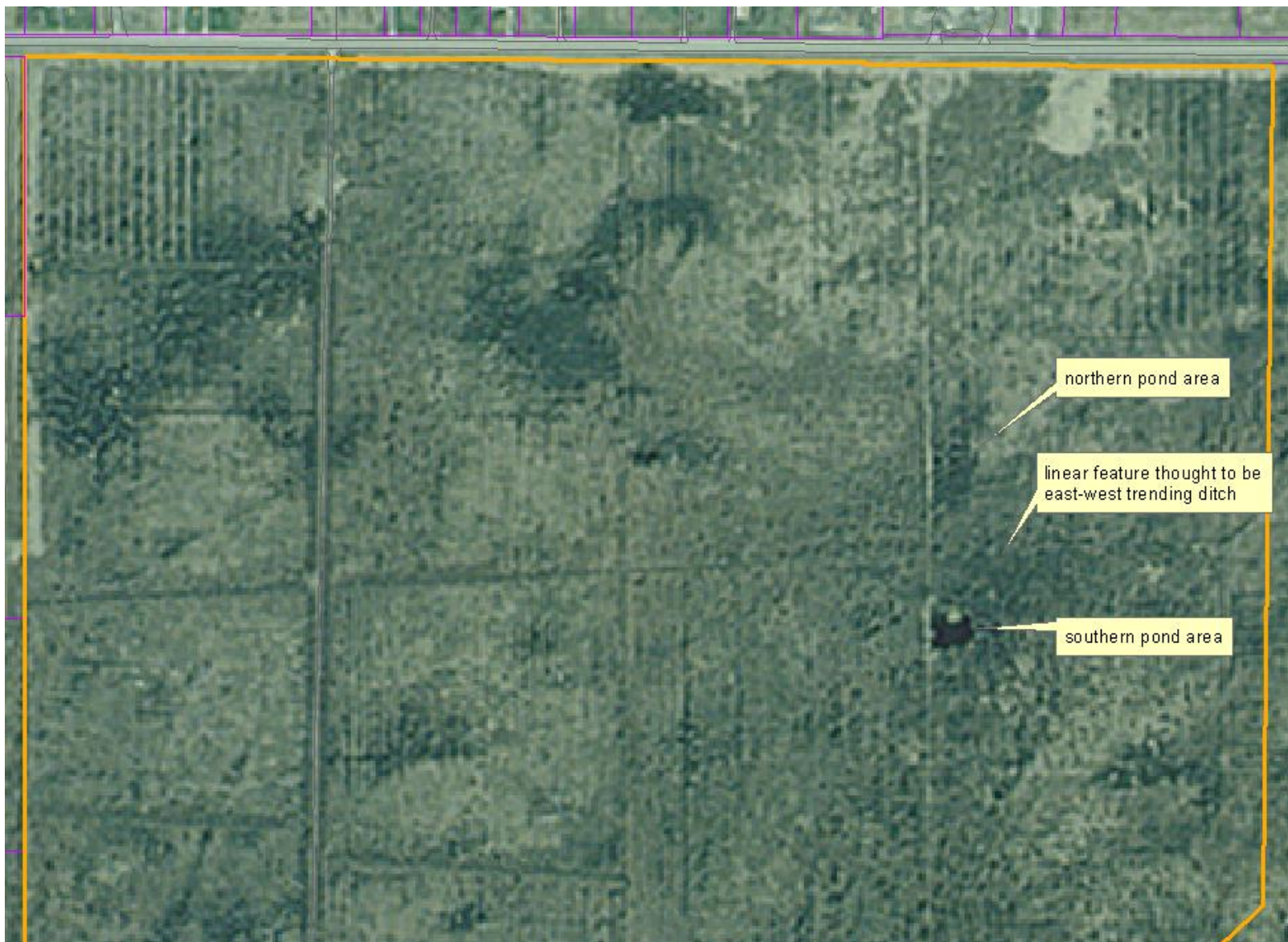
1963 photo:



1972:



1997 photo, this is the photo used in Figure 9-1.1 of the Phase II RI:



2005 photo:



Aerial accessed from Mapquest on Nov. 17, 2010. Note the location of the hatchery and the development just east of the labels in the 2005 photo to help orient yourself with this 2010 photo.

