



VICINITY MAP  
"NOT TO SCALE"

SOUNDING COLOR LEGEND

- DEPTHS 0.1' OR MORE ABOVE PROJECT DEPTH
- DEPTHS AT OR BELOW PROJECT DEPTH
- XX.X PROJECT DEPTH

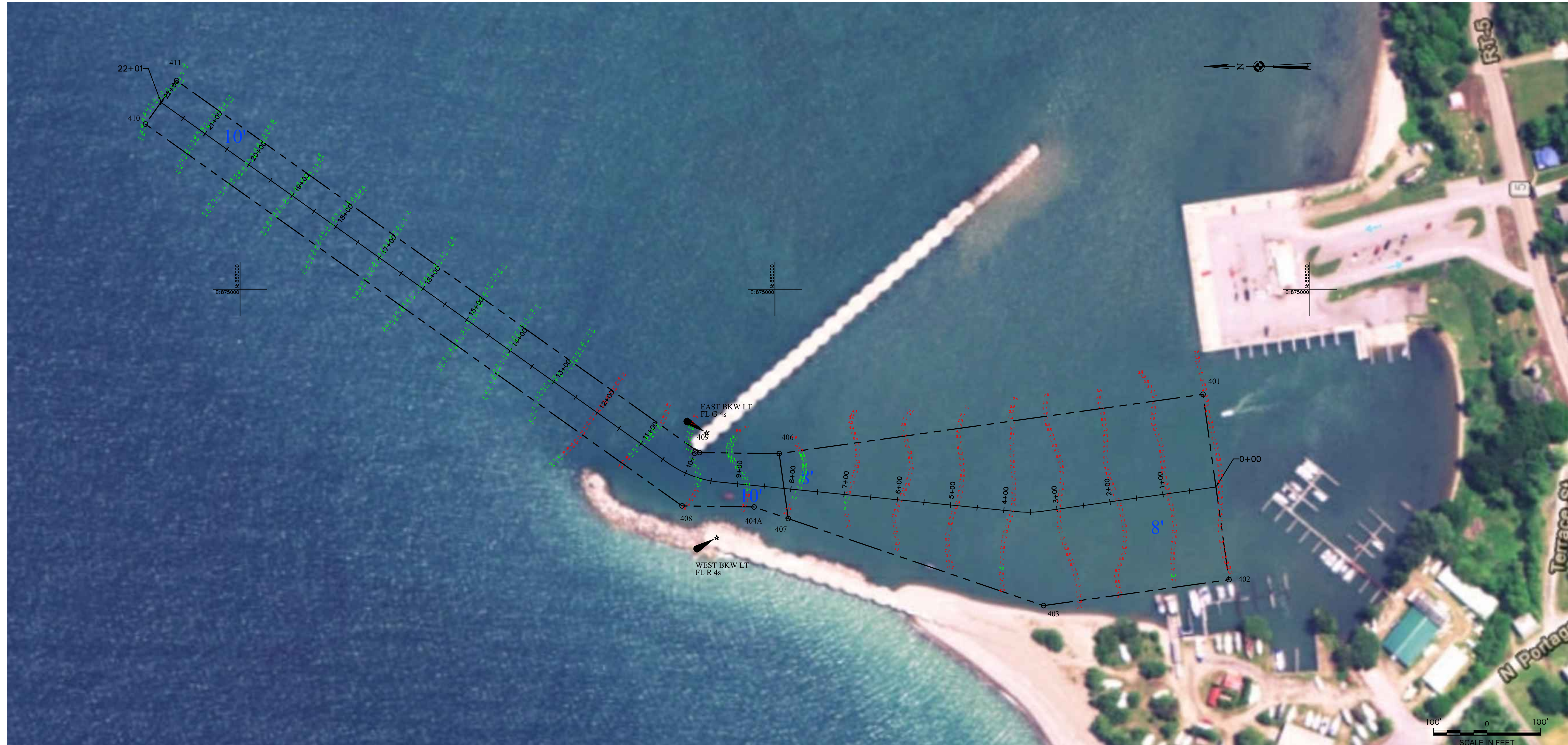
LEGEND OF SYMBOLS

17+00 (NEW), 17+00 (OLD)	CHANNEL STATIONING
o 417	CHANNEL CORNER
o H.L.F.	HARBOR LINE CORNER
---	FEDERAL CHANNEL
---	HARBOR LINE
---	SUBMARINE CABLE
⊕	CAN BUOY
⊕	NUN BUOY
⊕	LIGHTED BUOY
⊕	FIXED LIGHT
⊕	LIGHT HOUSE
W	LIGHT COLOR WHITE
R	LIGHT COLOR RED
G	LIGHT COLOR GREEN
FL	FLASHING LIGHT
F	FIXED LIGHT
Oc	OCCULTING LIGHT
Iso	EQUAL INTERVAL
AL	ALTERNATING
Q	QUICK (FLASHING)
S	LIGHT CYCLE SECONDS

SITE SPECIFIC NOTES:

- PROJECT DEPTHS AND SOUNDINGS ARE REFERRED TO LOW WATER DATUM OF 569.2 FEET IGLD 1985.
  - HORIZONTAL CONTROL IS REFERRED TO NORTH AMERICAN DATUM 1983 NEW YORK STATE PLANE COORDINATE SYSTEM--WEST ZONE.
  - PROJECT DEPTH IS AS NOTED BELOW LOW WATER DATUM.
- SOUNDINGS WERE TAKEN BY THE BUFFALO DISTRICT ARMY CORPS OF ENGINEERS BY D. DELL AND PARTY ON JULY 22, 2019 USING GPS POSITIONING, TRIMBLE R10 W/ RTK TIDES  
SONAR HEAD: 200 KHZ, ODOM MKIII  
3 DEGREE BEAM
- HEADING SENSOR:  
VELOCITY PROFILER; SONTEK CASTAWAY  
HYPACK SURVEY SOFTWARE  
SURVEY LAUNCH "SMOKERCRAFT"
- THE SOUNDING INFORMATION DEPICTED ON THE MAP REPRESENTS THE RESULTS OF SURVEYS MADE ON THE DATE INDICATED AND CAN ONLY BE CONSIDERED AS INDICATING THE GENERAL CONDITION AT THAT TIME.
  - AERIAL IMAGERY WAS OBTAINED THROUGH THE NEW YORK STATE GIS CLEARINGHOUSE.
  - THIS SURVEY WAS PREPARED IN ACCORDANCE WITH THE STANDARDS OUTLINED IN CORPS OF ENGINEERS HYDROGRAPHIC SURVEY MANUAL EM 1110-2-1003.

POINT	NORTHING	EASTING
410	857176.92	875308.62
411	857118.94	875390.09
408	856173.75	874594.70
409	856141.25	874694.31
404A	856039.29	874592.67
406	855992.23	874692.48
407	855975.22	874570.82
403	855498.10	874408.17
401	855199.93	874803.26
402	855151.47	874456.63



**US Army Corps of Engineers Buffalo District**

**\*\* COPY OF SIGNED ORIGINAL \*\***

Drawn by: KPL  
Checked by: ACK  
Reviewed by: Roman H. Figler III PLS  
Chief, Survey Section  
Approved by: Adam W. Hamm, PE  
Chief, NY/PA Navigation and Maintenance Section

U.S. ARMY ENGINEER DISTRICT  
CORPS OF ENGINEERS  
BUFFALO, NEW YORK 14207-3199

BARCELONA HARBOR, NY  
**PROJECT CONDITIONS SOUNDINGS 2019**  
SCALE: 1"=100'

Sheet reference number  
**VH-101**  
Sheet 1 of 1

To download an electronic version of this map, print a web browser to file://www.usace.army.mil/Library/MapandChart.aspx

D:\Survey Drive Projects\NY-Barcelona Harbor\Drawing Files (Cud)\2019\Bar2017-V-HP-100.dwg