

VICINITY MAP
"NOT TO SCALE"

SOUNDING COLOR LEGEND

- █ DEPTHS 0.1' OR MORE ABOVE PROJECT DEPTH
- █ DEPTHS AT OR BELOW PROJECT DEPTH
- XX.X PROJECT DEPTH

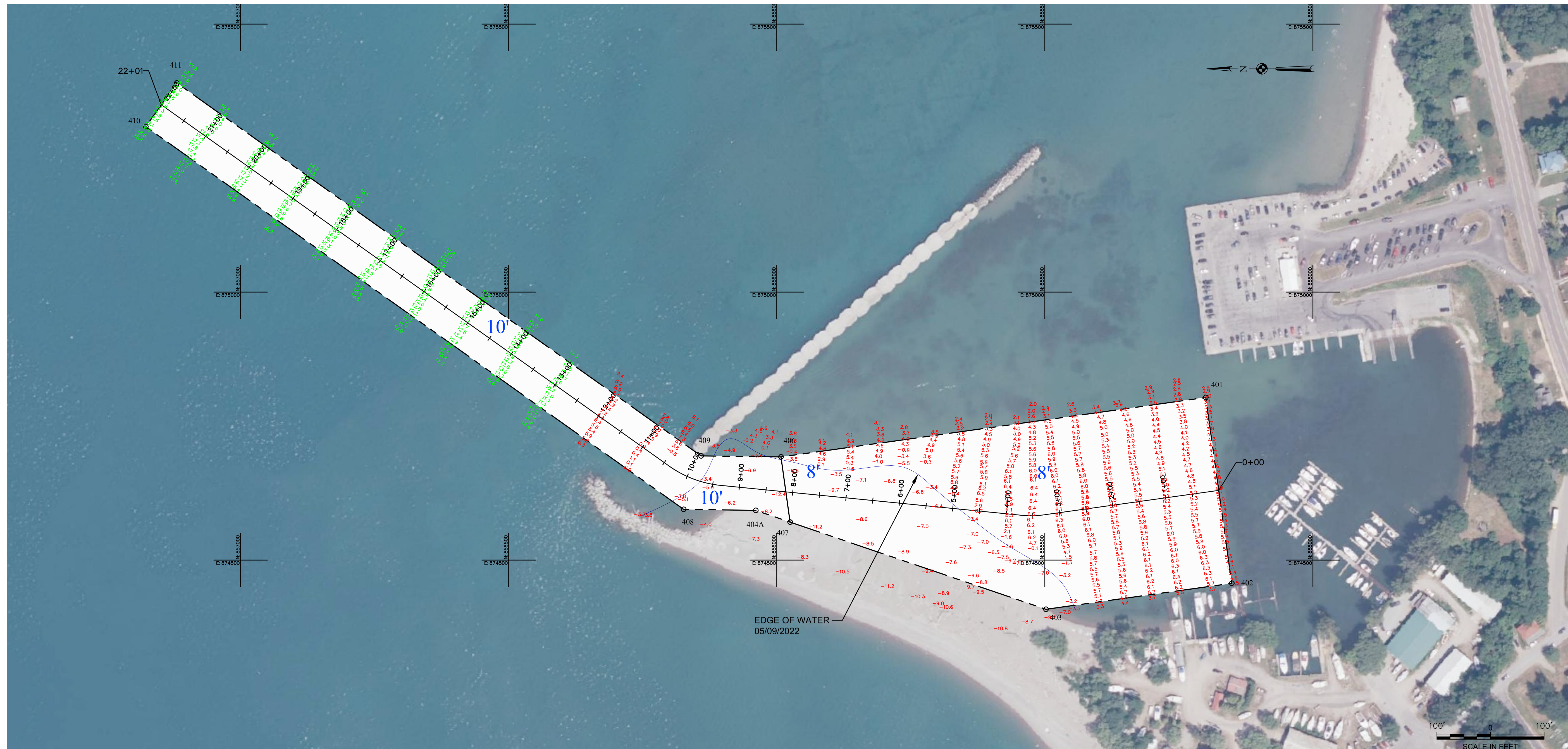
LEGEND OF SYMBOLS

17+00 (NEW), 17+00 (OLD)	CHANNEL STATIONING
o 417	CHANNEL CORNER
⊙ H.L.F.	HARBOR LINE CORNER
---	FEDERAL CHANNEL
---	HARBOR LINE
---	SUBMARINE CABLE
⊕	CAN BUOY
⊖	NUN BUOY
⊙	LIGHTED BUOY
⊙	FIXED LIGHT
⊙	LIGHT HOUSE
W	LIGHT COLOR WHITE
R	LIGHT COLOR RED
G	LIGHT COLOR GREEN
FL	FLASHING LIGHT
F	FIXED LIGHT
Oc	OCCULTING LIGHT
Iso	EQUAL INTERVAL
AL	ALTERNATING
Q	QUICK (FLASHING)
S	LIGHT CYCLE SECONDS

SITE SPECIFIC NOTES:

- PROJECT DEPTHS AND SOUNDINGS ARE REFERRED TO LOW WATER DATUM OF 569.2 FEET IGLD 1985.
- HORIZONTAL CONTROL IS REFERRED TO NORTH AMERICAN DATUM 1983 (2011 ADJUSTMENT) NEW YORK STATE PLANE COORDINATE SYSTEM—WEST ZONE.
- PROJECT DEPTH IS AS NOTED BELOW LOW WATER DATUM.
- SOUNDINGS WERE TAKEN BY THE BUFFALO DISTRICT ARMY CORPS OF ENGINEERS BY D. HENNEBERGER AND PARTY ON MAY 09, 2022 USING:
CORRECTIONS USED: RTK GPS BASE STATION
SONAR HEAD: 200/24 KHZ, CEESCOPE
3 DEGREE BEAM
VELOCITY PROFILER: SONTEK CASTAWAY
HYPACK SURVEY SOFTWARE
SURVEY LAUNCH: LOWE BOAT
- THE SOUNDING INFORMATION DEPICTED ON THE MAP REPRESENTS THE RESULTS OF SURVEYS MADE ON THE DATE INDICATED AND CAN ONLY BE CONSIDERED AS INDICATING THE GENERAL CONDITION AT THAT TIME.
- THIS SURVEY WAS PREPARED IN ACCORDANCE WITH THE STANDARDS OUTLINED IN CORPS OF ENGINEERS HYDROGRAPHIC SURVEY MANUAL EM 1110-2-1003.

POINT	NORTHING	EASTING
410	857176.92	875308.62
411	857118.94	875390.09
408	856173.75	874594.70
409	856141.25	874694.31
404A	856039.29	874592.67
406	855992.23	874692.48
407	855975.22	874570.82
403	855498.10	874408.17
401	855199.93	874803.26
402	855151.47	874456.63



EDGE OF WATER
05/09/2022

US Army Corps of Engineers Buffalo District

Drawn by: KPL
Checked by: ACK
Reviewed by: Roman H. Figler III PLS
Chief, Survey Section
Approved by: Adam W. Hamm
Date: May 11, 2022
Chief, NY/PA Navigation and Maintenance Section
To download an electronic version of this map, print a web browser to <http://www.usace.army.mil/Library/MapInfoChart.aspx>

U.S. ARMY ENGINEER DISTRICT
CORPS OF ENGINEERS
BUFFALO, NEW YORK 14207-3199

BARCELONA HARBOR, NY
PROJECT CONDITIONS SOUNDINGS 2022
SCALE: 1"=100'

Sheet reference number
VH-101
Sheet 1 of 1