



Notice to Navigation Interests

US Army Corps
of Engineers
Buffalo District
1776 Niagara Street
Buffalo, New York 14207-3199

L19-28	August 28, 2019
Notice No.	Date
Waterway	

Lake Erie, New York

LRB-TD-ONS

Condition of Federal Navigation Channel Barcelona Harbor, Barcelona, New York

1. Condition surveys performed within the Federal Navigation Channel at Barcelona Harbor, Barcelona, New York during the month of July 2019 indicate shoaling has reduced depths to those shown on the attached standard tabular form and channel condition drawings.
2. Soundings are in feet and referred to Low Water Datum (LWD) 569.2 feet above Mean Water Level (MWL) at Rimouski, Quebec (International Great Lakes Datum 1985).
3. Vessel operators are advised to use caution when navigating in this area.
4. Copies of the sounding print for Barcelona Harbor, Barcelona, New York consisting of (1) sheet, BAR19PCvh101-1, at a cost of \$2.50 per sheet will be furnished upon receipt of a check in the full amount made payable to: USACE Finance and Accounting. Requests should be addressed to: District Commander, U.S. Army Engineer District, Buffalo, ATTN: NY/PA O&M Office, 1776 Niagara Street, Buffalo, New York 14207, requesting exact number or copies of sheets by file number. A point of contact and phone number must be indicated to facilitate response to the request. To download the same information and other related materials at no cost, simply point your web browser to <http://www.lrb.usace.army.mil/Library/MapsandCharts.aspx> then locate the harbor on the table of harbors and click on the file icon to see or down load the file.
5. Buffalo District's point of contact in reference to the exact number of sheets, file number, and the availability of any later information pertaining to the area is Mr. Roman H. Figler III, PLS, Chief, Survey Section, Buffalo District, who may be contacted by phone at 716-879-4429.

Roman H Figler III

Mr. ROMAN H. FIGLER III, PLS
Chief, Survey Section
NY/PA Operations and Maintenance Office

**REPORT OF CHANNEL CONDITIONS
(FOR CHANNELS LESS THAN 400 FEET WIDE)
(ER-1330-2-316)**

PAGE 2 OF 3 PAGES

DATE August 28, 2019

TO: ACCOMPANY LOCAL NOTICE TO NAVIGATION INTERESTS

FROM: U.S. ARMY CORPS OF ENGINEERS, BUFFALO DISTRICT
1776 NIAGARA STREET, BUFFALO, NY 14207-3199
(716) 879-4292 FAX (716) 879-4356

RIVER/HARBOR NAME AND STATE
BARCELONA HARBOR, BARCELONA, NEW YORK

MINIMUM DEPTHS IN CHANNEL ENTERING FROM SEAWARD

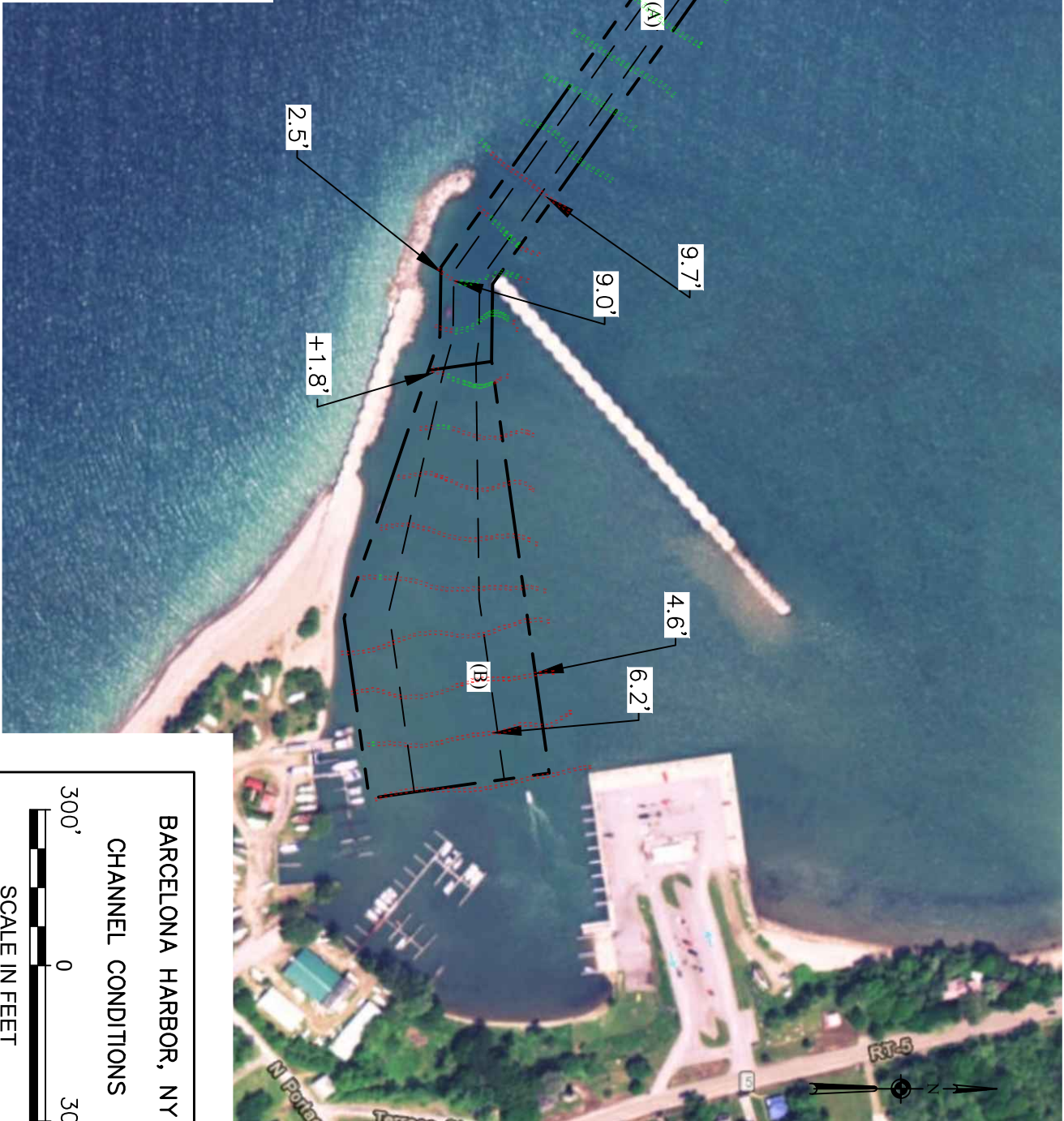
NAME OF CHANNEL	DATE OF SURVEY	AUTHORIZED PROJECT			LEFT OUTSIDE QUARTER (feet)	MIDDLE HALF (feet)	RIGHT OUTSIDE QUARTER (feet)
		WIDTH (feet)	LENGTH (feet)	DEPTH (feet)			
(A) ENTRANCE CHANNEL.	July 2019	100	500 (a)	10	9.7	9.0	2.5
B) HARBOR BASIN	July 2019	125-350 (b)	800	8	4.6	6.2	+1.8

FOOT NOTE:

REMARKS: (a) LENGTH VARIES DEPENDING ON THE LOCATION OF THE 10 FOOT CONTOUR IN LAKE ERIE.
(+) DEPTHS SHOWN WITH A + SIGN INDICATE THE EXISTING MINIMUM DEPTHS ARE SHALLOWER THAN THE 0.0' GAGE LWD.
(b) IRREGULARLY SHAPED, SEE PROJECT CONDITION DRAWINGS.

D:\Survey Drive Projects\NY-Barcelona Harbor\Drawing Files (Cadd)\2019\Bar2017-V--HP-100.dwg

LEGEND	
—XX.X	MINIMUM DEPTH LOCATION
■	DEPTHS 0.1' OR MORE ABOVE PROJECT DEPTH
■	DEPTHS AT OR BELOW PROJECT DEPTH



BARCELONA HARBOR, NY
CHANNEL CONDITIONS

SCALE IN FEET

CORPS OF ENGINEERS, BUFFALO, N. Y.