

VICINITY MAP
"NOT TO SCALE"

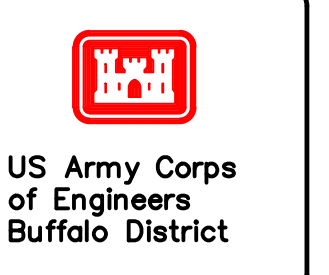
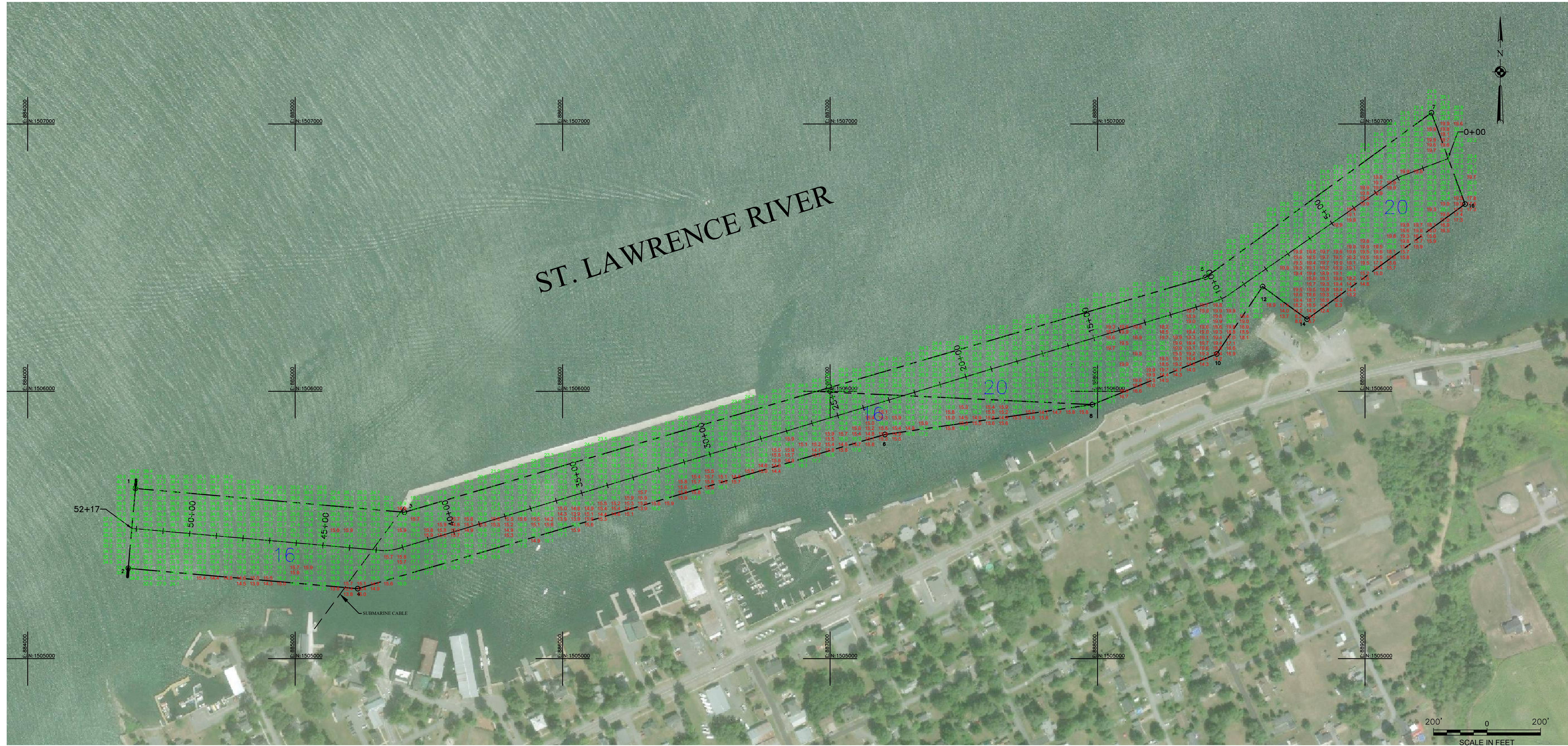
SOUNDING COLOR LEGEND	
	DEPTHS 0.1' OR MORE ABOVE PROJECT DEPTH
	DEPTHS AT OR BELOW PROJECT DEPTH
XX.X	PROJECT DEPTH

LEGEND OF SYMBOLS	
17+00 (NEW), 17+00 (OLD)	CHANNEL STATIONING
○ 417	CHANNEL CORNER
⊙ H.L.F.	HARBOR LINE CORNER
---	FEDERAL CHANNEL
---	HARBOR LINE
---	SUBMARINE CABLE
⊕	CAN BUOY
⊖	NUN BUOY
⊙	LIGHTED BUOY
⊙	FIXED LIGHT
⊙	LIGHT HOUSE
W	LIGHT COLOR WHITE
R	LIGHT COLOR RED
G	LIGHT COLOR GREEN
FL	FLASHING LIGHT
F	FIXED LIGHT
Oc	OCCULTING LIGHT
Iso	EQUAL INTERVAL
AL	ALTERNATING
Q	QUICK (FLASHING)
S	LIGHT CYCLE SECONDS

SITE SPECIFIC NOTES:

1. PROJECT DEPTHS AND SOUNDINGS ARE REFERRED TO LOW WATER DATUM OF 243.3 FEET IGLD 1985.
2. HORIZONTAL CONTROL IS REFERRED TO NORTH AMERICAN DATUM 1983/2011 NEW YORK STATE PLANE COORDINATE SYSTEM-CENTRAL ZONE.
3. PROJECT DEPTH IS AS NOTED BELOW LOW WATER DATUM.
4. SOUNDINGS WERE TAKEN BY THE BUFFALO DISTRICT ARMY CORPS OF ENGINEERS BY D. DELL AND PARTY ON SEPTEMBER 22, 2021 USING:
GPS POSITIONING, POS-MV VER. 5 AND RTK TIDES
SONAR HEAD: 200 KHZ, R2 SONIC 2024 MULTIBEAM
1.0 DEGREE BEAMS 150 DEGREE ARC
HEAVE PITCH AND ROLL; APPLANIX POS-MV VER. 5
VELOCITY PROFILER; SONTEK CASTAWAY CTD
HYPACK SURVEY SOFTWARE
SURVEY VESSEL "MONSON"
5. THE SOUNDING INFORMATION DEPICTED ON THE MAP REPRESENTS THE RESULTS OF SURVEYS MADE ON THE DATE INDICATED AND CAN ONLY BE CONSIDERED AS INDICATING THE GENERAL CONDITION AT THAT TIME.
6. THIS SURVEY WAS PREPARED IN ACCORDANCE WITH THE STANDARDS OUTLINED IN CORPS OF ENGINEERS HYDROGRAPHIC SURVEY MANUAL EM 1110-2-1003.

CHANNEL CORNER COORDINATES		
POINTS	NORTHING	EASTING
1	1505636.67	884402.53
2	1505337.84	884376.02
3	1505547.46	885408.26
4	1505261.77	885233.68
5	1506426.25	885403.95
6	1505338.43	887205.08
7	1507041.99	889248.29
8	1505950.31	887980.74
10	1506139.49	888445.68
12	1506391.72	888616.81
14	1506269.67	888783.25
16	1506700.41	889373.90



Original sheet size = ANSI D

Drawn by: KPL
Checked by: ACK
Reviewed by: Roman H. Figler III PLS
Chief, Survey Section
Approved by: Adam W. Hamm
Chief, NY/PA Navigation and Maintenance Section
To download an electronic version of this map, print a web browser to <http://www.usace.army.mil/Library/MapandChart.aspx>

U.S. ARMY ENGINEER DISTRICT
CORPS OF ENGINEERS
BUFFALO, NEW YORK 14207-3199

CAPE VINCENT HARBOR, NY
PROJECT CONDITIONS SOUNDINGS 2021
SCALE: 1"=200'

Sheet reference number
VH-101
Sheet 1 of 1