

VICINITY MAP
NOT TO SCALE

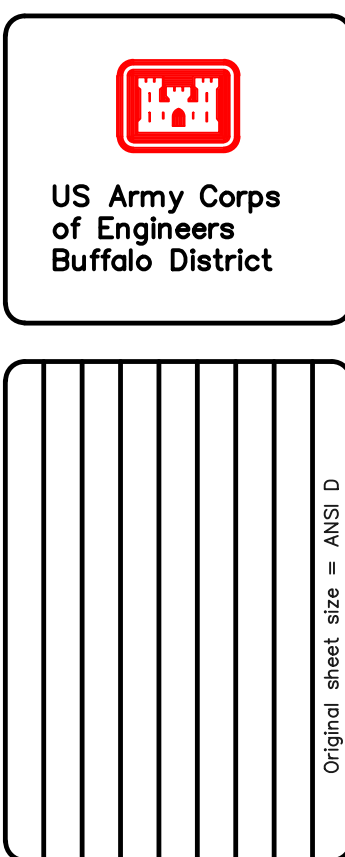
| SOUNDING COLOR LEGEND | |
|--------------------------------------|---|
| █ | DEPTHS 0.1' OR MORE ABOVE PROJECT DEPTH |
| █ | DEPTHS AT OR BELOW PROJECT DEPTH |
| 18.0 | PROJECT DEPTH |

| LEGEND OF SYMBOLS | |
|--------------------------|---------------------|
| 17+00 (NEW), 17+00 (OLD) | CHANNEL STATIONING |
| ○ 417 | CHANNEL CORNER |
| ⊙ H.L.F. | HARBOR LINE CORNER |
| --- | FEDERAL CHANNEL |
| --- | HARBOR LINE |
| --- | SUBMARINE CABLE |
| ⊙ | CAN BUOY |
| ⊙ | NUN BUOY |
| ⊙ | LIGHTED BUOY |
| ⊙ | FIXED LIGHT |
| ⊙ | LIGHT HOUSE |
| W | LIGHT COLOR WHITE |
| R | LIGHT COLOR RED |
| G | LIGHT COLOR GREEN |
| FL | FLASHING LIGHT |
| F | FIXED LIGHT |
| Oc | OCCULTING LIGHT |
| Iso | EQUAL INTERVAL |
| AL | ALTERNATING |
| Q | QUICK (FLASHING) |
| S | LIGHT CYCLE SECONDS |

SITE SPECIFIC NOTES:

- PROJECT DEPTHS AND SOUNDINGS ARE REFERRED TO LOW WATER DATUM OF 569.2 FEET IGLD 1985.
- HORIZONTAL CONTROL IS REFERRED TO NORTH AMERICAN DATUM 1983 OHIO STATE PLANE COORDINATE SYSTEM-NORTH ZONE.
- PROJECT DEPTH IS AS NOTED BELOW LOW WATER DATUM.
- SOUNDINGS WERE TAKEN BY THE BUFFALO DISTRICT ARMY CORPS OF ENGINEERS BY C. STRONG AND PARTY ON SEPTEMBER 12, 2019 USING:
GPS POSITIONING, TRIMBLE R10 W/RTK TIDES
SONAR HEAD: 200 KHZ, ODOM MKIII SINGLE BEAM
HEAVE PITCH AND ROLL; NONE
VELOCITY PROFILER; SONTEK CASTAWAY
HYPACK SURVEY SOFTWARE
SURVEY LAUNCH "LOWE"
- THE SOUNDING INFORMATION DEPICTED ON THE MAP REPRESENTS THE RESULTS OF SURVEYS MADE ON THE DATE INDICATED AND CAN ONLY BE CONSIDERED AS INDICATING THE GENERAL CONDITION AT THAT TIME.
- THE TOPOGRAPHIC INFORMATION IS BASED ON AERIAL PHOTOGRAPHY ACQUIRED FROM 1998 THROUGH 2004.
- THIS SURVEY WAS PREPARED IN ACCORDANCE WITH THE STANDARDS OUTLINED IN CORPS OF ENGINEERS HYDROGRAPHIC SURVEY MANUAL EM 1110-2-1003.

| CHANNEL CORNERS COORDINATES | | |
|-----------------------------|-----------|------------|
| POINT | NORTHING | EASTING |
| 801 | 733425.22 | 1754420.31 |
| 803 | 733339.98 | 1754405.22 |
| 805 | 732744.63 | 1754299.80 |
| 807 | 732692.64 | 1754320.39 |
| 809 | 732620.68 | 1754305.21 |
| 811 | 732577.97 | 1754283.06 |
| 813 | 732520.27 | 1754253.19 |
| 815 | 732412.09 | 1754253.40 |
| 814 | 732412.28 | 1754353.39 |
| 812 | 732496.00 | 1754353.23 |
| 810 | 732560.98 | 1754353.11 |
| 808 | 732596.92 | 1754371.73 |
| 806 | 732698.81 | 1754393.24 |
| 804 | 732755.10 | 1754403.21 |
| 802 | 733282.92 | 1754496.68 |
| 800 | 733355.77 | 1754596.47 |



Drawn by: KPL
Checked by: ACK
Reviewed by: Roman H. Figler III PLS
Chief, Survey Section
Approved by: Adam W. Hamm, PE
Chief, NY/PA Navigation and Maintenance Section
To download an electronic version of this map, point a web browser to <http://www.usace.army.mil/Library/MapandChart.aspx>

U.S. ARMY ENGINEER DISTRICT
CORPS OF ENGINEERS
BUFFALO, NEW YORK 14207-3199

COOLEY CANAL, OH
PROJECT CONDITIONS SOUNDINGS 2019
SCALE: 1"=50'

Sheet reference number
VH-101
Sheet 1 of 1