

VICINITY MAP
"NOT TO SCALE"

SOUNDING COLOR LEGEND

DEPTHS 0.1' OR MORE ABOVE PROJECT DEPTH

DEPTHS AT OR BELOW PROJECT DEPTH

18.0 PROJECT DEPTH

LEGEND OF SYMBOLS

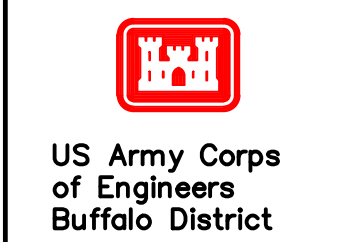
17+00 (NEW), 17+00 (OLD)	CHANNEL STATIONING
○ 417	CHANNEL CORNER
⊙ H.L.F.	HARBOR LINE CORNER
---	FEDERAL CHANNEL
---	HARBOR LINE
---	SUBMARINE CABLE
⊙	CAN BUOY
⊙	NUN BUOY
⊙	LIGHTED BUOY
⊙	FIXED LIGHT
⊙	LIGHT HOUSE
W	LIGHT COLOR WHITE
R	LIGHT COLOR RED
G	LIGHT COLOR GREEN
FL	FLASHING LIGHT
F	FIXED LIGHT
Oc	OCCULTING LIGHT
Iso	EQUAL INTERVAL
AL	ALTERNATING
Q	QUICK (FLASHING)
S	LIGHT CYCLE SECONDS

SITE SPECIFIC NOTES:

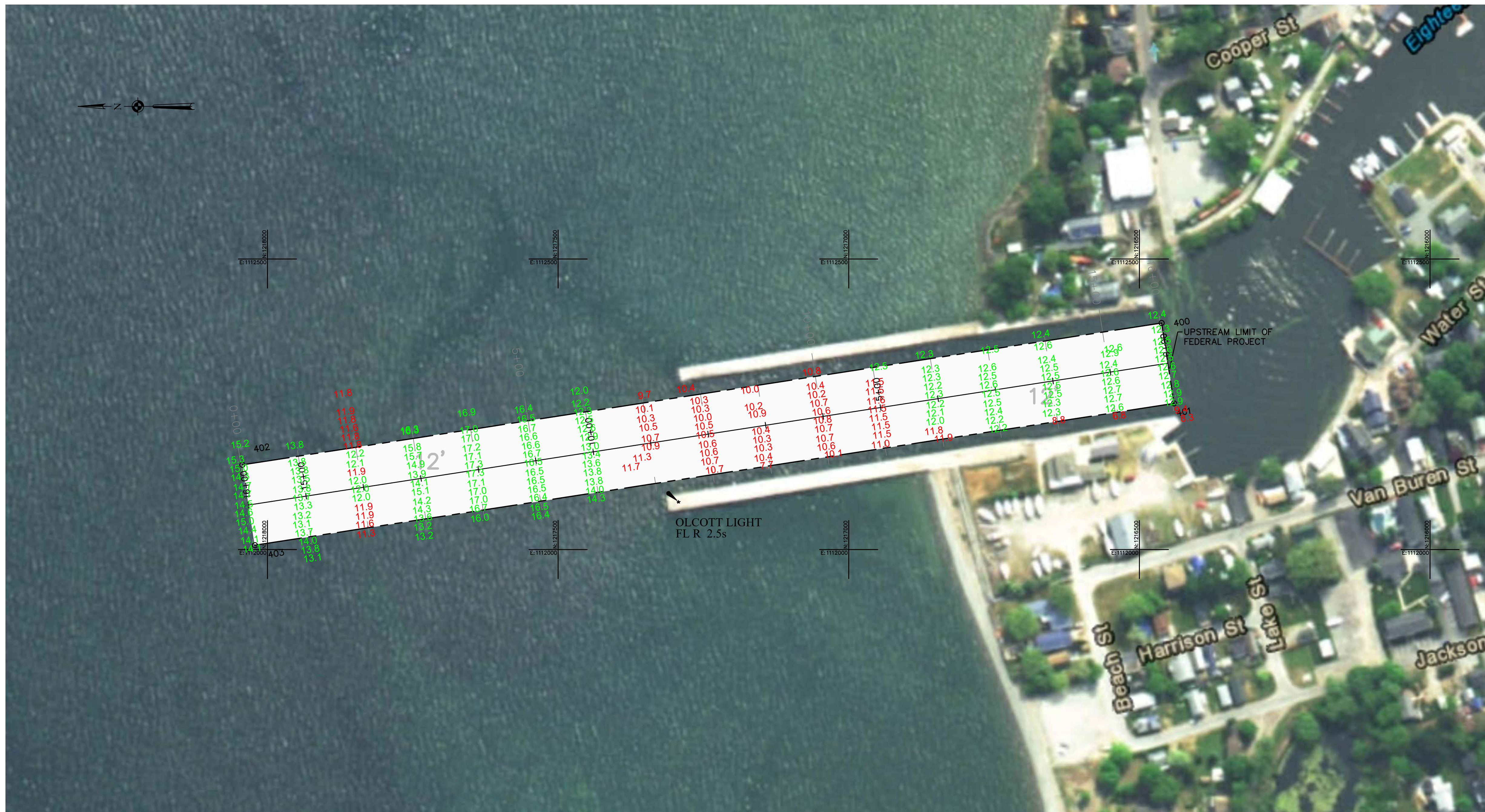
- PROJECT DEPTHS AND SOUNDINGS ARE REFERRED TO LOW WATER DATUM OF 243.3 FEET IGLD 1985.
- HORIZONTAL CONTROL IS REFERRED TO NORTH AMERICAN DATUM 1983/11 NEW YORK STATE PLANE COORDINATE SYSTEM—WEST ZONE.
- PROJECT DEPTH IS AS NOTED BELOW LOW WATER DATUM.
- SOUNDINGS WERE TAKEN BY THE BUFFALO DISTRICT ARMY CORPS OF ENGINEERS BY D. HENNEBERGER AND PARTY ON AUGUST 9, 2021 USING:
GPS POSITIONING: TRIMBLE R10 W/ RTK TIDES
SONAR HEAD: 200 KHZ, CEESCOPE SINGLEBEAM
HEAVE PITCH AND ROLL: N/A
VELOCITY PROFILER; SONTEK CASTAWAY
HYPACK SURVEY SOFTWARE
SURVEY LAUNCH "LOW"
- THE SOUNDING INFORMATION DEPICTED ON THE MAP REPRESENTS THE RESULTS OF SURVEYS MADE ON THE DATE INDICATED AND CAN ONLY BE CONSIDERED AS INDICATING THE GENERAL CONDITION AT THAT TIME.
- THIS SURVEY WAS PREPARED IN ACCORDANCE WITH THE STANDARDS OUTLINED IN CORPS OF ENGINEERS HYDROGRAPHIC SURVEY MANUAL EM 1110-2-1003.

CHANNEL CORNER COORDINATES

POINT	NORTHING	EASTING
400	1216461.72	1112389.89
401	1216440.37	1112251.53
402	1218043.04	1112145.90
403	1218021.69	1112007.53



Original sheet size = ANSI D



** COPY OF SIGNED ORIGINAL **

Drawn by: ACK
Checked by: KPL
Reviewed by: Roman H. Figler III PLS
Chief, Survey Section
Approved by: Adam W. Hamm, PE
Chief, NY/PA Navigation and Maintenance Section
To download an electronic version of this map, point a web browser to <http://www.usace.army.mil/Library/MapandChart.aspx>.

U.S. ARMY ENGINEER DISTRICT
CORPS OF ENGINEERS
BUFFALO, NEW YORK 14207-3199

OLCOTT HARBOR, NY
PROJECT CONDITIONS SOUNDINGS 2021
SCALE: 1"=100'

Sheet reference number
VH-101
Sheet 1 of 1