

SHEET INDEX  
NOT TO SCALE

SOUNDING COLOR LEGEND

- DEPTHS 0.1' OR MORE ABOVE PROJECT DEPTH
- DEPTHS AT OR BELOW PROJECT DEPTH

18.0 PROJECT DEPTH

LEGEND OF SYMBOLS

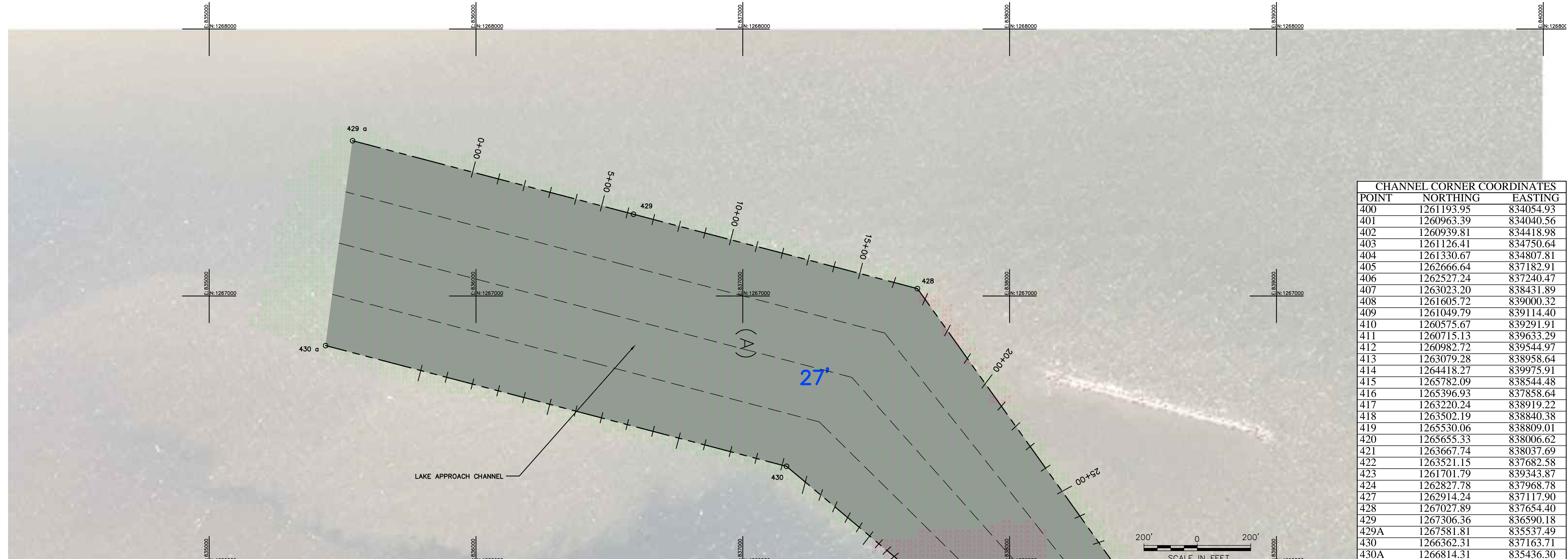
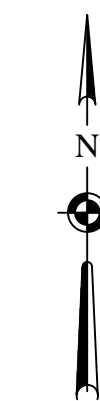
17+00	CHANNEL STATIONING
○ 417	CHANNEL CORNER
⊙ H.L.F.	HARBOR LINE CORNER
---	FEDERAL CHANNEL
---	HARBOR LINE
---	SUBMARINE CABLE
⊙ c	CAN BUOY
⊙ N	NUN BUOY
⊙	LIGHTED BUOY
⊙	FIXED LIGHT
⊙	LIGHT HOUSE
W	LIGHT COLOR WHITE
R	LIGHT COLOR RED
G	LIGHT COLOR GREEN
FL	FLASHING LIGHT
F	FIXED LIGHT
Oc	OCCULTING LIGHT
Iso	EQUAL INTERVAL
AL	ALTERNATING
Q	QUICK (FLASHING)
S	LIGHT CYCLE SECONDS

SITE SPECIFIC NOTES:

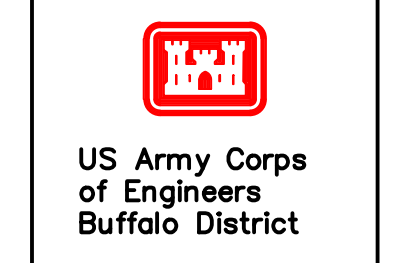
- PROJECT DEPTHS AND SOUNDINGS ARE REFERRED TO LOW WATER DATUM OF 243.3 FEET IGLD 1985.
- HORIZONTAL CONTROL IS REFERRED TO NORTH AMERICAN DATUM 1983 NEW YORK STATE PLANE COORDINATE SYSTEM-CENTRAL ZONE.
- PROJECT DEPTH IS AS NOTED BELOW LOW WATER DATUM.
- SOUNDINGS WERE TAKEN BY THE BUFFALO DISTRICT ARMY CORPS OF ENGINEERS BY D. DELL AND PARTY ON APRIL 28, 2014 THROUGH APRIL 29, 2014 USING:  
GPS POSITIONING, POS-MV VER.5  
CORRECTION USED: TRIMBLE RTK BASE AT CP"D"  
SONAR HEAD: 240 KHZ, SEABAT 7101 MULTIBEAM  
1.5 DEGREE BEAMS 210 DEGREE ARC  
HEAVE PITCH AND ROLL: APPLANIX POS-MV VER. 5  
VELOCITY PROFILER: SONTEK CASTAWAY CTD  
HYPACK SURVEY SOFTWARE  
SURVEY VESSEL "WITMER"
- THE SOUNDING INFORMATION DEPICTED ON THE MAP REPRESENTS THE RESULTS OF SURVEYS MADE ON THE DATE INDICATED AND CAN ONLY BE CONSIDERED AS INDICATING THE GENERAL CONDITION AT THAT TIME.
- THE BACKGROUND IMAGERY SHOWN WAS ACQUIRED FROM THE NEW YORK STATE GIS CLEARINGHOUSE.
- THIS SURVEY WAS PREPARED IN ACCORDANCE WITH THE STANDARDS OUTLINED IN CORPS OF ENGINEERS HYDROGRAPHIC SURVEY MANUAL EM 1110-2-1003.



VICINITY MAP  
NOT TO SCALE



CHANNEL CORNER COORDINATES		
POINT	NORTHING	EASTING
400	1261193.95	834054.93
401	1260963.39	834040.56
402	1260939.81	834418.98
403	1261126.41	834750.64
404	1261330.67	834807.81
405	1262666.64	837182.91
406	1262527.24	837240.47
407	1263023.20	838431.89
408	1261605.72	839000.32
409	1261049.79	839114.40
410	1260575.67	839291.91
411	1260715.13	839633.29
412	1260982.72	839544.97
413	1263079.28	838958.64
414	1264418.27	839975.91
415	1265782.09	838544.48
416	1265396.93	837858.64
417	1263220.24	838919.22
418	1263502.19	838840.38
419	1265530.06	838809.01
420	1265655.33	838006.62
421	1263667.74	838037.69
422	1263521.15	837682.58
423	1261701.79	839343.87
424	1262827.78	837968.78
427	1262914.24	837117.90
428	1267027.89	837654.40
429	1267306.36	836590.18
429A	1267581.81	835537.49
430	1266362.31	837163.71
430A	1266814.31	835436.30



Original sheet size = ANSI D

Drawn by: KPL  
Checked by: ACK  
Reviewed by: Roman H. Figler III PLS  
Chief, Survey Section  
Approved by: Edward F. Gowercki  
Date: May 5, 2014  
Chief, NY/PA Navigation and Maintenance Section  
http://www.usace.army.mil/Library/NavigationCharts.aspx

U.S. ARMY ENGINEER DISTRICT  
CORPS OF ENGINEERS  
BUFFALO, NEW YORK 14207-3199

OSWEGO HARBOR, NY  
PROJECT CONDITIONS SOUNDINGS 2014  
SCALE: 1" = 200'

Sheet reference number  
**VH-101**  
Sheet 1 of 3