

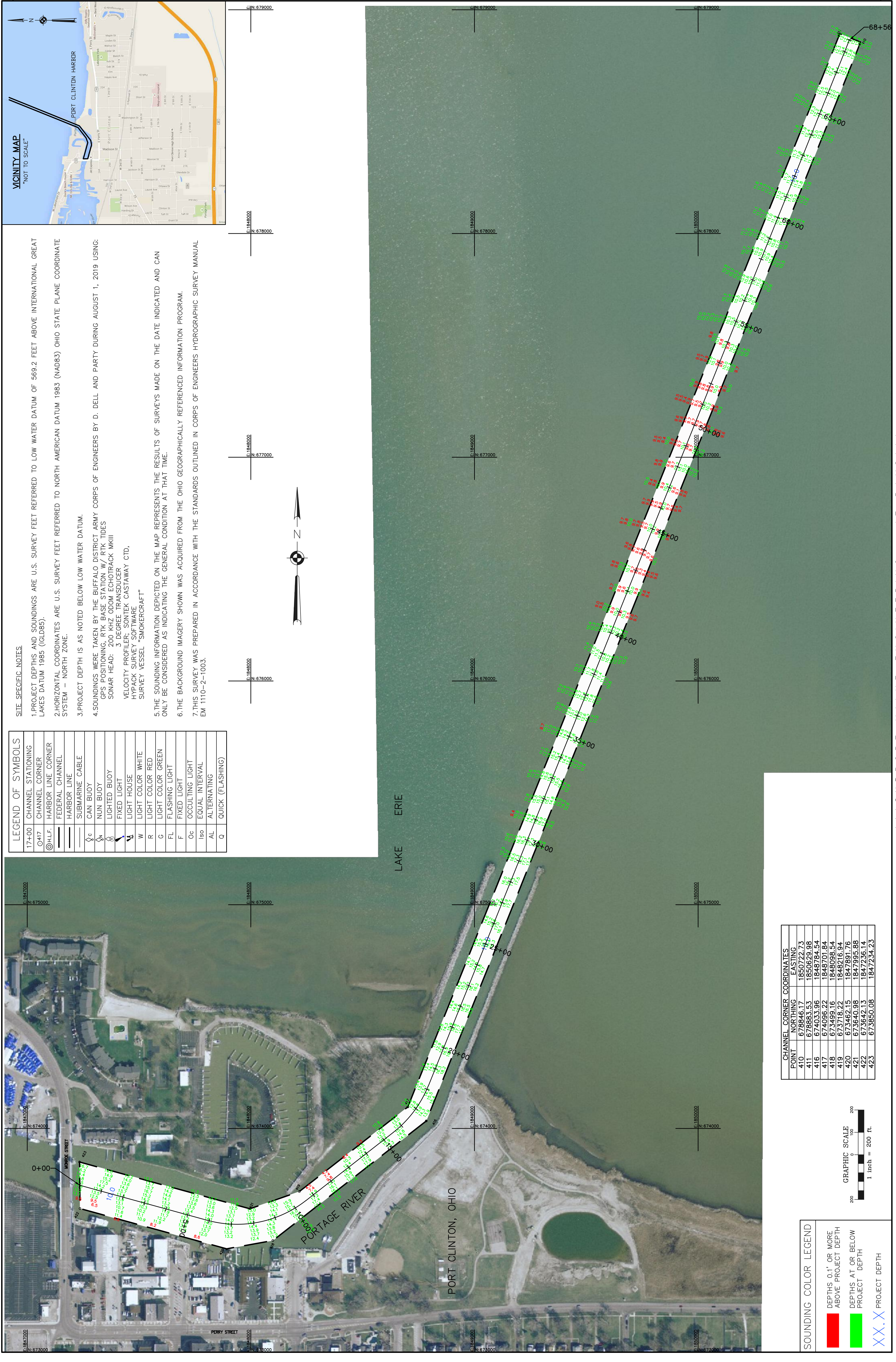
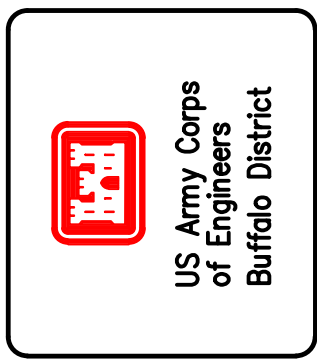
Sheet reference number
VH-101
Sheet 1 of 1

PORT CLINTON, OHIO
PROJECT CLINTON SOUNDINGS 2019
SCALE: 1" = 200'

U.S. ARMY ENGINEER DISTRICT
CORPS OF ENGINEERS
BUFFALO, NEW YORK 14207-3199

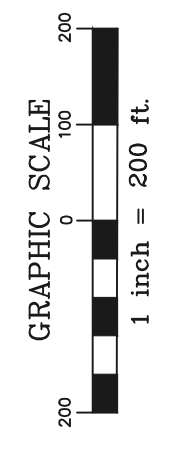
Drawn by: KFL
Checked by: ACK
Reviewed by: Roman H. Fieger III PLS
Chief, Survey Section
Approved: Adm. W. Hamm, PE
Chief, NY-PA O & M Office

Original sheet size = ANSI D



CHANNEL CORNER COORDINATES

POINT	NORTHING	EASTING
410	678846.17	1850722.73
411	678863.53	1850625.98
416	674033.96	1848784.54
417	674096.22	1848701.84
418	673499.16	1848098.54
419	673718.22	1848216.94
420	673462.15	1847891.76
421	673640.98	1847995.68
422	673642.13	1847236.14
423	673850.08	1847234.23



SOUNDING COLOR LEGEND

DEPTHS 0.1' OR MORE ABOVE PROJECT DEPTH	Red
DEPTHS AT OR BELOW PROJECT DEPTH	Green
PROJECT DEPTH	Blue X

LEGEND OF SYMBOLS

17+00	CHANNEL STATIONING
⊙417	CHANNEL CORNER
⊙H.L.F.	HARBOR LINE CORNER
—	FEDERAL CHANNEL
—	HARBOR LINE
—	SUBMARINE CABLE
⊙ c	CAN BUOY
⊙ n	NUN BUOY
⊙ l	LIGHTED BUOY
⊙ f	FIXED LIGHT
⊙ w	LIGHT HOUSE
W	LIGHT COLOR WHITE
R	LIGHT COLOR RED
G	LIGHT COLOR GREEN
FL	FLASHING LIGHT
F	FIXED LIGHT
Oc	OCCULTING LIGHT
Is	EQUAL INTERVAL
AL	ALTERNATING
O	QUICK (FLASHING)

- SITE SPECIFIC NOTES
- PROJECT DEPTHS AND SOUNDINGS ARE U.S. SURVEY FEET REFERRED TO LOW WATER DATUM OF 569.2 FEET ABOVE INTERNATIONAL GREAT LAKES DATUM 1985 (IGLD85).
 - HORIZONTAL COORDINATES ARE U.S. SURVEY FEET REFERRED TO NORTH AMERICAN DATUM 1983 (NAD83) OHIO STATE PLANE COORDINATE SYSTEM - NORTH ZONE.
 - PROJECT DEPTH IS AS NOTED BELOW LOW WATER DATUM.
 - SOUNDINGS WERE TAKEN BY THE BUFFALO DISTRICT ARMY CORPS OF ENGINEERS BY D. DELL AND PARTY DURING AUGUST 1, 2019 USING:
GPS POSITIONING: RTK BASE STATION W/ RTK TIDES
SONAR HEAD: 200 KHZ ODOM ECHOTRACK MKIII
VELOCITY PROFILER: SONTEK CASTAWAY CTD,
HYPACK SURVEY SOFTWARE
SURVEY VESSEL "SMOKERCRAFT"
 - THE SOUNDING INFORMATION DEFINED ON THE MAP REPRESENTS THE RESULTS OF SURVEYS MADE ON THE DATE INDICATED AND CAN ONLY BE CONSIDERED AS INDICATING THE GENERAL CONDITION AT THAT TIME.
 - THE BACKGROUND IMAGERY SHOWN WAS ACQUIRED FROM THE OHIO GEOGRAPHICALLY REFERENCED INFORMATION PROGRAM.
 - THIS SURVEY WAS PREPARED IN ACCORDANCE WITH THE STANDARDS OUTLINED IN CORPS OF ENGINEERS HYDROGRAPHIC SURVEY MANUAL EM 11110-2-1003.

