

VICINITY MAP  
"NOT TO SCALE"

SOUNDING COLOR LEGEND

- DEPTHS 0.1' OR MORE ABOVE PROJECT DEPTH
- DEPTHS AT OR BELOW PROJECT DEPTH
- PROJECT DEPTH

LEGEND OF SYMBOLS

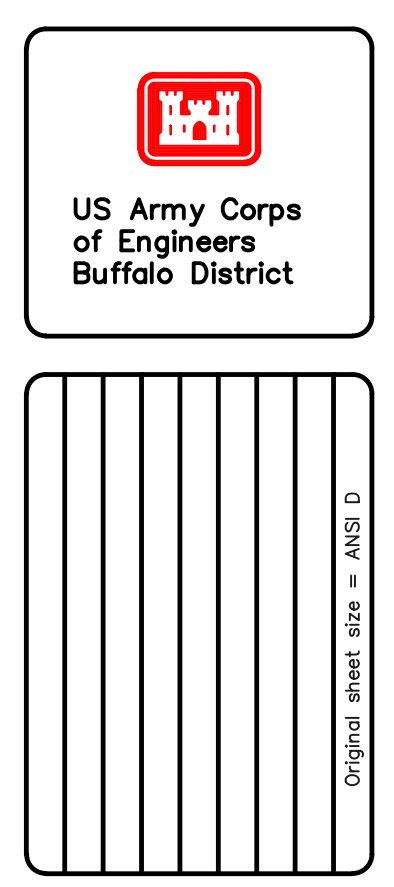
17+00 (NEW), 17+00 (OLD)	
○ 417	CHANNEL CORNER
⊙ H.L.F.	HARBOR LINE CORNER
---	FEDERAL CHANNEL
---	HARBOR LINE
---	SUBMARINE CABLE
⊙	CAN BUOY
⊙	NUN BUOY
⊙	LIGHTED BUOY
⊙	FIXED LIGHT
⊙	LIGHT HOUSE
W	LIGHT COLOR WHITE
R	LIGHT COLOR RED
G	LIGHT COLOR GREEN
FL	FLASHING LIGHT
F	FIXED LIGHT
Oc	OCCULTING LIGHT
Iso	EQUAL INTERVAL
AL	ALTERNATING
Q	QUICK (FLASHING)
S	LIGHT CYCLE SECONDS

SITE SPECIFIC NOTES:

- PROJECT DEPTHS AND SOUNDINGS ARE REFERRED TO LOW WATER DATUM OF 569.2 FEET IGLD 1985.
- HORIZONTAL CONTROL IS REFERRED TO NORTH AMERICAN DATUM 1983 (2011 ADJUSTMENT) OHIO STATE PLANE COORDINATE SYSTEM-NORTH ZONE.
- PROJECT DEPTH IS AS NOTED BELOW LOW WATER DATUM.
- SOUNDINGS SHOWN REPRESENT THE SHOALEST SOUNDING SORTED FROM FULL MULTIBEAM COVERAGE USING A 50'X25' HYPACK MATRIX.
- SOUNDINGS WERE TAKEN BY THE BUFFALO DISTRICT ARMY CORPS OF ENGINEERS BY D. BANNING AND PARTY ON JUNE 16, 2021:  
GPS BASE STATION W/RTK TIDES  
SONAR HEAD: 200 KHZ, R2 SONIC 2024 MULTIBEAM  
1.5 DEGREE BEAMS 160 DEGREE ARC  
HEAVE PITCH AND ROLL: APPLANIX POS-MV VER. 5  
VELOCITY PROFILE: SONTEK CASTAWAY  
HYPACK SURVEY SOFTWARE  
SURVEY LAUNCH "WITMER"
- THE SOUNDING INFORMATION DEPICTED ON THE MAP REPRESENTS THE RESULTS OF SURVEYS MADE ON THE DATE INDICATED AND CAN ONLY BE CONSIDERED AS INDICATING THE GENERAL CONDITION AT THAT TIME.
- THIS SURVEY WAS PREPARED IN ACCORDANCE WITH THE STANDARDS OUTLINED IN CORPS OF ENGINEERS HYDROGRAPHIC SURVEY MANUAL EM 1110-2-1003.

CHANNEL CORNERS COORDINATES

POINT	NORTHING	EASTING
410	678846.17	1850722.73
412	676991.03	1849975.41
414	675135.89	1849228.12
416	674033.96	1848784.54
418	673499.16	1848098.54
420	673482.15	1847891.76
422	673642.13	1847236.14
423	673850.08	1847234.23
421	673640.98	1847995.88
419	673718.22	1848216.94
417	674096.22	1848701.84
415	675173.25	1849135.37
413	677028.39	1849882.66
411	678883.53	1850629.98



Drawn by: KPL  
Checked by: ACK  
Reviewed by: Roman H. Figler III, PLS  
Chief, Survey Section  
Approved by: Adam W. Hamm  
Date: June 22, 2021  
Chief, NY/PA Navigation and Maintenance Section  
Date: June 22, 2021  
To download an electronic version of this map, point to a web browser to <http://www.usace.army.mil/Library/MapandChart.aspx>

U.S. ARMY ENGINEER DISTRICT  
CORPS OF ENGINEERS  
BUFFALO, NEW YORK 14207-3199

HARBOR NAME, STATE  
PROJECT DESCRIPTION  
PROJECT CONDITIONS SOUNDINGS 2021  
SCALE: 1"=200'

Sheet reference number  
VH-101  
Sheet 1 of 1