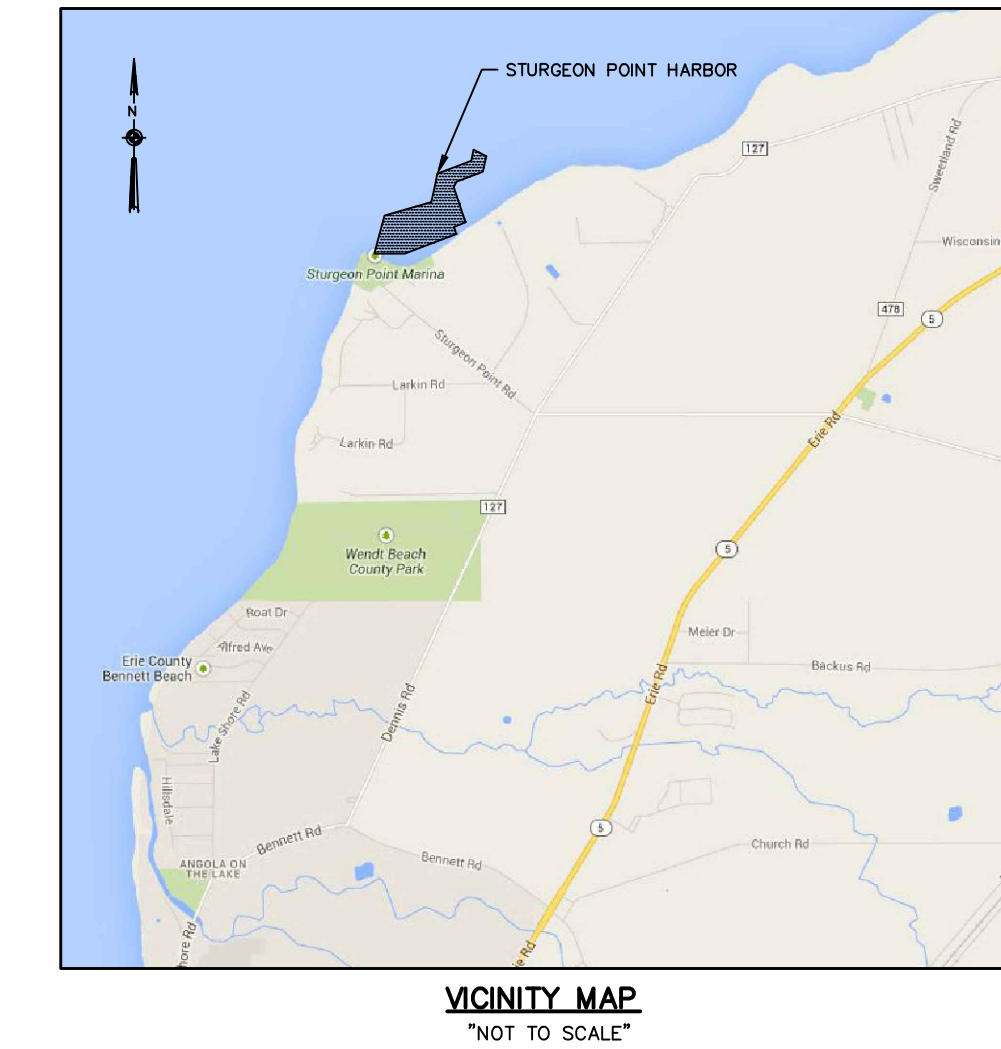


SITE SPECIFIC NOTES:

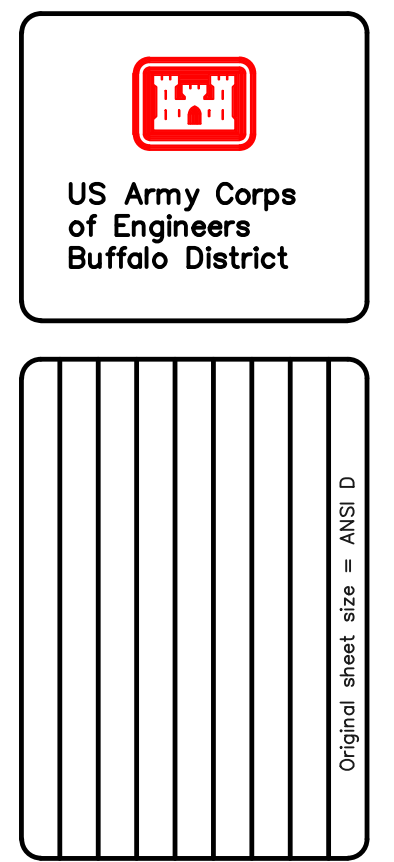
- PROJECT DEPTHS AND SOUNDINGS ARE REFERRED TO LOW WATER DATUM OF 569.2 FEET IGLD 1985.
- HORIZONTAL CONTROL IS REFERRED TO NORTH AMERICAN DATUM 1983 NEW YORK STATE PLANE COORDINATE SYSTEM-WEST ZONE.
- PROJECT DEPTH IS AS NOTED BELOW LOW WATER DATUM.
- SOUNDINGS WERE TAKEN BY THE BUFFALO DISTRICT ARMY CORPS OF ENGINEERS BY D. DELL AND PARTY ON JUNE 29, 2016 USING:
GPS POSITIONING, TRIMBLE R-6 WITH RTK TIDES
SONAR HEAD: 200 KHZ, ODOM MKIII
VELOCITY PROFILER; SONTEK CASTAWAY
HYPACK SURVEY SOFTWARE
SURVEY LAUNCH "JETBOAT19"
- THE SOUNDING INFORMATION DEPICTED ON THE MAP REPRESENTS THE RESULTS OF SURVEYS MADE ON THE DATE INDICATED AND CAN ONLY BE CONSIDERED AS INDICATING THE GENERAL CONDITION AT THAT TIME.
- THE BACKGROUND IMAGERY SHOWN WAS ACQUIRED FROM THE NEW YORK STATE GIS CLEARINGHOUSE.
- THIS SURVEY WAS PREPARED IN ACCORDANCE WITH THE STANDARDS OUTLINED IN CORPS OF ENGINEERS HYDROGRAPHIC SURVEY MANUAL EM 1110-2-1003.

SOUNDING COLOR LEGEND	
	DEPTHS 0.1' OR MORE ABOVE PROJECT DEPTH
	DEPTHS AT OR BELOW PROJECT DEPTH
18.0	PROJECT DEPTH



CHANNEL CORNERS COORDINATES		
POINT	NORTHING	EASTING
201	981532.49	1024179.92
203	981465.04	1024166.68
205	981389.50	1023964.03
207	981295.92	1023943.85
209	981219.03	1023926.49
211	981138.73	1023647.49
213	981012.54	1023613.69
218	980910.63	1023586.39
216	980911.16	1023768.93
214	981027.58	1024077.10
212	981068.97	1024063.78
210	981098.65	1024132.14
208	981171.10	1024107.09
206	981307.96	1024060.16
204	981341.08	1024079.12
202	981401.01	1024235.54
200	981492.66	1024256.63

LEGEND OF SYMBOLS	
17+00 (NEW), 17+00 (OLD)	CHANNEL STATIONING
o 417	CHANNEL CORNER
o H.L.F.	HARBOR LINE CORNER
---	FEDERAL CHANNEL
---	HARBOR LINE
---	SUBMARINE CABLE
o	CAN BUOY
o	NUN BUOY
o	LIGHTED BUOY
o	FIXED LIGHT
o	LIGHT HOUSE
W	LIGHT COLOR WHITE
R	LIGHT COLOR RED
G	LIGHT COLOR GREEN
FL	FLASHING LIGHT
F	FIXED LIGHT
Oc	OCCULTING LIGHT
Is	EQUAL INTERVAL
AL	ALTERNATING
Q	QUICK (FLASHING)
S	LIGHT CYCLE SECONDS



Drawn by: ACK	** COPY OF SIGNED ORIGINAL **
Checked by: KFL	
Reviewed by: Roman H. Figler III PLS	
Approved by: Edward F. Gawarecki	

U.S. ARMY ENGINEER DISTRICT
CORPS OF ENGINEERS
BUFFALO, NEW YORK 14207-3199

**STURGEON POINT MARINA
EVANS, NEW YORK**
PROJECT CONDITIONS SOUNDINGS 2016
SCALE: 1"=100'

Sheet reference number
VH-101
SHEET 1 of 1

To download an electronic version of this map, right a web browser to <http://www.fdu.usace.army.mil/brny/MapandCharts.aspx>