



SOUNDING COLOR LEGEND

- DEPTHS 0.1' OR MORE ABOVE PROJECT DEPTH
- DEPTHS AT OR BELOW PROJECT DEPTH
- PROJECT DEPTH

LEGEND OF SYMBOLS

17+00 (NEW), 17+00 (OLD)	CHANNEL STATIONING
o 417	CHANNEL CORNER
o H.L.F.	HARBOR LINE CORNER
---	FEDERAL CHANNEL
---	HARBOR LINE
---	SUBMARINE CABLE
	CAN BUOY
	NUN BUOY
	LIGHTED BUOY
	FIXED LIGHT
	LIGHT HOUSE
W	LIGHT COLOR WHITE
R	LIGHT COLOR RED
G	LIGHT COLOR GREEN
FL	FLASHING LIGHT
F	FIXED LIGHT
Oc	OCCULTING LIGHT
iso	EQUAL INTERVAL
AL	ALTERNATING
Q	QUICK (FLASHING)
S	LIGHT CYCLE SECONDS

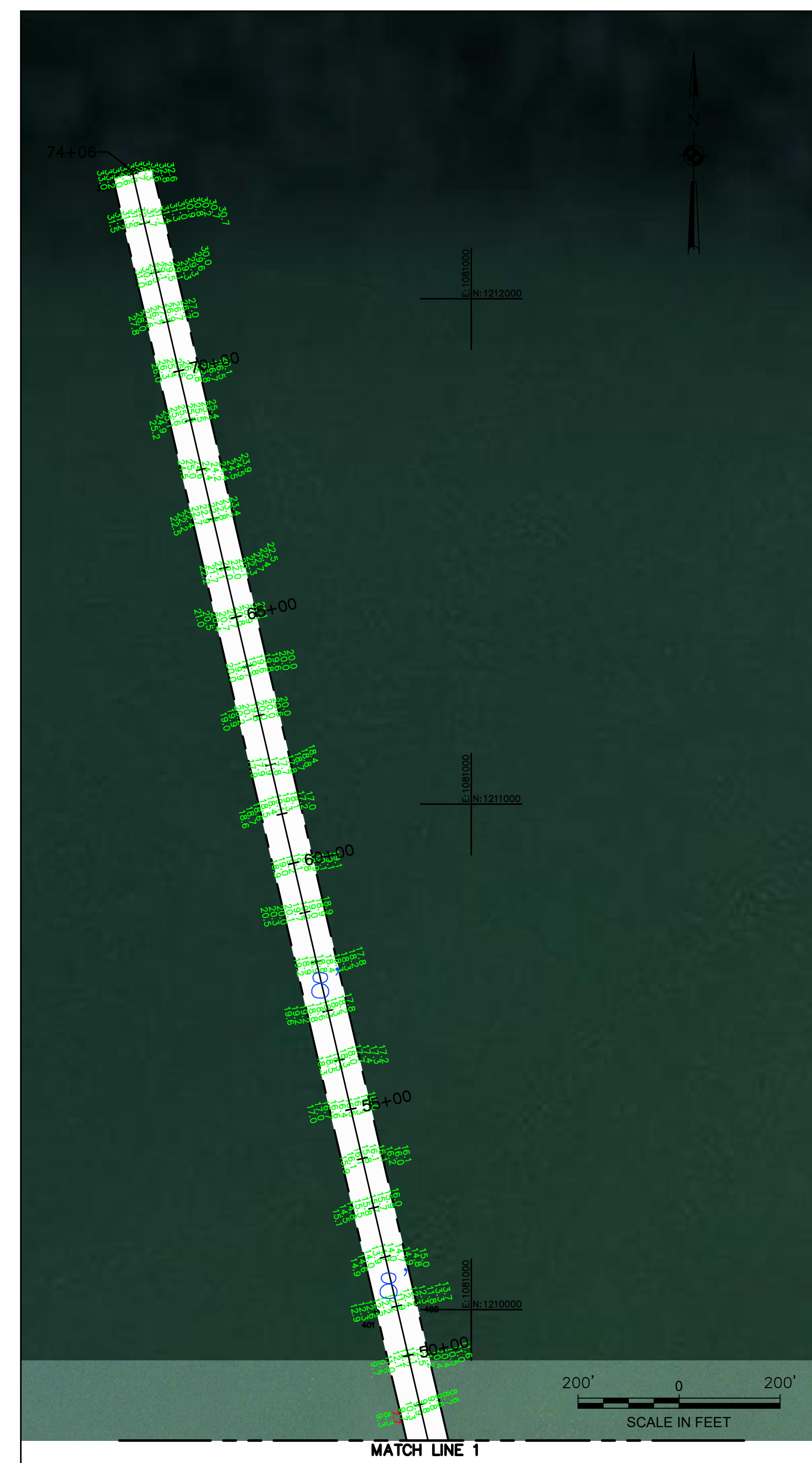
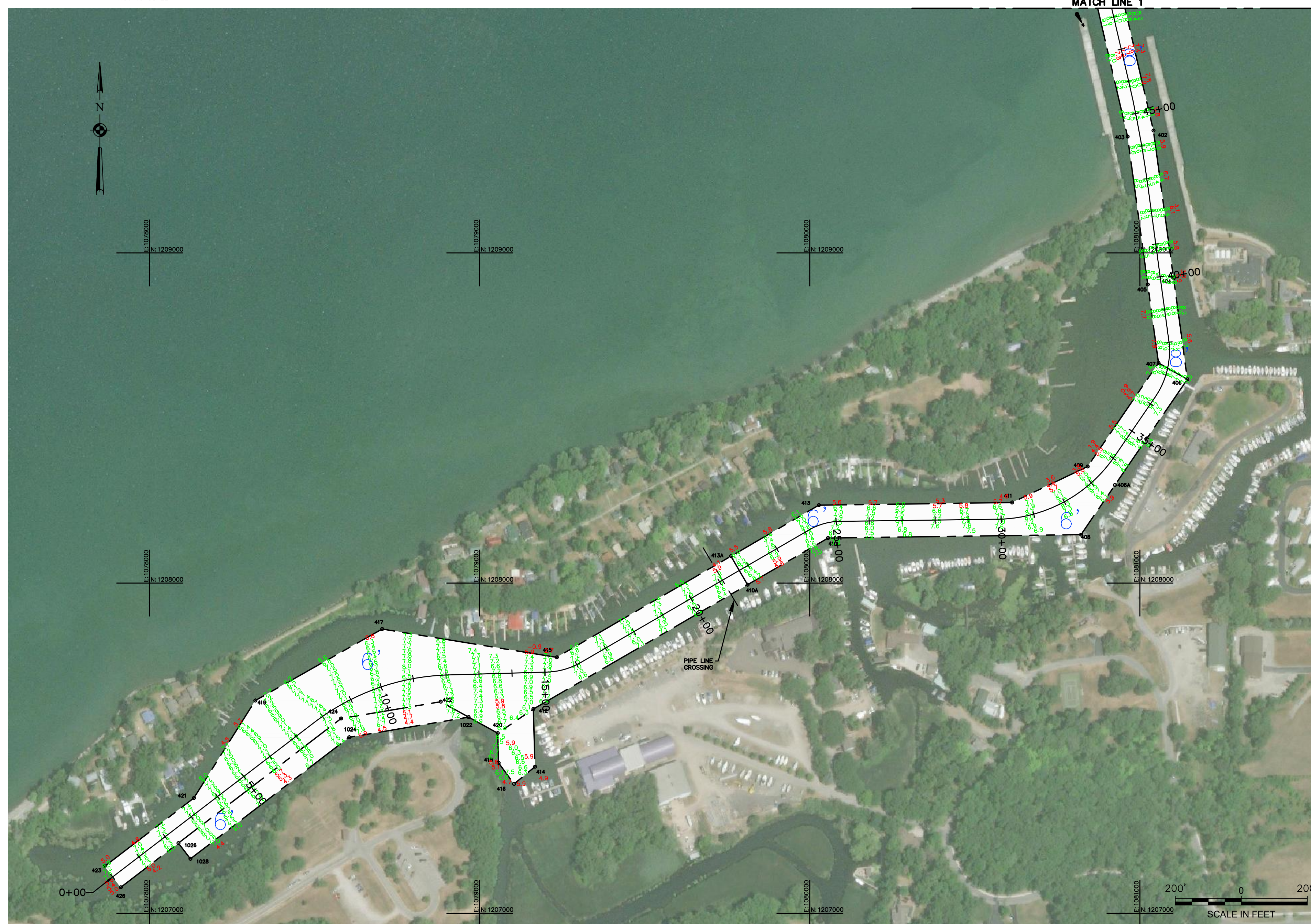
SITE SPECIFIC NOTES:

- PROJECT DEPTHS AND SOUNDINGS ARE REFERRED TO LOW WATER DATUM OF 243.3 FEET IGLD 1985.
- HORIZONTAL CONTROL IS REFERRED TO NORTH AMERICAN DATUM 1983 (2011 ADJUSTMENT) NEW YORK STATE PLANE COORDINATE SYSTEM--WEST ZONE.
- PROJECT DEPTH IS AS NOTED BELOW LOW WATER DATUM.
- SOUNDINGS WERE TAKEN BY THE BUFFALO DISTRICT ARMY CORPS OF ENGINEERS BY D. DELL AND PARTY ON JULY 8, 2020 USING:  
GPS POSITIONING: RTK BASE STATION  
SONAR HEAD: 200 KHZ, CEESCOPE  
3 DEGREE  
VELOCITY PROFILER: SONTEK CASTAWAY  
HYPACK SURVEY SOFTWARE  
SURVEY LAUNCH: SMOKERCRAFT
- THE SOUNDING INFORMATION DEPICTED ON THE MAP REPRESENTS THE RESULTS OF SURVEYS MADE ON THE DATE INDICATED AND CAN ONLY BE CONSIDERED AS INDICATING THE GENERAL CONDITION AT THAT TIME.
- THIS SURVEY WAS PREPARED IN ACCORDANCE WITH THE STANDARDS OUTLINED IN CORPS OF ENGINEERS HYDROGRAPHIC SURVEY MANUAL EM 1110-2-1003.

POINT	NORTHING	EASTING
399	1212243.75	1080289.53
398	1212262.00	1080367.80
400	1210012.77	1080891.31
402	1209370.49	1081040.81
404	1208922.63	1081101.95
406	1208617.39	1081143.63
406A	1208296.49	1080924.03
408	1208146.59	1080821.45
410	1208136.26	1080054.95
410A	1207994.78	1079811.18
412	1207618.23	1079162.34
414	1207443.62	1079167.39
416	1207391.48	1079103.85
418	1207455.12	1079056.97
420	1207345.11	1079034.37
1022	1207593.91	1078966.04
422	1207640.51	1078881.68
1024	1207532.75	1078604.34

POINT	NORTHING	EASTING
424	1207589.45	1078579.66
1028	1207164.44	1078123.48
1026	1207212.08	1078086.98
426	1207078.28	1077912.28
423	1207141.81	1077863.62
421	1207348.61	1078133.62
419	1207644.03	1078320.04
417	1207860.61	1078704.20
415	1207775.02	1079233.25
413A	1208081.29	1079760.97
413	1208235.91	1080027.39
411	1208243.80	1080612.49
409	1208352.97	1080841.48
407	1208666.66	1081056.14
405	1208934.40	1081023.68
403	1209352.26	1080962.53
401	1209994.54	1080813.04

VICINITY MAP  
"NOT TO SCALE"



US Army Corps of Engineers Buffalo District

\*\* COPY OF SIGNED ORIGINAL \*\*

Drawn by:	KPL
Checked by:	ACK
Reviewed by:	Roman H. Figler III PLS Chief, Survey Section
Approved by:	Adam W. Hamn Chief, NY/PA Navigation and Maintenance Section

Date: April 8, 2020

To download an electronic version of this map, point a web browser to <http://www.usace.army.mil/Library/MapandChart.aspx>

U.S. ARMY ENGINEER DISTRICT  
CORPS OF ENGINEERS  
BUFFALO, NEW YORK 14207-3199

WILSON HARBOR, NY  
PROJECT CONDITIONS SOUNDINGS 2020  
SCALE: 1"=200'

Sheet reference number  
**VH-101**  
Sheet 1 of 1