



US Army Corps
of Engineers®
Buffalo District

FACT SHEET

March 2017

OGDENSBURG HARBOR - NY

Small Navigational Projects

Section 107 of the River and Harbor Act of 1960, as amended.
Construction General (Continuing Authorities Program)

Location

- Ogdensburg Harbor is located at the mouth of the Oswegatchie River in Ogdensburg, NY in St. Lawrence County.

Project Description

- Provides for improvements to navigation, including dredging of channels, widening of turning basins, and construction of navigation aids.
- Potential navigation improvements include deepening of Lower East Channel and Lower Basin.
- Cost-share for Design and Implementation is 65% Federal, 35%

non-Federal (25% during Construction, 10% over no more than 30 years after Construction).

Importance

- The Port of Ogdensburg is the only U.S. port on the St. Lawrence Seaway.

Consequence

- Without navigation improvements, the inadequate depth of the Lower East Channel and Lower Basin ship berthing will persist, which causes unnecessary congestion, increased handling costs, and lost business opportunities.

Project Phase	Est. Fed. Cost of Phase	Federal Funding through FY16	FY17 Requirement	FY17 Budget	FY18 Requirement	FY18 Budget
Feasibility ¹	\$500K	\$500K	\$0	\$0	\$0	\$0
Design & Implementation	\$3.16M	\$0	\$550K	\$50K	\$2.55M	TBD
Total	\$3.516M	\$500K	\$550K	\$50K	\$2.55M	TBD

(1) First \$100k is at 100% Federal expense.

Project Sponsor/Customer

- Ogdensburg Bridge and Port Authority Letter of Intent on March 20, 2009.

Congressional Interests

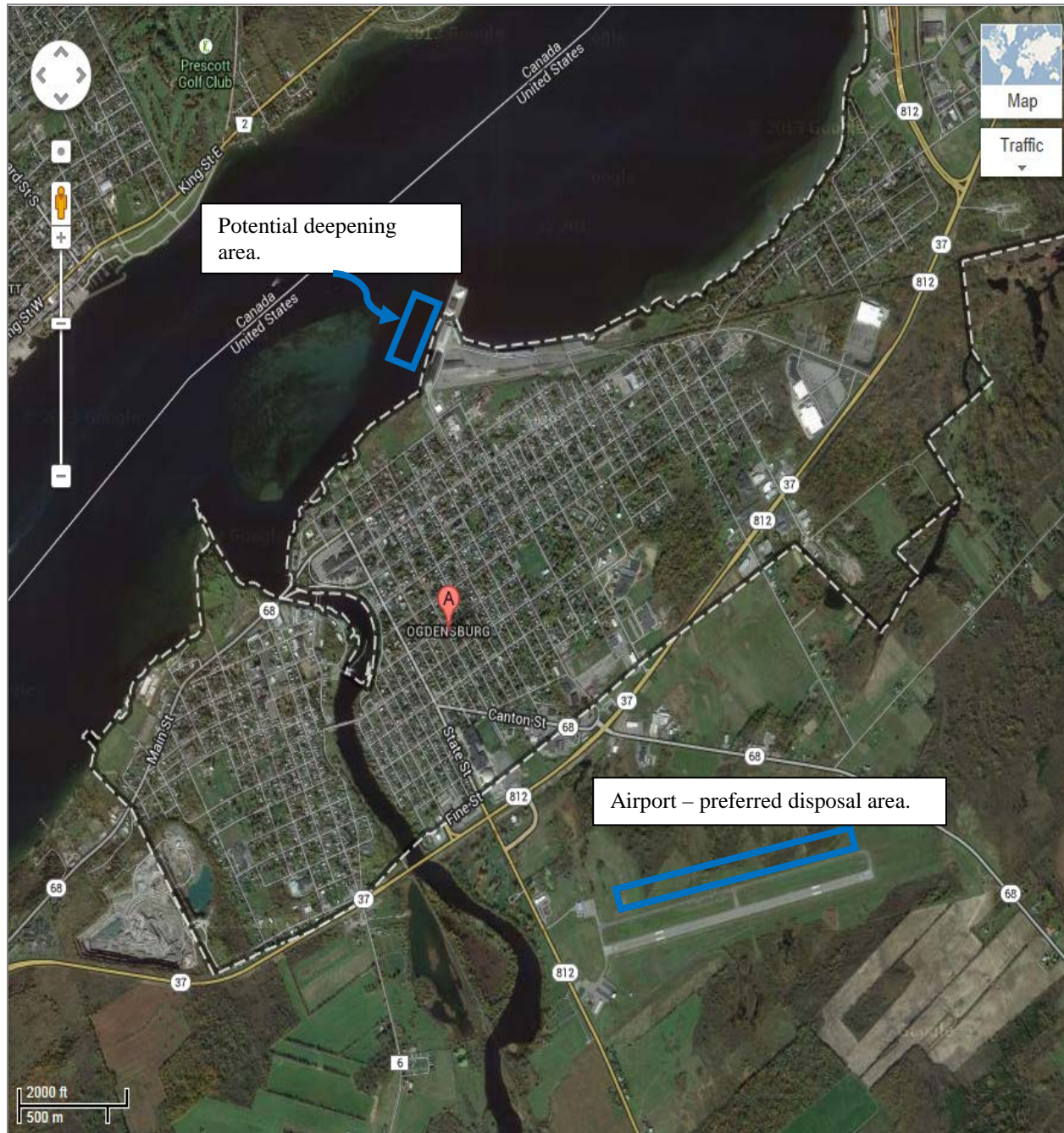
- Representative Elsie Stefanik R-NY-21
- Senator Kirsten Gillibrand D-NY
- Senator Charles Schumer D-NY

Current Status

- Detailed Project Report completed in November 2016.
- Project Partnership Agreement (PPA) is in development with approval to execute expected by April 2017.

Issues

- None



Project Manager: George Sunny (716) 879-4146, george.p.sunny@usace.army.mil