



US Army Corps
of Engineers ®



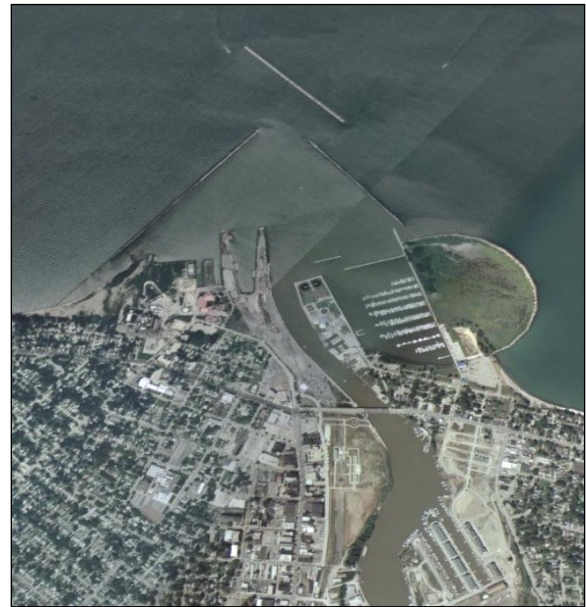
Lorain Harbor, OH

Harbor Features

- Located on Lake Erie in the City of Lorain, Lorain County, OH
- Authorization: Rivers & Harbor Acts of 1899, 1907, 1910, 1918, 1930, 1935, 1945, 1960, 1965, and the Water Resources Development Act of 1986
- Deep draft commercial harbor
- Project depths are 29 feet in the entrance channel, 28 feet in the outer harbor, 25 feet in the eastern and western outer harbor areas, 27 feet in the Black River Channel, 17 to 21 feet in the turning basins.
- 927K tons of material shipped and received in 2020
- Ranked 33rd among Great Lakes harbors and 150th among U.S. ports in 2020
- Interconnected with 9 commercial ports: ships to 1 port and receives from 8 ports
- Over 2.5 miles of breakwater structures
- 60-acre outer harbor and 2.6 miles of federal channel on the Black River
- A confined disposal facility (CDF) is located at the eastern end of the harbor.
- Major stakeholders: the Lorain Port Authority, private marinas, U.S. Coast Guard, American Metal Chemical Corp., Jonick Dock & Terminal, Republic Steel, IGR Henderson, and Terminal Ready Mix Inc.

Project Requirements

- The harbor requires dredging of approximately 75,000 cubic yards of material every year to maintain the navigation channel. The harbor was last dredged in 2022 when 80,000 cubic yards of material was removed. Dredging is planned in 2023.



- Sections of the west and outer breakwaters are deteriorating. Engineering and design is ongoing. Construction of repairs to the west breakwater are planned for 2024. Additional funds are needed for the construction of repairs to outer breakwater to ensure the harbor is adequately protected.
- Economic and environmental evaluation of dredged material placement alternatives and development of dredged material management plan for the harbor are ongoing to ensure placement capacity for future maintenance dredging.

Consequences of Not Maintaining the Project

- Light loading: loss of between 2 and 3 feet of channel depth will result in increased transportation costs of between \$118,000 and \$298,000 annually.
- Closing the harbor to commercial traffic will require commodities to be transported by rail and truck. This may increase annual emission rates by over 6,709 tons of harmful particulate matter (PM-10) and increase costs by an estimated \$1,502,000 due to increased railroad-related accidents and an estimated \$1,003,000 due to increased trucking-related accidents.

Transportation Importance

- Major receiving and shipping port on the Great Lakes and a critical harbor of refuge
- Major commodities shipped or received include limestone, salt, coal, petroleum coke, sand and gravel, and slag.
- Waterborne transportation facilitated by the harbor supports \$38.4M in business revenue, 169 direct, indirect, and induced jobs, and \$12.9M in labor income to the transportation sector.
- Commodities handled by the harbor support \$438.7M in business revenue, 2,388 direct, indirect, and induced jobs, and \$123.4M in labor income.

**U.S. Army Corps of Engineers Fiscal Year (FY) 2022, 2023, and 2024
Lorain Harbor, OH — Project Requirements and President’s Budget (\$1,000)**

Work Package	FY22 Requirement	FY22 Appropriation	FY23 Requirement	FY23 Appropriation	FY24 Requirement	FY24 President’s Budget
Maintenance Dredging – Primary Work Package	800	800	952	952	2,960	2,960
Additional State Requirements for Dredged Material Placement	1,259	1,259	1,418	0	0	0
Engineering, Design and Construction Outer Breakwater Repair	300	300	10,000	0	10,000	0
Environmental Compliance Management - Confined Disposal Facility Five Year External Assessment	0	0	6	6	0	0
Economic and Environmental Evaluation	150	150	0	0	0	0
Dredged Material Management Plan	150	150	200	0	0	0
Real Estate Management	8	8	8	8	8	8
Engineering, Design and Construction West Breakwater	250	250	15,000	14,894	250	250
TOTAL	2,917	2,917	27,584	15,860	13,218	3,218

Congressional Interests

- Representative Bob Latta, D-OH-5
- Senator Sherrod Brown D-OH
- Senator J. D. Vance R-OH