



US Army Corps
of Engineers®



Morristown Harbor, NY

Harbor Features

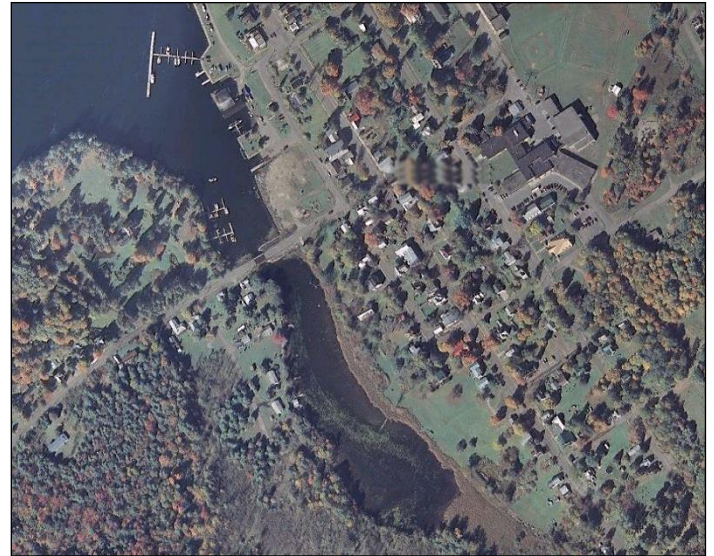
- Located on the St. Lawrence River in the Town of Morristown, St. Lawrence County, NY
- Authorization: River & Harbor Act of 1927
- Shallow draft recreational harbor
- Project depth is 9 feet in the entrance channel
- The harbor consists of an entrance channel 150 wide and approximately 800 feet long.
- Major stakeholders include fishing interests, private marinas, and the recreational boating community.

Project Requirements

- Currently, there are no critical maintenance requirements

Consequences of Not Maintaining the Project

- Potential safety issues for recreational boating community
- Potential functional loss of Harbor of Refuge
- Negative economic impacts, locally and regionally



Transportation Importance

- Provides safe access between Morristown Bay and the St. Lawrence River

**U.S. Army Corps of Engineers Fiscal Year (FY) 2017, 2018, and 2019
Morristown, NY — Project Requirements and President’s Budget (\$1,000)**

Work Package	FY17 Requirement	FY17 Appropriation	FY18 Requirement	FY18 Appropriation	FY19 Requirement	FY19 President’s Budget
TOTAL	0	0	0	0	0	0

Congressional Interests

- Representative Elise Stefanik R-NY-21
- Senator Charles Schumer D-NY
- Senator Kirsten Gillibrand D-NY