



US Army Corps
of Engineers®
Buffalo District

FACT SHEET

October 2019

OGDENSBURG HARBOR — OGDENSBURG, NEW YORK

Small Navigational Projects

Section 107 of the Rivers & Harbors Act of 1960, As Amended

Construction General (Continuing Authorities Program)

Location

- Ogdensburg Harbor is located at the mouth of the Oswegatchie River in Ogdensburg, New York, in St. Lawrence County.

Project Description

- Provides for improvements to navigation, including dredging of channels, widening of turning basins, and construction of navigation aids
- Potential navigation improvements include deepening of lower east channel and lower basin.
- Cost share for design and implementation is 65 percent federal, 35 percent nonfederal (25 percent during

construction, 10 percent over no more than 30 years after construction).

Importance

- The Port of Ogdensburg is the only U.S. port on the St. Lawrence Seaway.

Consequence

- Without navigation improvements, the inadequate depth of the lower east channel and lower basin ship berthing will persist, which causes unnecessary congestion, increased handling costs, and lost business opportunities.

Project Phase	Est. Fed. Cost of Phase	Federal Funding through FY18	FY19 Requirement	FY19 Budget	FY20 Requirement	FY20 Budget
Design & Implementation	\$4.1M	\$407K	\$3.587M	\$3.587M	\$0K	TBD

(1) First \$100k is at 100 percent federal expense.

Project Sponsor/Customer

- Ogdensburg Bridge and Port Authority letter of intent on March 20, 2009 and December 22, 2015.

Congressional Interests

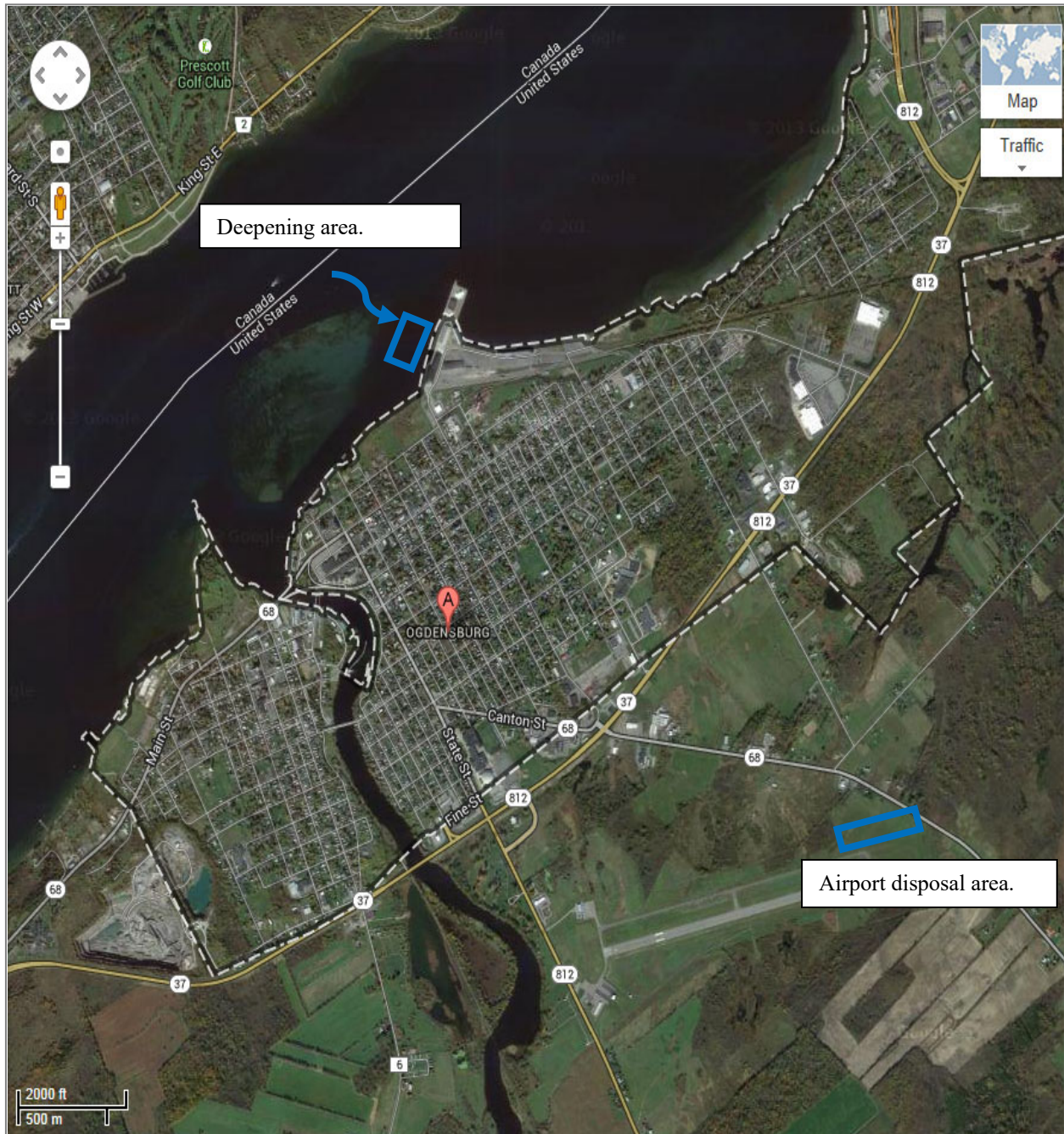
- Representative Elsie Stefanik R NY-21
- Senator Kirsten Gillibrand D NY
- Senator Charles Schumer D NY

Current Status

- The project completed the design phase in February 2019.
- Contract award and construction will proceed once the non-federal funding is received via a New York state grant approved in August 2019.

Issues

- None



Project Manager: Lex Barker (716) 879-4135, Lex.C.Barker@usace.army.mil