



**US Army Corps
of Engineers®**

Grasse River Mussel Bio-Substrate Design, Massena, NY

Project Location: The reach for this project is located on the lower seven miles of the Grasse River between in the Massena Power Canal and the St. Lawrence River in the Village of Massena, New York. The Grasse River is part of the St. Lawrence River at Massena/Akwesasne Area of Concern.

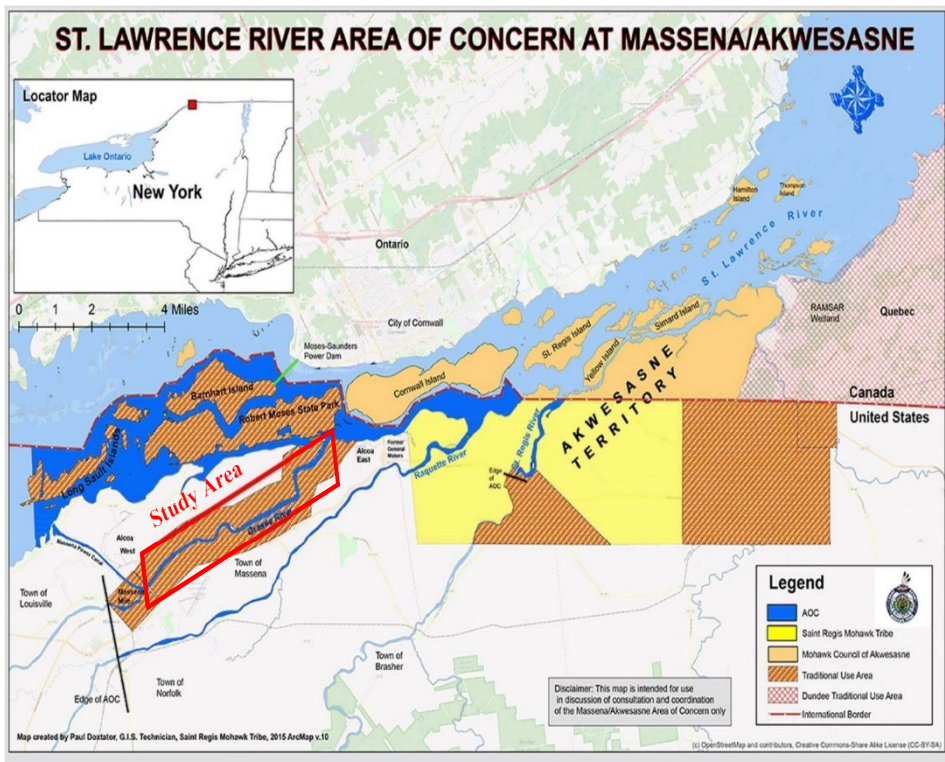
Description of Problem: A Superfund cleanup project (combination of dredging/backfilling and capping) to remove PCB contamination from a 7.2-mile stretch of the Grasse River (downstream of the Massena Power Canal) is currently underway. (This work is hereby referred to as the “Superfund project”.) However, the Superfund project does not include a plan to restore habitat for native freshwater mussels.



Proposed Project: This project is to design and identify the location of mussel habitat suitable to support the re-seeding and relocation of freshwater mussels taken from the river prior to the Superfund project’s commencement.

Partners and Collaboration: USEPA Great Lakes National Program Office, New York Department of Environmental Conservation, Saint Regis Mohawk Tribe, New York State Museum, National Oceanic and Atmospheric Association, and U.S. Geological Survey

Project Benefits: The project will provide the design for a bio-substrate to support the re-seeding from mussel propagation and relocation of native freshwater mussels from salvage in the lower seven miles of the river.



Project Status: Buffalo District received funding to support the completion of the design by June 2021. It's likely that a construction contract to implement the project will be awarded through the USEPA in late 2021 and will be overseen by the Buffalo District construction management team.

Estimated Construction Project Costs	
Federal	\$5,000,000

Project Milestones	
Design Completion	March 2021
Permits Complete	June 2021

Point of Contact
Ashley Binion-Zuccaro, Ashley.R.Binion-Zuccaro@usace.army.mil (419) 726-9121

