



US Army Corps  
of Engineers®  
Buffalo District

## FACT SHEET

March 2021

### OGDENSBURG HARBOR — OGDENSBURG, NEW YORK

#### Small Navigational Projects

Section 107 of the Rivers & Harbors Act of 1960, As Amended  
Construction General (Continuing Authorities Program)

#### Location

- Ogdensburg Harbor is located at the mouth of the Oswegatchie River in Ogdensburg, St. Lawrence County, New York.

#### Project Description

- Section 107 provides for improvements to navigation including dredging of channels, widening of turning basins, and construction of navigation aids
- Potential navigation improvements include deepening the lower east channel and lower basin.
- Cost share for design and implementation is 65 percent federal, 35

percent nonfederal (25 percent during construction, 10 percent over no more than 30 years after construction).

#### Importance

- The Port of Ogdensburg is the only U.S. port on the St. Lawrence Seaway.

#### Consequence

- Without navigation improvements, the inadequate depth of the lower east channel and lower basin ship berthing will persist, causing unnecessary congestion, increased handling costs, and lost business opportunities.

Project Phase	Est. Fed. Cost of Phase	Federal Funding through FY20	FY21 Requirement	FY21 Budget	FY22 Requirement	FY22 Budget
Design & Implementation	\$4.2M	\$4.0M	\$500k	\$0	\$0	TBD

#### Project Sponsor/Customer

- Ogdensburg Bridge and Port Authority
- Project Partnership Agreement signed March 31, 2017.

#### Congressional Interests

- Representative Elise Stefanik R NY-21
- Senator Kirsten Gillibrand D NY
- Senator Charles Schumer D NY

#### Current Status

- Sponsor received funding from New York State Department of Transportation in December 2020
- Complete design in March 2021
- Contract solicitation in April 2021
- Contract award in September 2021

#### Issues

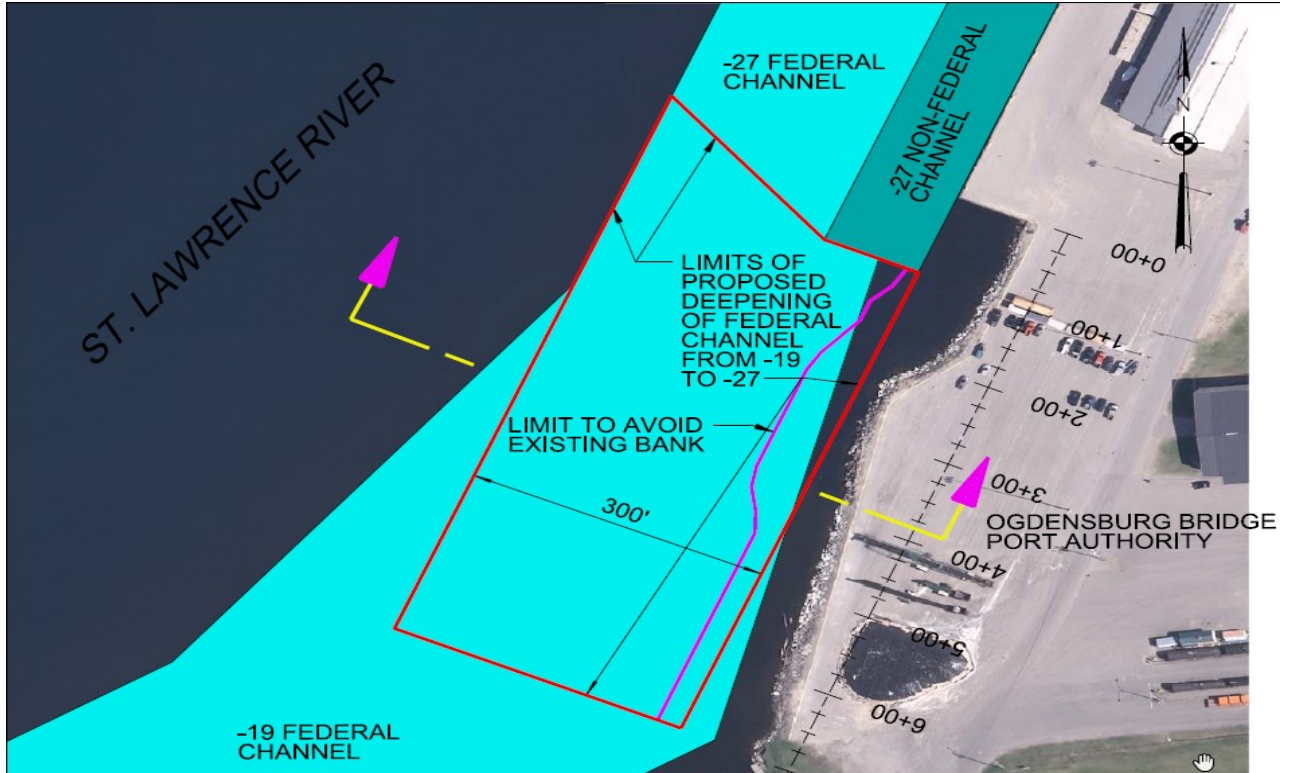
- Potential for bid prices higher than available funding; need for additional funding

Notes:

- 1) Yellow box is area to be deepened (currently 19 feet down to 27 feet).
- 2) Red line is the route from the port to the airport disposal site.
- 3) Larger view of the yellow box area on next page.







**Project Manager:** Lex Barker, PMP® (716) 879-4135, [Lex.C.Barker@usace.army.mil](mailto:Lex.C.Barker@usace.army.mil)